



MAILAM ENGINEERING COLLEGE

(Approved by AICTE, New Delhi, Affiliated to Anna University Chennai
& Accredited by TATA Consultancy Services TCS, Accredited by NBA, New Delhi)

DEPARTMENT OF COMPUTER SCIENCE AND ENGINEERING
Students Feedback Analysis report - Academic year:2021-2022

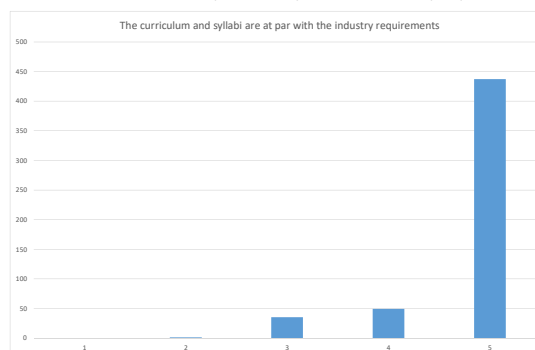
Date: 24.03.22

TOTAL FEEDBACK SUBMITTED

522

Questions	Number of students Marked-Poor	Number of students Marked-Fair	Number of students Marked-Good	Number of students Marked-Very Good	Number of students Marked - Excellent
The curriculum and syllabi are at par with the industry requirements.	0	1	35	49	437
The institution provides special training for slow learners and motivates the fast learners to excel in the	0	2	25	42	453
The institution motivates the students to learn beyond the curriculum through NPTEL, SWAYAM portal	0	4	17	39	462
The classrooms, laboratories, library are spacious, well maintained and fully equipped with appropriate	0	1	27	39	455
The faculty make use of ICT enabled tools like Google classroom, LMS, NPTEL lectures and LCD projectors for better teaching learning experience.	0	6	22	33	461
The institution provides the students capability and skill enhancement programs at regular intervals.	0	1	7	27	455
Common rooms for boys and girls are available with adequate facilities.	0	1	19	27	475
Quality of the teaching by the faculty members and support extended by them towards the overall development of the students.	0	0	19	24	479
The conduct of examinations and evaluation system (both internal and external exams) is effective	0	1	17	23	481
The quality of the food and hygiene maintenance in the hostel mess and canteen/cafeteria.	0	4	25	39	454

The curriculum and syllabi are at par with the industry requirements.



Dr. R. RAJAPPA, Ph.D.
Principal
Mailam Engineering College
Mailam - 605 004, Villupuram (TN)



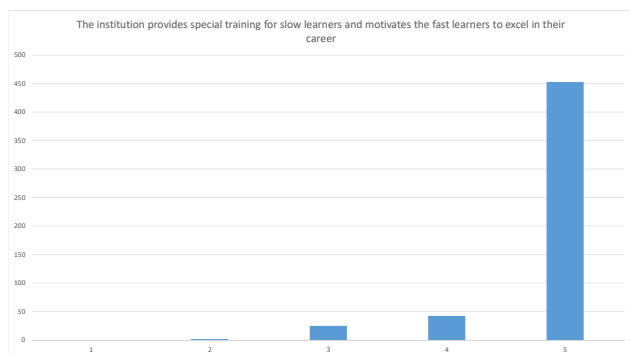
MAILAM ENGINEERING COLLEGE

(Approved by AICTE, New Delhi, Affiliated to Anna University Chennai
& Accredited by TATA Consultancy Services TCS, Accredited by NBA, New Delhi)

DEPARTMENT OF COMPUTER SCIENCE AND ENGINEERING
Students Feedback Analysis report - Academic year:2021-2022

Date: 24.03.22

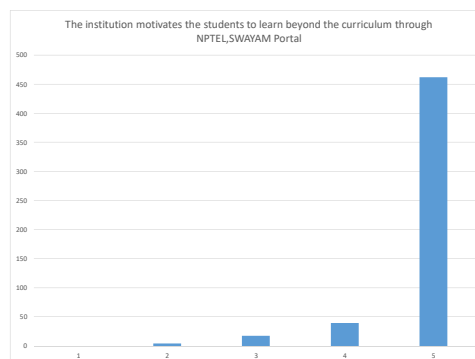
The institution provides special training for slow learners and motivates the fast learners to excel in their career.



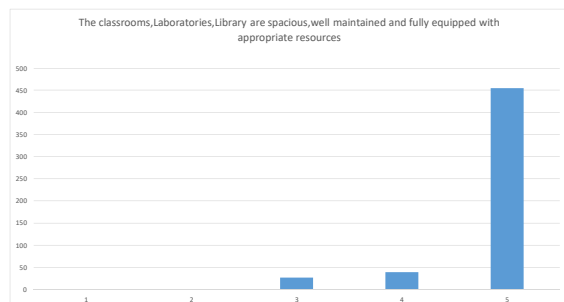
The institution motivates the students to learn beyond the curriculum

through

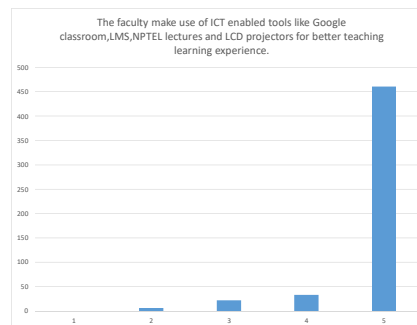
NPTEL, SWAYAM portal.



The classrooms, laboratories, library are spacious, well maintained and fully equipped with appropriate resources.



The faculty make use of ICT enabled tools like Google classroom, LMS, NPTEL lectures and LCD projectors for better teaching learning experience.

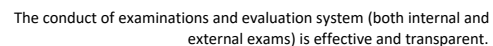
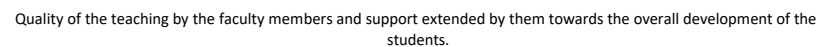
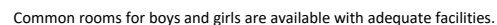


Dr. R. RAJAPPAN, P.R.
Principal
Mailam Engineering College
Mailam - 626 204, Villupuram (TN)



DEPARTMENT OF COMPUTER SCIENCE AND ENGINEERING
Students Feedback Analysis report - Academic year:2021-2022

The institution provides the students capability and skill enhancement programs at regular intervals.





MAILAM ENGINEERING COLLEGE

(Approved by AICTE, New Delhi, Affiliated to Anna University Chennai
& Accredited by TATA Consultancy Services TCS, Accredited by NBA, New Delhi)

DEPARTMENT OF COMPUTER SCIENCE AND ENGINEERING
Students Feedback Analysis report - Academic year:2021-2022

Date: 24.03.22

The quality of the food and hygiene maintenance in the hostel mess and canteen/cafeteria.



h
Dr. D. RAJAPPA, Ph.D.
Principal
Mailam Engineering College
Mailam - 626 104, Vellore (TN)

R. Rajan
HOD

h
PRINCIPAL



MAILAM ENGINEERING COLLEGE

(Approved by AICTE, New Delhi, Affiliated to Anna University Chennai
& Accredited by TATA Consultancy Services TCS, Accredited by NBA, New Delhi)

DEPARTMENT OF COMPUTER SCIENCE AND ENGINEERING
Students Feedback Analysis report - Academic year:2020-2021

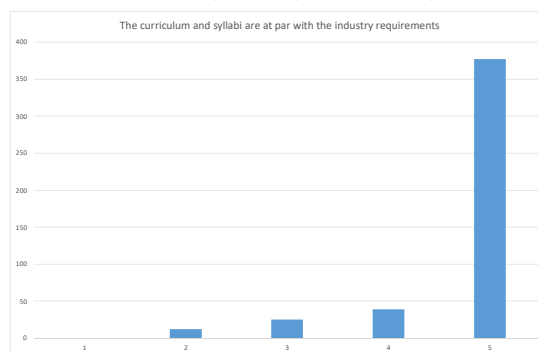
Date: 24.03.21

TOTAL FEEDBACK SUBMITTED

453

Questions	Number of students Marked-Poor	Number of students Marked-Fair	Number of students Marked-Good	Number of students Marked-Very Good	Number of students Marked - Excellent
The curriculum and syllabi are at par with the industry requirements.	0	12	25	39	377
The institution provides special training for slow learners and motivates the fast learners to excel in the	0	15	31	42	365
The institution motivates the students to learn beyond the curriculum through NPTEL, SWAYAM portal	0	12	25	31	385
The classrooms, laboratories, library are spacious, well maintained and fully equipped with appropriate	0	27	25	31	370
The faculty make use of ICT enabled tools like Google classroom, LMS, NPTEL lectures and LCD projectors for better teaching learning experience.	0	12	22	37	382
The institution provides the students capability and skill enhancement programs at regular intervals.	0	19	35	35	364
Common rooms for boys and girls are available with adequate facilities.	0	13	27	39	374
Quality of the teaching by the faculty members and support extended by them towards the overall development of the students.	0	1	27	35	390
The conduct of examinations and evaluation system (both internal and external exams) is effective	0	2	13	45	393
The quality of the food and hygiene maintenance in the hostel mess and canteen/cafeteria.	0	5	15	35	398

The curriculum and syllabi are at par with the industry requirements.




Dr. S. RAJAPPAN, Ph.D.
Principal
Mailam Engineering College
Mailam - 605 004, Villupuram (TN)



MAILAM ENGINEERING COLLEGE

(Approved by AICTE, New Delhi, Affiliated to Anna University Chennai
& Accredited by TATA Consultancy Services TCS, Accredited by NBA, New Delhi)

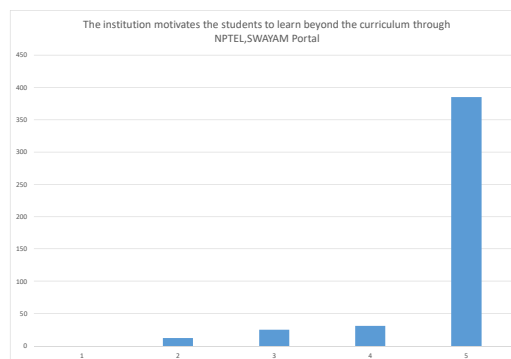
DEPARTMENT OF COMPUTER SCIENCE AND ENGINEERING
Students Feedback Analysis report - Academic year:2020-2021

Date: 24.03.21

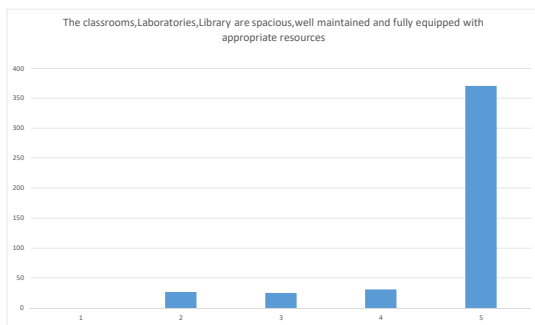
The institution provides special training for slow learners and motivates the fast learners to excel in their career.



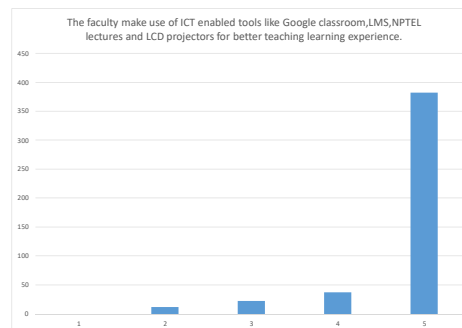
The institution motivates the students to learn beyond the curriculum NPTEL, SWAYAM portal.



The classrooms, laboratories, library are spacious, well maintained and fully equipped with appropriate resources.



The faculty make use of ICT enabled tools like Google classroom, LMS, NPTEL lectures and LCD projectors for better teaching learning experience.




D. R. RAJAPPA, P.E.
Principal
Mailam Engineering College
Mailam - 626 104, Viluppuram (TN)



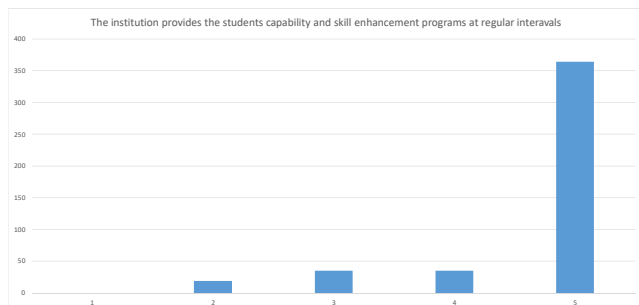
MAILAM ENGINEERING COLLEGE

(Approved by AICTE, New Delhi, Affiliated to Anna University Chennai
& Accredited by TATA Consultancy Services TCS, Accredited by NBA, New Delhi)

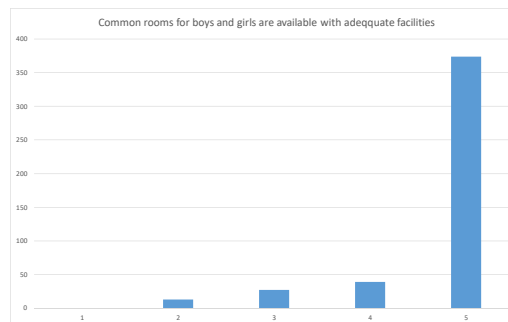
DEPARTMENT OF COMPUTER SCIENCE AND ENGINEERING
Students Feedback Analysis report - Academic year:2020-2021

Date: 24.03.21

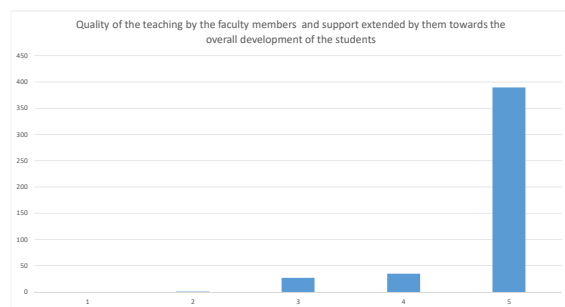
The institution provides the students capability and skill enhancement programs at regular intervals.



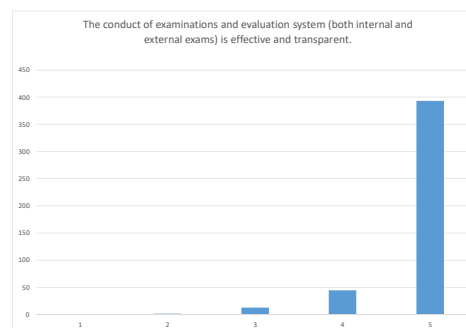
Common rooms for boys and girls are available with adequate facilities.



Quality of the teaching by the faculty members and support extended by them towards the overall development of the students.



The conduct of examinations and evaluation system (both internal and external exams) is effective and transparent.



Dr. S. RAJAPPA, Ph.D.
Principal
Mailam Engineering College
Mailam - 626 204, Virudhunagar (TN)



(Approved by AICTE, New Delhi, Affiliated to Anna University Chennai
& Accredited by TATA Consultancy Services TCS, Accredited by NBA, New Delhi)

DEPARTMENT OF COMPUTER SCIENCE AND ENGINEERING
Students Feedback Analysis report - Academic year:2020-2021

Date: 24.03.21

The quality of the food and hygiene maintenance in the hostel mess and canteen/cafeteria.




Dr. R. RAJAPPAN, Ph.D.
Principal
Maitan Engineering College
Maitan - 604 504, Vilupuram (Dt.)


HOD

PRINCIPAL



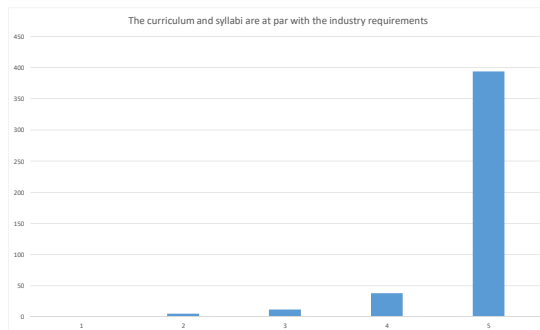
DEPARTMENT OF COMPUTER SCIENCE AND ENGINEERING
Students Feedback Analysis report - Academic year:2019-20

TOTAL FEEDBACK SUBMITTED

449

TOTAL FEEDBACK SUBMITTED		443			
Questions	Number of students Marked-Poor	Number of students Marked-Fair	Number of students Marked-Good	Number of students Marked-Very Good	Number of students Marked - Excellent
The curriculum and syllabi are at par with the industry requirements.	0	5	12	38	394
The institution provides special training for slow learners and motivates the fast learners to excel in the	0	3	16	39	391
The institution motivates the students to learn beyond the curriculum through NPTEL, SWAYAM portal	0	5	18	41	385
The classrooms, laboratories, library are spacious, well maintained and fully equipped with appropriate	0	12	22	42	373
The faculty make use of ICT enabled tools like Google classroom, LMS, NPTEL lectures and LCD projectors for better teaching learning experience.	0	21	27	35	366
The institution provides the students capability and skill enhancement programs at regular intervals.	0	6	18	35	390
Common rooms for boys and girls are available with adequate facilities.	0	15	28	32	374
The quality of the teaching by the faculty members and support extended by them towards the overall development of the students.	0	5	20	33	391
The conduct of examinations and evaluation system (both internal and external exams) is effective	0	12	31	38	368
The quality of the food and hygiene maintenance in the hostel mess and canteen/cafeteria.	0	5	30	38	376

The curriculum and syllabi are at par with the industry requirements.





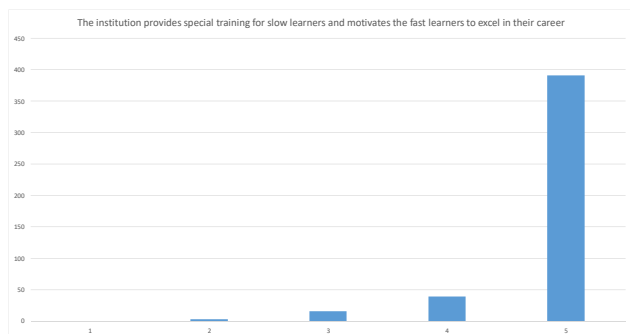
MAILAM ENGINEERING COLLEGE

(Approved by AICTE, New Delhi, Affiliated to Anna University Chennai
& Accredited by TATA Consultancy Services TCS, Accredited by NBA, New Delhi)

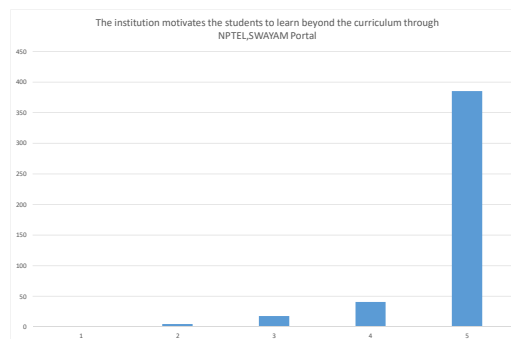
DEPARTMENT OF COMPUTER SCIENCE AND ENGINEERING
Students Feedback Analysis report - Academic year:2019-2020

Date: 19.03.20

The institution provides special training for slow learners and motivates the fast learners to excel in their career.

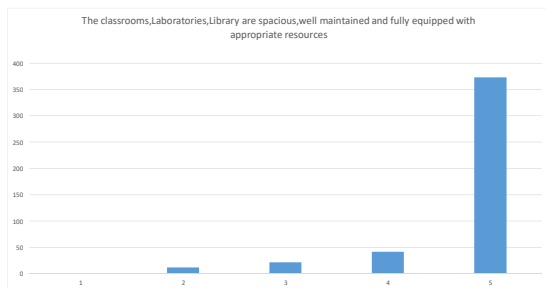


The institution motivates the students to learn beyond the curriculum through SWAYAM portal.

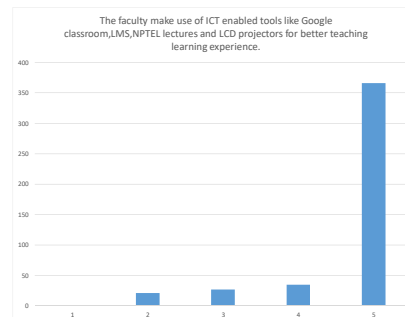


through

The classrooms, laboratories, library are spacious, well maintained and fully equipped with appropriate resources.



The faculty make use of ICT enabled tools like Google classroom, LMS, NPTEL lectures and LCD projectors for better teaching learning experience.



Dr. R. RAJAPPA, PAB
Principal
Mailam Engineering College
Mailam - 605 004, Villupuram Dist.



MAILAM ENGINEERING COLLEGE

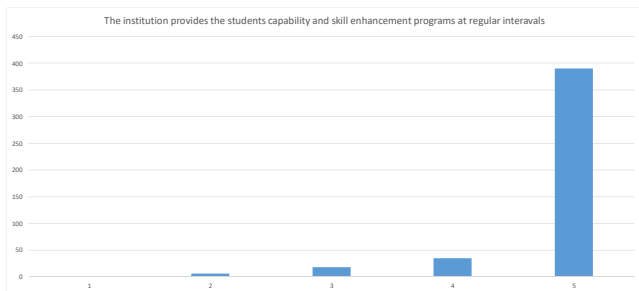
(Approved by AICTE, New Delhi, Affiliated to Anna University Chennai
& Accredited by TATA Consultancy Services TCS, Accredited by NBA, New Delhi)

DEPARTMENT OF COMPUTER SCIENCE AND ENGINEERING

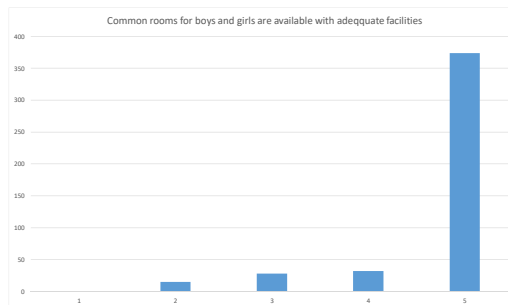
Students Feedback Analysis report - Academic year:2019-2020

Date: 19.03.20

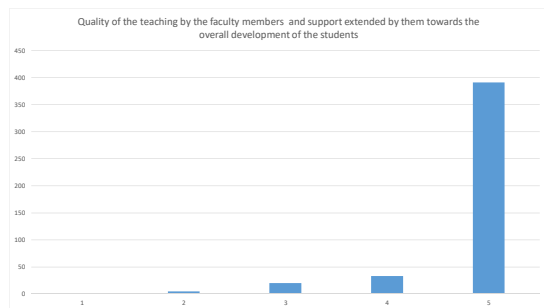
The institution provides the students capability and skill enhancement programs at regular intervals.



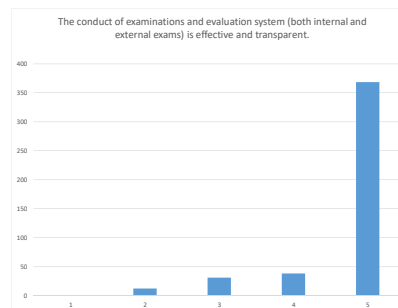
Common rooms for boys and girls are available with adequate facilities.



Quality of the teaching by the faculty members and support extended by them towards the overall development of the students.



The conduct of examinations and evaluation system (both internal and exams) is effective and transparent.



Dr. S. ELAZHAPPAN, PUL.
Principal
Mailam Engineering College
Mailam - 626 204, Virudhunagar (TN)



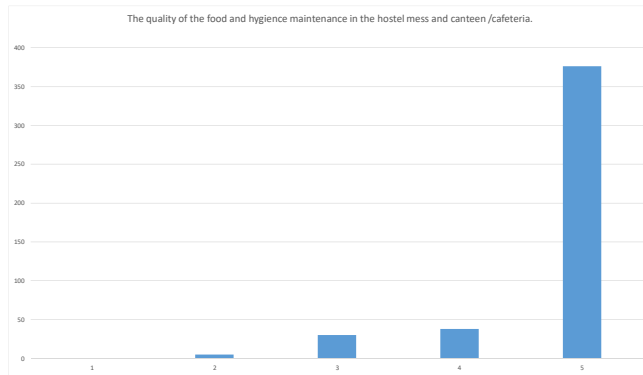
MAILAM ENGINEERING COLLEGE

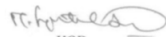
(Approved by AICTE, New Delhi, Affiliated to Anna University Chennai
& Accredited by TATA Consultancy Services TCS, Accredited by NBA, New Delhi)

DEPARTMENT OF COMPUTER SCIENCE AND ENGINEERING
Students Feedback Analysis report - Academic year:2019-2020

Date: 19.03.20

The quality of the food and hygiene maintenance in the hostel mess and canteen/cafeteria.




HOD




Dr. S. RAJKUMAR, P.B.
Principal
Mailam Engineering College
Mailam - 641 044, Vilupuram (Dt.)


PRINCIPAL



MAILAM ENGINEERING COLLEGE

(Approved by AICTE, New Delhi, Affiliated to Anna University Chennai
& Accredited by TATA Consultancy Services TCS, Accredited by NBA, New Delhi)

DEPARTMENT OF COMPUTER SCIENCE AND ENGINEERING
Students Feedback Analysis report - Academic year:2018-2019

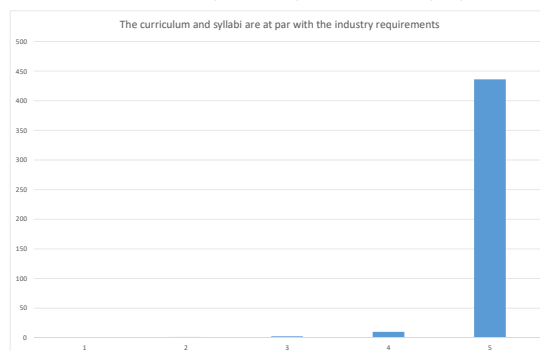
Date: 19.03.19

TOTAL FEEDBACK SUBMITTED

449

Questions	Number of students Marked-Poor	Number of students Marked-Fair	Number of students Marked-Good	Number of students Marked-Very Good	Number of students Marked - Excellent
The curriculum and syllabi are at par with the industry requirements.	0	1	2	10	436
The institution provides special training for slow learners and motivates the fast learners to excel in the	0	1	2	15	431
The institution motivates the students to learn beyond the curriculum through NPTEL, SWAYAM portal	0	1	7	25	416
The classrooms, laboratories, library are spacious, well maintained and fully equipped with appropriate	0	7	6	12	424
The faculty make use of ICT enabled tools like Google classroom, LMS, NPTEL lectures and LCD projectors for better teaching learning experience.	0	5	4	12	428
The institution provides the students capability and skill enhancement programs at regular intervals.	0	6	4	12	427
Common rooms for boys and girls are available with adequate facilities.	0	7	5	8	429
Quality of the teaching by the faculty members and support extended by them towards the overall development of the students.	0	12	28	10	399
The conduct of examinations and evaluation system (both internal and external exams) is effective	0	5	7	10	427
The quality of the food and hygiene maintenance in the hostel mess and canteen/cafeteria.	0	2	15	15	417

The curriculum and syllabi are at par with the industry requirements.



Dr. S. RAJAPPA, Ph.D.
Principal
Mailam Engineering College
Mailam - 645 004, Villupuram (TN)



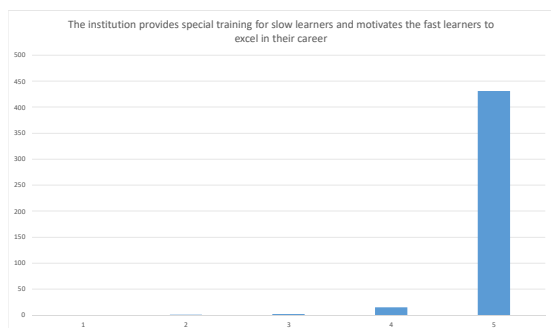
MAILAM ENGINEERING COLLEGE

(Approved by AICTE, New Delhi, Affiliated to Anna University Chennai
& Accredited by TATA Consultancy Services TCS, Accredited by NBA, New Delhi)

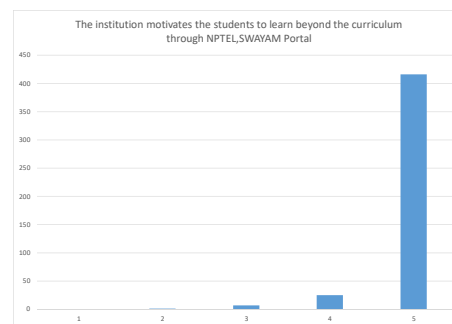
DEPARTMENT OF COMPUTER SCIENCE AND ENGINEERING
Students Feedback Analysis report - Academic year:2018-2019

Date: 19.03.19

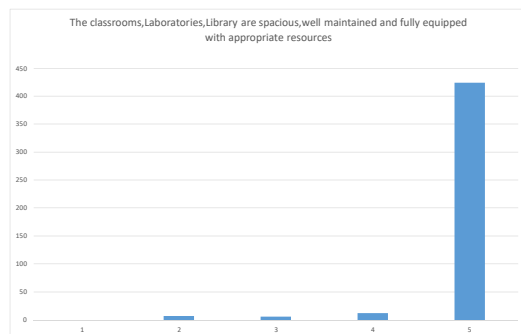
The institution provides special training for slow learners and motivates the fast learners to excel in their career.



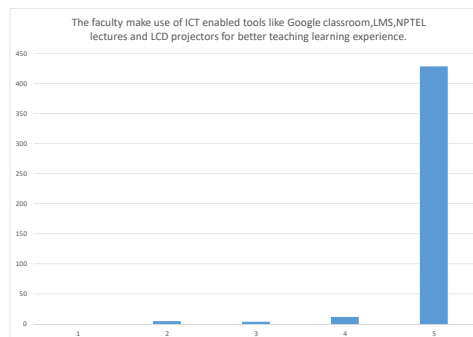
The institution motivates the students to learn beyond the curriculum NPTEL, SWAYAM portal.



The classrooms, laboratories, library are spacious, well maintained and fully equipped with appropriate resources.



The faculty make use of ICT enabled tools like Google classroom, LMS, NPTEL lectures and LCD projectors for better teaching learning experience.



Dr. S. RAJAPPAN, P.B.
Principal
Mailam Engineering College
Mailam - 605 004, Villupuram (TN)



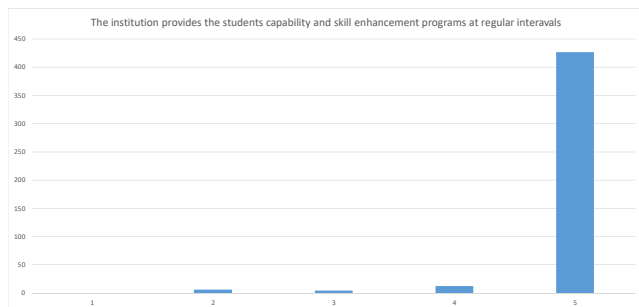
MAILAM ENGINEERING COLLEGE

(Approved by AICTE, New Delhi, Affiliated to Anna University Chennai
& Accredited by TATA Consultancy Services TCS, Accredited by NBA, New Delhi)

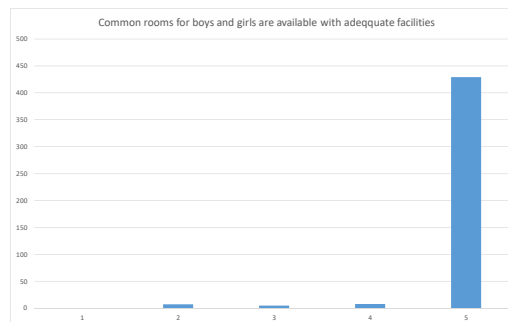
DEPARTMENT OF COMPUTER SCIENCE AND ENGINEERING
Students Feedback Analysis report - Academic year:2018-2019

Date: 19.03.19

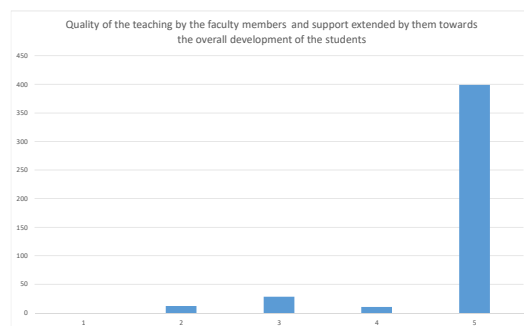
The institution provides the students capability and skill enhancement programs at regular intervals.



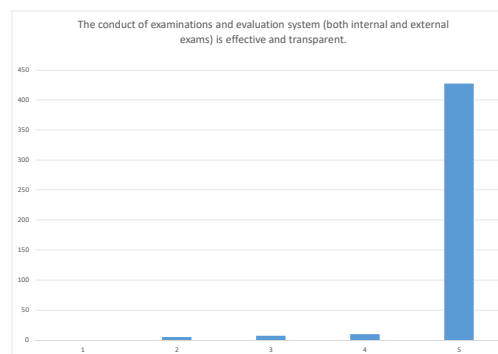
Common rooms for boys and girls are available with adequate facilities.



Quality of the teaching by the faculty members and support extended by them towards the overall development of the students.



The conduct of examinations and evaluation system (both internal and external exams) is effective and transparent.



Dr. S. SUGANTHAN, M.B.
Principal
Mailam Engineering College
Mailam - 604 004, Villupuram (TN)



MAILAM ENGINEERING COLLEGE

(Approved by AICTE, New Delhi, Affiliated to Anna University Chennai
& Accredited by TATA Consultancy Services TCS, Accredited by NBA, New Delhi)

DEPARTMENT OF COMPUTER SCIENCE AND ENGINEERING
Students Feedback Analysis report - Academic year:2018-2019

Date: 19.03.19

The quality of the food and hygiene maintenance in the hostel mess and canteen/cafeteria.



h
Dr. D. SRIJAYAN, Ph.D.
Principal
Mailam Engineering College
Kudalur - 641 014, Vellore (TN)

[Signature]
HOD

[Signature]
PRINCIPAL



MAILAM ENGINEERING COLLEGE

(Approved by AICTE, New Delhi, Affiliated to Anna University Chennai
& Accredited by TATA Consultancy Services TCS, Accredited by NBA, New Delhi)

DEPARTMENT OF COMPUTER SCIENCE AND ENGINEERING
Students Feedback Analysis report - Academic year:2017-2018

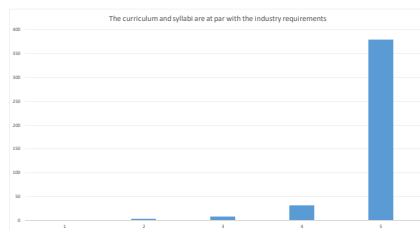
Date: 22.03.18

TOTAL FEEDBACK SUBMITTED

421

Questions	Number of students Marked-Poor	Number of students Marked-Fair	Number of students Marked-Good	Number of students Marked-Very	Number of students Marked - Excellent
The curriculum and syllabi are at par with the industry requirements.	0	3	8	31	379
The institution provides special training for slow learners and motivates the fast learners to excel in their career.	0	6	15	20	380
The institution motivates the students to learn beyond the curriculum through NPTEL, SWAYAM portal.	0	1	5	25	390
The classrooms, laboratories, library are spacious, well maintained and fully equipped with appropriate resources.	0	3	6	24	388
The faculty make use of ICT enabled tools like Google classroom, LMS, NPTEL lectures and LCD projectors for better teaching learning experience.	0	1	5	24	391
The institution provides the students capability and skill enhancement programs at regular intervals.	0	2	12	15	392
Common rooms for boys and girls are available with adequate facilities.	0	5	5	21	390
Quality of the teaching by the faculty members and support extended by them towards the overall development of the students.	0	2	8	12	399
The conduct of examinations and evaluation system (both internal and external exams) is effective and transparent.	0	5	1	11	404
The quality of the food and hygiene maintenance in the hostel mess and canteen/cafeteria.	0	2	5	15	399

The curriculum and syllabi are at par with the industry requirements.





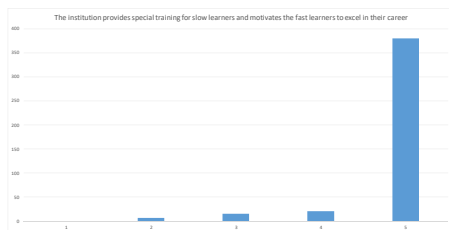
MAILAM ENGINEERING COLLEGE

(Approved by AICTE, New Delhi, Affiliated to Anna University Chennai
& Accredited by TATA Consultancy Services TCS, Accredited by NBA, New Delhi)

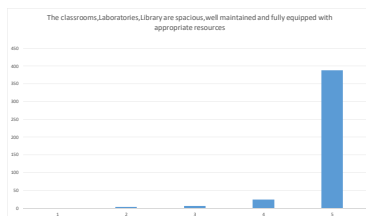
DEPARTMENT OF COMPUTER SCIENCE AND ENGINEERING
Students Feedback Analysis report - Academic year:2017-2018

Date: 22.03.18

The institution provides special training for slow learners and motivates the fast learners to excel in their career.



The classrooms, laboratories, library are spacious, well maintained and fully equipped with appropriate resources.



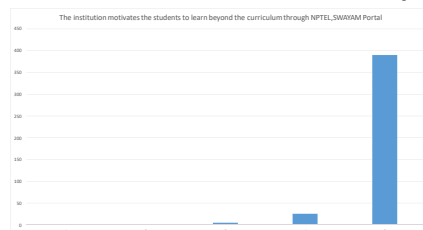
Dr. P. S. Sathya Gopal, MBA
Quality Improvement Officer
NBA, New Delhi, India

The institution motivates the students to learn beyond

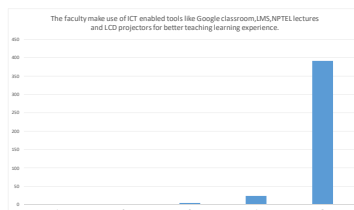
the

curriculum

through NP



The faculty make use of ICT enabled tools like Google classroom, LMS, NPTEL lectures and LCD projectors for better teaching learning experience.





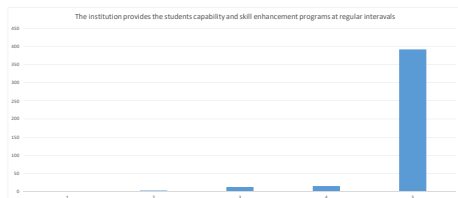
MAILAM ENGINEERING COLLEGE

(Approved by AICTE, New Delhi, Affiliated to Anna University Chennai
& Accredited by TATA Consultancy Services TCS, Accredited by NBA, New Delhi)

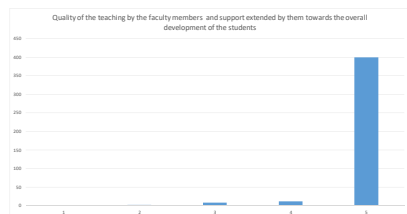
DEPARTMENT OF COMPUTER SCIENCE AND ENGINEERING
Students Feedback Analysis report - Academic year:2017-2018

Date: 22.03.18

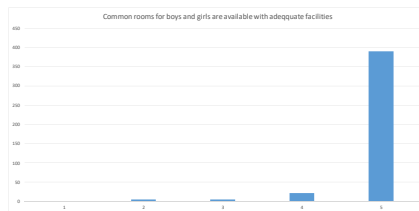
The institution provides the students capability and skill enhancement programs at regular intervals.



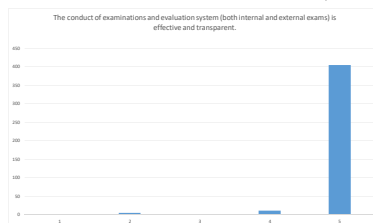
Quality of the teaching by the faculty members and support extended by them towards the overall development of the students.



Common rooms for boys and girls are available with



internal and external exams) is effective





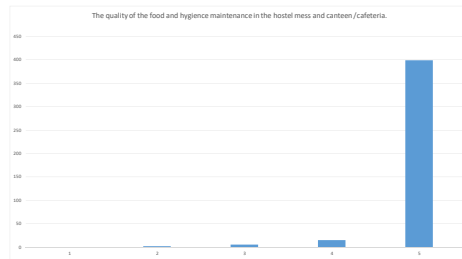
MAILAM ENGINEERING COLLEGE

(Approved by AICTE, New Delhi, Affiliated to Anna University Chennai
& Accredited by TATA Consultancy Services TCS, Accredited by NBA, New Delhi)

DEPARTMENT OF COMPUTER SCIENCE AND ENGINEERING
Students Feedback Analysis report - Academic year:2017-2018

Date: 22.03.18

The quality of the food and hygiene maintenance in the hostel mess and canteen/cafeteria.




HOD




Dr. S. SUGATHA, M.B.
Principal
Mailam Engineering College
Mailam, Tirunelveli, Tamil Nadu-626 001


PRINCIPAL



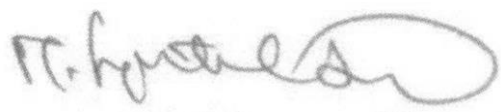
MAILAM ENGINEERING COLLEGE


(Approved by AICTE, New Delhi, Affiliated to Anna University Chennai & Accredited by NBA & TATA Consultancy Services)

Department of Computer Science and Engineering ACTION TAKEN REPORT ON STAKEHOLDERS FEEDBACK ACADEMIC PERFORMANCE AND AMBIENCE

ACADEMIC YEAR: 2021- 2022

S.NO	PROGRAM /BRANCH	STAKE HOLDER	FEEDBACK QUESTIONS	RECOMMENDATION	ACTION TAKEN
1	B.E/ CSE	STUDENTS	Quality of the teaching by the faculty members and support extended by them towards the overall development of the students.	It is already being done.	Staff Members instruct to More FDP participation through online or off-line mode.


HOD


PRINCIPAL




Dr. R. RAJAPPAN, Ph.D.
Principal
Mailam Engineering College
Mailam - 604 304, Villupuram (Dt.)



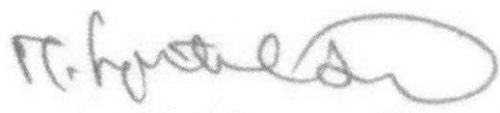
MAILAM ENGINEERING COLLEGE

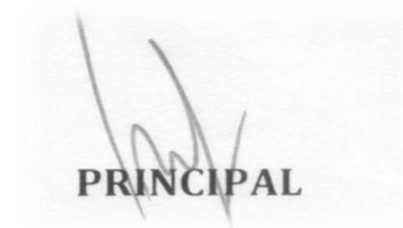
(Approved by AICTE, New Delhi, Affiliated to Anna University Chennai & Accredited by NBA & TATA Consultancy Services)


Department of Computer Science and Engineering ACTION TAKEN REPORT ON STAKEHOLDERS FEEDBACK ACADEMIC PERFORMANCE AND AMBIENCE

ACADEMIC YEAR: 2020- 2021

S.NO	PROGRAM /BRANCH	STAKE HOLDER	FEEDBACK QUESTIONS	RECOMMENDATION	ACTION TAKEN
1	B.E/ CSE	STUDENTS	The faculty make use of ICT enabled tools like Google classroom, LMS, NPTEL lectures and LCD projectors for better teaching learning experience.	HoDs and faculty members are encouraged to make classroom teaching effective through use of ICT enabled classrooms.	ICT enabled tools are regularly used for enhanced teaching and learning.


HOD


PRINCIPAL



Dr. R. RAJAPPAN, Ph.D.
Principal
Mailam Engineering College
Mailam - 604 304, Villupuram (Dt.)



MAILAM ENGINEERING COLLEGE

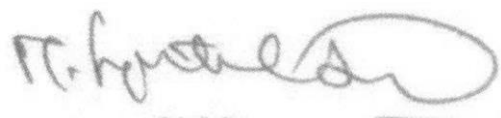
(Approved by AICTE, New Delhi, Affiliated to Anna University Chennai & Accredited by NBA & TATA Consultancy Services)

Department of Computer Science and Engineering ACTION TAKEN REPORT ON STAKEHOLDERS FEEDBACK

ACADEMIC PERFORMANCE AND AMBIENCE

ACADEMIC YEAR: 2019- 2020

S.NO	PROGRAM /BRANCH	STAKE HOLDER	FEEDBACK QUESTIONS	RECOMMENDATION	ACTION TAKEN
1	B.E/ CSE	STUDENTS	Common rooms for boys and girls are available with adequate facilities.	The points have been noted by HOD and forwarded to principal.	These points convey to Management through Principal. Necessary solution for that informed by Management.


HOD


PRINCIPAL




Dr. R. RAJAPPAN, Ph.D.
Principal
Mailam Engineering College
Mailam - 604 304, Villupuram (Dt.)



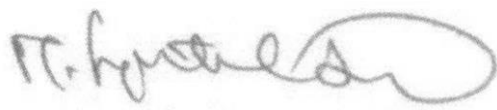
MAILAM ENGINEERING COLLEGE

(Approved by AICTE, New Delhi, Affiliated to Anna University Chennai & Accredited by NBA & TATA Consultancy Services)

Department of Computer Science and Engineering ACTION TAKEN REPORT ON STAKEHOLDERS FEEDBACK ACADEMIC PERFORMANCE AND AMBIENCE

ACADEMIC YEAR: 2018- 2019

S.NO	PROGRAM /BRANCH	STAKE HOLDER	FEEDBACK QUESTIONS	RECOMMENDATION	ACTION TAKEN
1	B.E/ CSE	STUDENTS	The quality of the food and hygiene maintenance in the hostel mess and canteen/cafeteria.	Conveyed to Principal through Canteen and Hostel In charges.	Immediate action taken by Management through Principal to change the Canteen Contractor.


HOD


PRINCIPAL




Dr. R. RAJAPPAN, Ph.D.
Principal
Mailam Engineering College
Mailam - 604 304, Villupuram (Dt.)



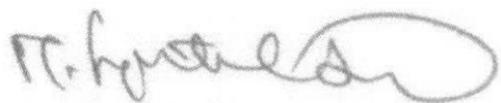
MAILAM ENGINEERING COLLEGE

(Approved by AICTE, New Delhi, Affiliated to Anna University Chennai & Accredited by NBA & TATA Consultancy Services)



Department of Computer Science and Engineering ACTION TAKEN REPORT ON STAKEHOLDERS FEEDBACK ACADEMIC PERFORMANCE AND AMBIENCE

ACADEMIC YEAR: 2017-2018

S.NO	PROGRAM /BRANCH	STAKE HOLDER	FEEDBACK QUESTIONS	RECOMMENDATION	ACTION TAKEN
1	B.E/ CSE	STUDENTS	The institution provides the students capability and skill enhancement programs at regular intervals.	The points have been noted by HOD and forwarded to principal.	To enhance the student's skill, the students have participated in various project expo, courses, training programs, motivation programs etc


HOD


PRINCIPAL



Dr. R. RAJAPPAN, Ph.D.
Principal
Mailam Engineering College
Mailam - 604 304, Villupuram (Dt.)