



MAILAM ENGINEERING COLLEGE

(Approved by AICTE, New Delhi, Affiliated to Anna University Chennai & Accredited by TATA Consultancy Services TCE, Accredited by NBA, New Delhi)

DEPARTMENT OF INFORMATION TECHNOLOGY

Students Feedback Analysis report - Academic Year:2021-2022

Date: 23/3/22

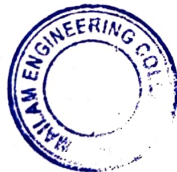
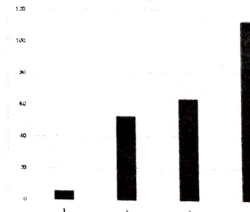
TOTAL FEEDBACK SUBMITTED

238

Questions	Number of students Marked-Poor	Number of students Marked-Fair	Number of students Marked-Good	Number of students Marked-Very Good	Number of students Marked-Excellent
The curriculum and syllabi are at par with the industry requirements.	2	6	53	64	113
The institution provides special training for slow learners and motivates the fast learners to excel in their career.	1	4	40	49	144
The institution motivates the students to learn beyond the curriculum through NPTEL, SWAYAM portal.	0	5	39	51	143
The classrooms, laboratories, library are spacious, well maintained and fully equipped with appropriate resources.	1	6	41	53	137
The faculty make use of ICT enabled tools like Google classroom, LMS, NPTEL lectures and LCD projectors for better teaching learning experience.	2	6	45	47	138
The institution provides the students capability and skill enhancement programs at regular intervals.	1	6	45	55	131
Common rooms for boys and girls are available with adequate facilities.	2	6	40	58	132
Quality of the teaching by the faculty members and support extended by them towards the overall development of the students.	0	4	42	53	139
The conduct of examinations and evaluation system (both internal and external exams) is effective and transparent.	0	5	43	52	138
The quality of the food and hygiene maintenance in the hostel mess and canteen/cafeteria.	2	6	40	59	131

The curriculum and syllabi are at par with the industry requirements.

The curriculum and syllabi are at par with the industry requirements



Dr. R. RAJAPPAN, Ph.D.
Principal
Mailam Engineering College
Mailam - 604 304, Villupuram (Dt.)



MAILAM ENGINEERING COLLEGE

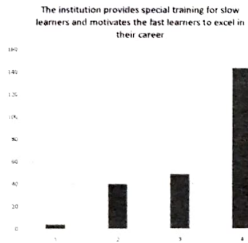
(Approved by AICTE, New Delhi, Affiliated to Anna University Chennai & Accredited by TATA Consultancy Services TCS, Accredited by NBA, New Delhi)

DEPARTMENT OF INFORMATION TECHNOLOGY

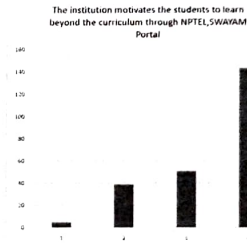
Students Feedback Analysis report - Academic Year:2021-2022

Date: 23/3/22

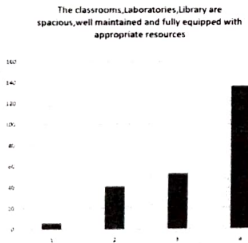
The institution provides special training for slow learners and motivates the fast learners to excel in their career.



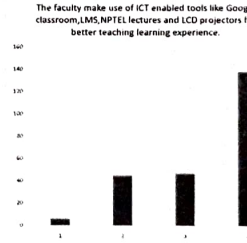
The institution motivates the students to learn beyond the curriculum



The classrooms, laboratories, library are spacious, well maintained and fully equipped with appropriate resources.



The faculty make use of ICT enabled tools like Google classroom, LMS, NPTEL



R. Rajappan
Dr. R. RAJAPPAN, Ph.D.
 Principal
 Mailam Engineering College
 Mailam - 604 304, Villupuram (Dt.)



MAILAM ENGINEERING COLLEGE

(Approved by AICTE, New Delhi, Affiliated to Anna University Chennai & Accredited by TATA Consultancy Services TCS, Accredited by NBA, New Delhi)

DEPARTMENT OF INFORMATION TECHNOLOGY

Students Feedback Analysis report - Academic Year:2021-2022

Date: 23/3/22

The institution provides the students capability and skill enhancement programs at regular intervals.

The institution provides the students capability and skill enhancement programs at regular intervals



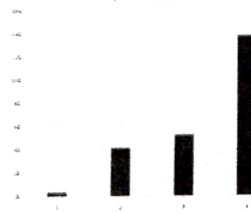
Common rooms for boys and girls are available with adequate facilities.

Common rooms for boys and girls are available with adequate facilities



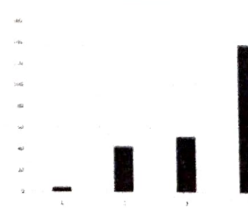
Quality of the teaching by the faculty members and support extended by them towards the overall development of the

Quality of the teaching by the faculty members and support extended by them towards the overall development of the students



The conduct of examinations and evaluation system (both internal and

The conduct of examinations and evaluation system (both internal and external exams) is effective and transparent



Dr. R. Rajappan
Dr. R. RAJAPPAN, Ph.D.
 Principal
 Mailam Engineering College
 Mailam - 604 304, Villupuram (Dt.)



MAILAM ENGINEERING COLLEGE

(Approved by AICTE, New Delhi, Affiliated to Anna University Chennai
& Accredited by TATA Consultancy Services TCS, Accredited by NBA, New Delhi)

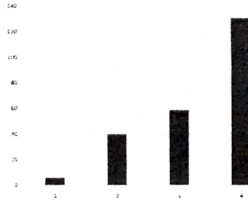
DEPARTMENT OF INFORMATION TECHNOLOGY

Students Feedback Analysis report - Academic Year:2021-2022

Date: 23/3/22

The quality of the food and hygiene maintenance in the hostel mess and canteen/cafeteria.

The quality of the food and hygiene maintenance in
the hostel mess and canteen /cafeteria.



HoD




Dr. R. RAJAPPAN, Ph.D.
Principal
Mailam Engineering College
Mailam - 604 304, Villupuram (Dt.)

Principal



MAILAM ENGINEERING COLLEGE

(Approved by AICTE, New Delhi, Affiliated to Anna University Chennai & Accredited by JNTU Coimbatore Section I/CB, Accredited by MBA, New Delhi)

DEPARTMENT OF INFORMATION TECHNOLOGY
Students Feedback Analysis report - Academic year:2020-2021

Date: 26/3/21

TOTAL FEEDBACK SUBMITTED

159

Questions	Number of students Marked-Poor	Number of students Marked-Fair	Number of students Marked-Good	Number of students Marked-Very Good	Number of students Marked Excellent
The curriculum and syllabi are at par with the industry requirements.	1	7	28	21	104
The institution provides special training for slow learners and motivates the fast learners to excel in their career.	2	6	24	20	107
The institution motivates the students to learn beyond the curriculum through NPTEL SWAYAM portal.	1	6	25	28	99
The classrooms, laboratories, library are spacious, well maintained and fully equipped with appropriate resources.	1	5	20	21	112
The faculty make use of ICT enabled tools like Google classroom, LMS, NPTEL lectures and LCD projectors for better teaching learning experience	2	7	20	27	103
The institution provides the students capability and skill enhancement programs at regular intervals.	0	2	24	36	97
Common rooms for boys and girls are available with adequate facilities.	1	3	24	35	96
Quality of the teaching by the faculty members and support extended by them towards the overall development of the students.	0	3	29	32	95
The conduct of examinations and evaluation system (both internal and external exams) is effective and transparent.	0	2	24	34	99
The quality of the food and hygiene maintenance in the hostel mess and canteen/cafeteria.	1	3	28	32	97

The curriculum and syllabi are at par with the industry requirements.

The curriculum and syllabi are at par with the industry requirements



Dr. R. RAJAPPAN, Ph.D.
Principal
Mailam Engineering College
Mailam - 604 304, Villupuram (Dt.)





MAILAM ENGINEERING COLLEGE

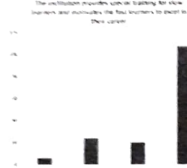
(Approved by AICTE, New Delhi; Affiliated to Anna University Chennai & Accredited by TATA Consultancy Services (TCS, Accredited to MBA, New Delhi)

DEPARTMENT OF INFORMATION TECHNOLOGY

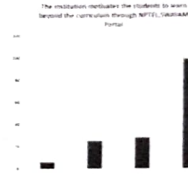
Students Feedback Analysis report - Academic year:2020-2021

Date: 26/3/21

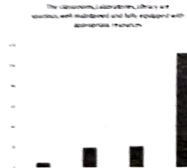
The institution provides special training for slow learners and motivates the fast learners to excel in their career.



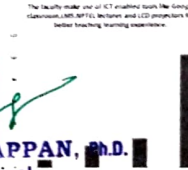
The institution motivates the students to learn beyond the curriculum



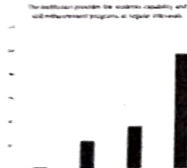
The classrooms, laboratories, library are spacious, well maintained and fully equipped with appropriate resources.



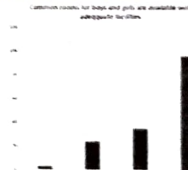
The faculty make use of ICT enabled tools like Google classroom, LMS, NPTEL



The institution provides the students capability and skill enhancement programs at regular intervals.



The institution provides the students capability and skill enhancement programs at regular intervals.



Dr. R. RAJAPPAN, Ph.D.
Principal
Mailam Engineering College
Mailam - 604 304, Villupuram (Dt), Tamil Nadu





MAILAM ENGINEERING COLLEGE

(Approved by AICTE, New Delhi, Affiliated to Anna University Chennai)
& Accredited by TATA Consultancy Services TCS, Accredited by NBA, New Delhi)

DEPARTMENT OF INFORMATION TECHNOLOGY
Students Feedback Analysis report - Academic year:2020-2021

Date: 26/3/21

Quality of the teaching by the faculty members and support extended by them towards the overall development of the

Quality of the teaching by the faculty members and support extended by them towards the overall development of the students



The conduct of examinations and evaluation system (both internal and

The conduct of examinations and evaluation system (both internal and external exams) is effective and transparent.



The quality of the food and hygiene maintenance in the hostel mess and canteen/cafeeteria.

The quality of the food and hygiene maintenance in the hostel mess and canteen/cafeeteria.



Dr. R. RAJAPPAN, Ph.D.
Principal
Mailam Engineering College
Mailam - 604 304, Villupuram (Dt.)



HoD

Principal



MAILAM ENGINEERING COLLEGE

(Approved by AICTE, New Delhi, Affiliated to Anna University Chennai & Accredited by TATA Consultancy Services TCS, Accredited by NBA, New Delhi)

DEPARTMENT OF INFORMATION TECHNOLOGY

Students Feedback Analysis report - Academic Year:2019-2020

Date: 20/3/20

TOTAL FEEDBACK SUBMITTED

148

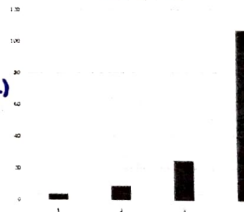
Questions	Number of students Marked-Poor	Number of students Marked-Fair	Number of students Marked-Good	Number of students Marked-Very Good	Number of students Marked-Excellent
The curriculum and syllabi are at par with the industry requirements.	3	4	9	25	107
The institution provides special training for slow learners and motivates the fast learners to excel in their career.	1	2	8	22	115
The institution motivates the students to learn beyond the curriculum through NPTEL, SWAYAM portal.	2	2	8	30	106
The classrooms, laboratories, library are spacious, well maintained and fully equipped with appropriate resources.	1	2	9	21	115
The faculty make use of ICT enabled tools like Google classroom, LMS, NPTEL lectures and LCD projectors for better teaching learning experience.	2	2	8	24	112
The institution provides the students capability and skill enhancement programs at regular intervals.	1	1	6	26	114
Common rooms for boys and girls are available with adequate facilities.	1	2	7	35	103
Quality of the teaching by the faculty members and support extended by them towards the overall development of the students.	2	3	9	24	110
The conduct of examinations and evaluation system (both internal and external exams) is effective and transparent.	1	2	7	29	109
The quality of the food and hygiene maintenance in the hostel mess and canteen/cafeteria.	1	2	8	22	115



Dr. R. RAJAPPAN, Ph.D.
Principal
Mailam Engineering College
Mailam - 604 304, Villupuram (Dt.)

The curriculum and syllabi are at par with the industry requirements.

The curriculum and syllabi are at par with the industry requirements





MAILAM ENGINEERING COLLEGE

(Approved by AICTE, New Delhi, Affiliated to Anna University Chennai & Accredited by TATA Consultancy Services TCS, Accredited by NBA, New Delhi)

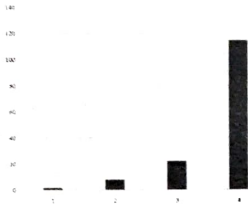
DEPARTMENT OF INFORMATION TECHNOLOGY

Students Feedback Analysis report - Academic Year:2019-2020

Date: 20/3/20

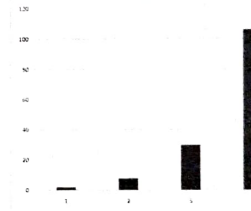
The institution provides special training for slow learners and motivates the fast learners to excel in their career.

The institution provides special training for slow learners and motivates the fast learners to excel in their career.



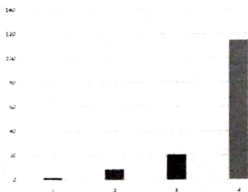
The institution motivates the students to learn beyond the curriculum

The institution motivates the students to learn beyond the curriculum through NPTEL,SWAYAM Portal



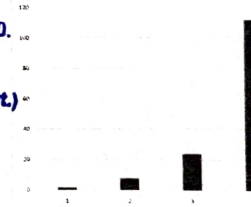
The classrooms, laboratories, library are spacious, well maintained and fully equipped with appropriate resources.

The classrooms, Laboratories, Library are spacious, well maintained and fully equipped with appropriate resources



The faculty make use of ICT enabled tools like Google classroom, LMS, NPTEL

The faculty make use of ICT enabled tools like Google classroom,LMS,NPTEL lectures and LCD projectors for better teaching learning experience.



Dr. R. RAJAPPAN, Ph.D.
Principal
Mailam Engineering College
Mailam - 604 304, Villupuram (Dt.)



MAILAM ENGINEERING COLLEGE

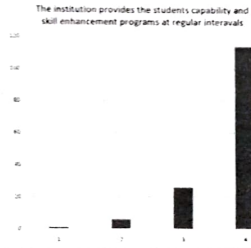
(Approved by AICTE, New Delhi, Affiliated to Anna University Chennai
& Accredited by TATA Consultancy Services TCS, Accredited by NBA, New Delhi)

DEPARTMENT OF INFORMATION TECHNOLOGY

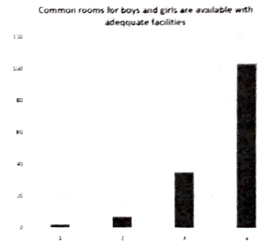
Students Feedback Analysis report - Academic Year:2019-2020

Date: 20/3/20

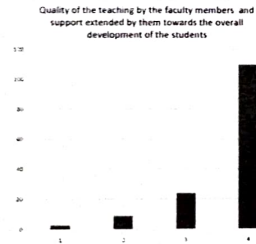
The institution provides the students capability and skill enhancement programs at regular intervals.



Common rooms for boys and girls are available with adequate facilities.

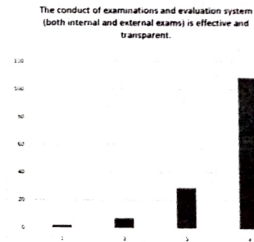


Quality of the teaching by the faculty members and support extended by them towards the overall development of the



Dr. R. RAJAPPAN
Dr. R. RAJAPPAN, Ph.D.
Principal
Mailam Engineering College
Mailam - 604 304, Villupuram (Dt.)

The conduct of examinations and evaluation system (both internal and





MAILAM ENGINEERING COLLEGE

(Approved by AICTE, New Delhi, Affiliated to Anna University Chennai
& Accredited by TATA Consultancy Services TCS, Accredited by NBA, New Delhi)

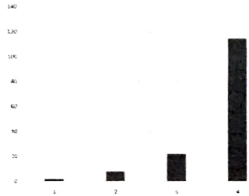
DEPARTMENT OF INFORMATION TECHNOLOGY

Students Feedback Analysis report - Academic Year:2019-2020

Date: 20/3/20

The quality of the food and hygiene maintenance in the hostel mess and canteen/cafeteria.

The quality of the food and hygiene maintenance in
the hostel mess and canteen /cafeteria



[Handwritten signature]
HoD

[Handwritten signature]

Dr. R. RAJAPPAN, Ph.D.
Principal
Mailam Engineering College
Mailam - 604 304, Villupuram (Dt.)

[Handwritten signature]
Principal



MAILAM ENGINEERING COLLEGE

(Approved by AICTE, New Delhi, Affiliated to Anna University Chennai)
 & Accredited by TATA Consultancy Services TCS, Accredited by NBA, New Delhi)

DEPARTMENT OF INFORMATION TECHNOLOGY
Students Feedback Analysis report - Academic year:2018-2019

Date: 18/3/19

TOTAL FEEDBACK SUBMITTED

125

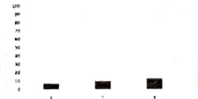
Questions	Number of students Marked-Poor	Number of students Marked-Fair	Number of students Marked-Good	Number of students Marked-Very Good	Number of students Marked-Excellent
The curriculum and syllabi are at par with the industry requirements.	3	7	10	13	92
The institution provides special training for slow learners and motivates the fast learners to excel in their career.	1	8	12	15	89
The institution motivates the students to learn beyond the curriculum through NPTEL, SWAYAM portal.	1	5	8	11	100
The classrooms, laboratories, library are spacious, well maintained and fully equipped with appropriate resources.	2	6	9	11	97
The faculty make use of ICT enabled tools like Google classroom, LMS, NPTEL lectures and LCD projectors for better teaching learning experience.	3	6	10	12	94
The institution provides the students capability and skill enhancement programs at regular intervals.	2	8	10	13	92
Common rooms for boys and girls are available with adequate facilities.	1	7	10	11	96
Quality of the teaching by the faculty members and support extended by them towards the overall development of the students.	1	5	8	13	98
The conduct of examinations and evaluation system (both internal and external exams) is effective and transparent.	2	6	10	12	95
The quality of the food and hygiene maintenance in the hostel mess and canteen/cafeteria.	1	7	12	13	92

The curriculum and syllabi are at par with the industry requirements.



Dr. R. RAJAPPAN, Ph.D.
 Principal
 Mailam Engineering College
 Mailam - 604 304, Villupuram (Dt.)

The curriculum and syllabi are at par with the industry requirements.





MAILAM ENGINEERING COLLEGE

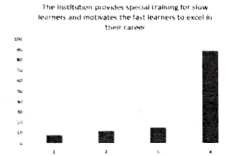
(Approved by AICTE, New Delhi, Affiliated to Anna University Chennai & Accredited by TATA Consultancy Services TCS, Accredited by NBA, New Delhi)

DEPARTMENT OF INFORMATION TECHNOLOGY

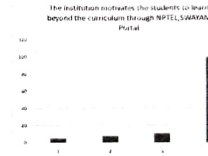
Students Feedback Analysis report - Academic year:2018-2019

Date: 18/3/19

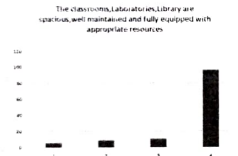
The institution provides special training for slow learners and motivates the fast learners to excel in their career.



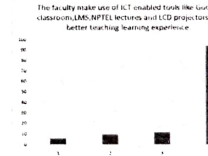
The institution motivates the students to learn beyond the curriculum



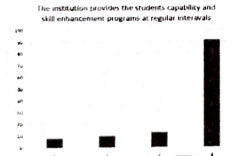
The classrooms, laboratories, library are spacious, well maintained and fully equipped with appropriate resources.



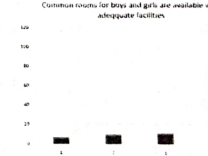
The faculty make use of ICT enabled tools like Google classroom, LMS, NPTEL



The institution provides the students capability and skill enhancement programs at regular intervals.



Common rooms for boys and girls are available with adequate facilities.



Dr. R. RAJAPPAN, Ph.D.
Principal
Mailam Engineering College
Mailam - 604 304, Villupuram (Dt.)





MAILAM ENGINEERING COLLEGE

(Approved by AICTE, New Delhi, Affiliated to Anna University Chennai
& Accredited by TQA Consultancy Services TCS, Accredited by NBA, New Delhi)

DEPARTMENT OF INFORMATION TECHNOLOGY

Students Feedback Analysis report - Academic year:2018-2019

Date: 18/3/19

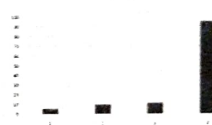
Quality of the teaching by the faculty members and support extended by them towards the overall development of the students.

Quality of the teaching by the faculty members and support extended by them towards the overall development of the students.



The conduct of examinations and evaluation system (both internal and external exams) is effective and transparent.

The conduct of examinations and evaluation system (both internal and external exams) is effective and transparent.




The quality of the food and hygiene maintenance in the hostel mess and canteen/cafeteria.

The quality of the food and hygiene maintenance in the hostel mess and canteen/cafeteria.




Dr. R. RAJAPPAN, Ph.D.
Principal
Mailam Engineering College
Mailam - 604 304, Villupuram (Dt.)


HoD




Principal



MAILAM ENGINEERING COLLEGE

(Approved by AICTE, New Delhi, Affiliated to Anna University Chennai & Accredited by TATA Consultancy Services TCS, Accredited by NBA, New Delhi)

DEPARTMENT OF INFORMATION TECHNOLOGY

Students Feedback Analysis report - Academic year:2017-2018

Date: 21/3/18

TOTAL FEEDBACK SUBMITTED

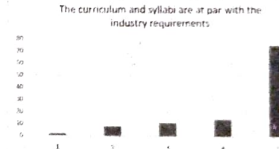
110

Questions	Number of students Marked-Poor	Number of students Marked-Fair	Number of students Marked-Good	Number of students Marked-Very Good	Number of students Marked-Excellent
The curriculum and syllabi are at par with the industry requirements.	2	8	11	14	75
The institution provides special training for slow learners and motivates the fast learners to excel in their career.	1	9	10	12	78
The institution motivates the students to learn beyond the curriculum through NPTEL, SWAYAM portal.	1	7	12	13	77
The classrooms, laboratories, library are spacious, well maintained and fully equipped with appropriate resources.	1	5	11	14	79
The faculty make use of ICT enabled tools like Google classroom, LMS, NPTEL lectures and LCD projectors for better teaching learning experience.	2	10	11	12	75
The institution provides the students capability and skill enhancement programs at regular intervals.	3	8	10	14	75
Common rooms for boys and girls are available with adequate facilities.	1	7	11	12	79
Quality of the teaching by the faculty members and support extended by them towards the overall development of the students.	1	6	9	13	81
The conduct of examinations and evaluation system (both internal and external exams) is effective and transparent.	2	5	9	12	82
The quality of the food and hygiene maintenance in the hostel mess and canteen/cafeteria.	1	5	11	16	77



Dr. R. RAJAPPAN, Ph.D.
Principal
Mailam Engineering College
Mailam - 604 304, Villupuram (Dt.)

The curriculum and syllabi are at par with the industry requirements.





MAILAM ENGINEERING COLLEGE

(Approved by AICTE, New Delhi, Affiliated to Anna University Chennai & Accredited by TATA Consultancy Services TCS, Accredited by NBA, New Delhi)

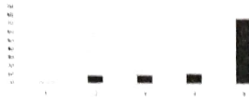
DEPARTMENT OF INFORMATION TECHNOLOGY

Students Feedback Analysis report - Academic year:2017-2018

Date: 21/3/18

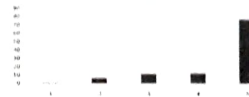
The institution provides special training for slow learners and motivates the fast learners to excel in their career.

The institution provides special training for slow learners and motivates the fast learners to excel in their career.



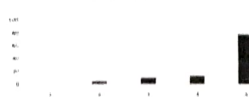
The institution motivates the students to learn beyond the curriculum NPTEL, SWAYAM portal.

The institution motivates the students to learn beyond the curriculum through NPTEL, SWAYAM Portal



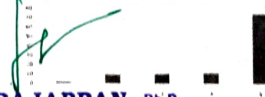
The classrooms, laboratories, library are spacious, well maintained and fully equipped with appropriate resources.

The classrooms, laboratories, library are spacious, well maintained and fully equipped with appropriate resources.



The faculty make use of ICT enabled tools like Google classroom, LMS, NPTEL lectures and LCD projectors for better teaching learning experience.

The faculty make use of ICT enabled tools like Google classroom, LMS, NPTEL lectures and LCD projectors for better teaching learning experience.



The institution provides the students capability and skill enhancement programs at regular intervals.

The institution provides the students capability and skill enhancement programs at regular intervals.



Dr. R. RAJAPPAN, Ph.D.

Principal

Mailam Engineering College
Mailam - 604 304, Villupuram (Dt.)

Common room for boys and girls are available with adequate facilities.

Common room for boys and girls are available with adequate facilities.





MAILAM ENGINEERING COLLEGE

(Approved by AICTE, New Delhi, Affiliated to Anna University Chennai
& Accredited by TATA Consultancy Services TCS, Accredited by NBA, New Delhi)

DEPARTMENT OF INFORMATION TECHNOLOGY

Students Feedback Analysis report - Academic year:2017-2018

Date: 21/3/18

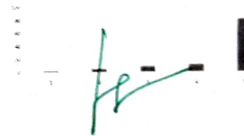
Quality of the teaching by the faculty members and support extended by them towards the overall development of the students.

Quality of the teaching by the faculty members and support extended by them towards the overall development of the students.



The conduct of examinations and evaluation system (both internal and external exams) is effective and transparent.

The conduct of examinations and evaluation system (both internal and external exams) is effective and transparent.



The quality of the food and hygiene maintenance in the hostel mess and canteen/cafeteria.

The quality of the food and hygiene maintenance in the hostel mess and canteen/cafeteria.



Dr. R. RAJAPPAN, Ph.D.
Principal
Mailam Engineering College
Mailam - 604 304, Villupuram (Dt.)

HoD

Principal



Mailam Engineering College

(Approved by AICTE, New Delhi, Affiliated to Anna University Chennai & Accredited by NBA & TATA Consultancy Services)

Department of Information Technology

ACTION TAKEN REPORT ON STAKEHOLDERS FEEDBACK

ACADEMIC PERFORMANCE AND AMBIENCE

ACADEMIC YEAR: 2021- 2022

S.NO	PROGRAM /BRANCH	STAKE HOLDER	FEEDBACK QUESTIONS	RECOMMENDATION	ACTION TAKEN
1	B.TECH/ IT	STUDENTS	The quality of the food and hygiene maintenance in the hostel mess and canteen/cafeteria.	Canteen/hostel in charges taken this point to principal knowledge	Adequate steps have been taken by management through principal to provide quality of food and hygiene maintenance in the hostel and canteen by changing the canteen/hostel cook and also housekeeping taken necessary steps to keep the canteen and hostel clean and neat.



Dr. R. RAJAPPAN, Ph.D.
Principal
Mailam Engineering College
Mailam - 604 304, Villupuram (Dt.)



HoD


PRINCIPAL



Mailam Engineering College

(Approved by AICTE, New Delhi, Affiliated to Anna University Chennai & Accredited by NBA & TATA Consultancy Services)

Department of Information Technology

ACTION TAKEN REPORT ON STAKEHOLDERS FEEDBACK

ACADEMIC PERFORMANCE AND AMBIENCE

ACADEMIC YEAR: 2020- 2021

S.NO	PROGRAM /BRANCH	STAKE HOLDER	FEEDBACK QUESTIONS	RECOMMENDATION	ACTION TAKEN
1	B.TECH/ IT	STUDENTS	The institution provides the students capability and skill enhancement programs at regular intervals.	The points have been noted by HoD and forwarded to principal	To enhance the student's skill, the students have participated in various project expo, courses, training programs, motivation programs etc.,



Dr. R. RAJAPPAN, Ph.D.
Principal
Mailam Engineering College
Mailam - 604 304, Villupuram (Dt.)



HoD


PRINCIPAL



Mailam Engineering College

(Approved by AICTE, New Delhi, Affiliated to Anna University Chennai & Accredited by NBA & TATA Consultancy Services)

Department of Information Technology

ACTION TAKEN REPORT ON STAKEHOLDERS FEEDBACK

ACADEMIC PERFORMANCE AND AMBIENCE

ACADEMIC YEAR: 2019- 2020

S.NO	PROGRAM /BRANCH	STAKE HOLDER	FEEDBACK QUESTIONS	RECOMMENDATION	ACTION TAKEN
1	B.TECH/ IT	STUDENTS	The classrooms, laboratories, library are spacious, well maintained and fully equipped with appropriate resources.	Points is well taken and the principal has forwarded the views to the management for the further action	Management has taken immediate action and extended the very good infrastructure. For student's beneficiary they deployed the central and department library.



Dr. R. RAJAPPAN, Ph.D.
Principal
Mailam Engineering College
Mailam - 604 304, Villupuram (Dt.)



HoD



PRINCIPAL



Mailam Engineering College

(Approved by AICTE, New Delhi, Affiliated to Anna University Chennai & Accredited by NBA & TATA Consultancy Services)

Department of Information Technology

ACTION TAKEN REPORT ON STAKEHOLDERS FEEDBACK

ACADEMIC PERFORMANCE AND AMBIENCE

ACADEMIC YEAR: 2018- 2019

S.NO	PROGRAM /BRANCH	STAKE HOLDER	FEEDBACK QUESTIONS	RECOMMENDATION	ACTION TAKEN
1	B.TECH/ IT	STUDENTS	Quality of the teaching by the faculty members and support extended by them towards the overall development of the students.	HOD and Faculties are encouraged to concentrate on the overall development of the students.	Faculty members register for FDP regularly to enhancing their skill and utilizing effectively for the overall development of the students by feeding various recent technologies and innovation.



Dr. R. RAJAPPAN, Ph.D.
Principal
Mailam Engineering College
Mailam - 604 304, Villupuram (Dt.)



HoD


PRINCIPAL



Mailam Engineering College

(Approved by AICTE, New Delhi, Affiliated to Anna University Chennai & Accredited by NBA & TATA Consultancy Services)

Department of Information Technology

ACTION TAKEN REPORT ON STAKEHOLDERS FEEDBACK

ACADEMIC PERFORMANCE AND AMBIENCE

ACADEMIC YEAR: 2017- 2018

S.NO	PROGRAM /BRANCH	STAKE HOLDER	FEEDBACK QUESTIONS	RECOMMENDATION	ACTION TAKEN
1	B.TECH/ IT	STUDENTS	The institution provides special training for slow learners and motivates the fast learners to excel in their career.	HOD and Faculties are encouraged to concentrate on the slow learners and motivates the fast learners to excel in their career.	Slow learners are given additional coaching and fast learners are motivated to learn additional content beyond the syllabus



Dr. R. RAJAPPAN, Ph.D.
Principal
Mailam Engineering College
Mailam - 604 304, Villupuram (Dt.)



HoD


PRINCIPAL