



MAILAM ENGINEERING COLLEGE

(Approved by AICTE, New Delhi, Affiliated to Anna University Chennai
& Accredited by TATA Consultancy Services TCS, Accredited by NBA, New Delhi)

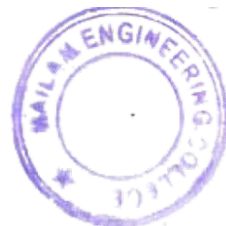
DEPARTMENT OF MECHANICAL ENGINEERING
Students Feedback Analysis report - Academic year:2017-2018

Date: 21.03.18

TOTAL FEEDBACK SUBMITTED

910

Questions	Number of students Marked-Poor	Number of students Marked-Fair	Number of students Marked-Good	Number of students Marked-Very	Number of students Marked - Excellent
The curriculum and syllabi are at par with the industry requirements.	0	2	10	22	876
The institution provides special training for slow learners and motivates the fast learners to excel in their career.	1	3	12	24	870
The institution motivates the students to learn beyond the curriculum through NPTEL, SWAYAM portal.	0	2	3	30	875
The classrooms, laboratories, library are spacious, well maintained and fully equipped with appropriate resources.	0	2	8	14	886
The faculty make use of ICT enabled tools like Google classroom, LMS, NPTEL lectures and LCD projectors for better teaching learning experience.	0	1	4	26	879
The institution provides the students capability and skill enhancement programs at regular intervals.	1	3	11	17	878
Common rooms for boys and girls are available with adequate facilities.	0	3	5	28	874
Quality of the teaching by the faculty members and support extended by them towards the overall development of the students.	0	3	8	17	882
The conduct of examinations and evaluation system (both internal and external exams) is effective and transparent.	0	8	9	22	871
The quality of the food and hygiene maintenance in the hostel mess and canteen/cafeteria.	0	3	9	29	869



Dr. K. RAJAPPAN, Ph.D.
Principal
Mailam Engineering College
Mailam - 604 304, Villupuram (Dt.)



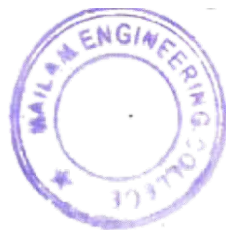
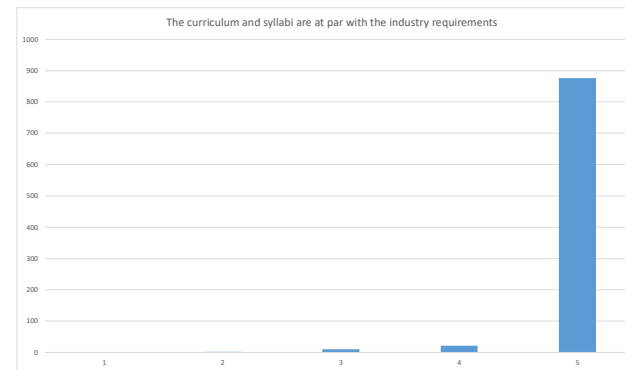
MAILAM ENGINEERING COLLEGE

(Approved by AICTE, New Delhi, Affiliated to Anna University Chennai
& Accredited by TATA Consultancy Services TCS, Accredited by NBA, New Delhi)

DEPARTMENT OF MECHANICAL ENGINEERING
Students Feedback Analysis report - Academic year:2017-2018

Date: 21.03.18

The curriculum and syllabi are at par with the industry requirements.



Dr. K. RAJAPPAN, Ph.D.
Principal
Mailam Engineering College
Mailam - 604 304, Villupuram (Dt.)



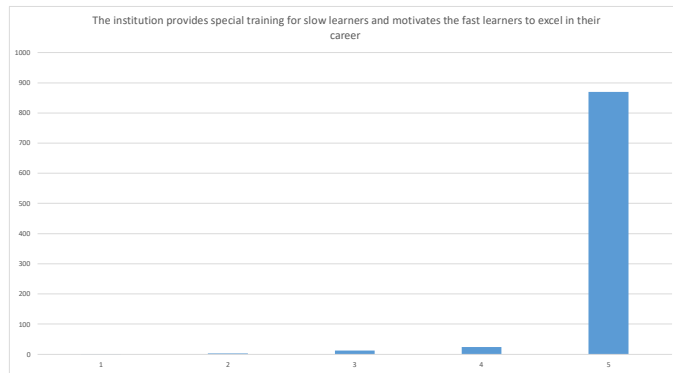
MAILAM ENGINEERING COLLEGE

(Approved by AICTE, New Delhi, Affiliated to Anna University Chennai
& Accredited by TATA Consultancy Services TCS, Accredited by NBA, New Delhi)

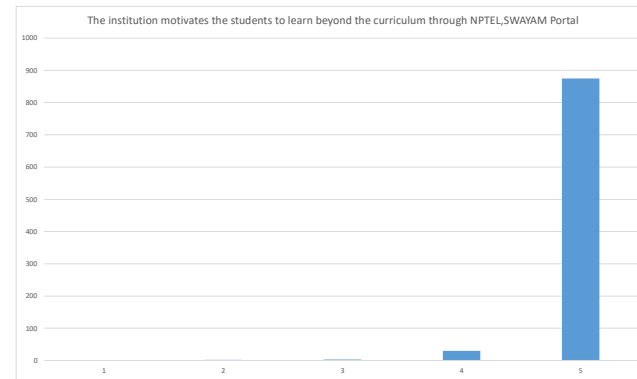
DEPARTMENT OF MECHANICAL ENGINEERING
Students Feedback Analysis report - Academic year:2017-2018

Date: 21.03.18

The institution provides special training for slow learners and motivates the fast learners to excel in their career.



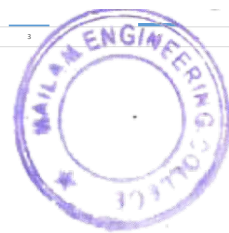
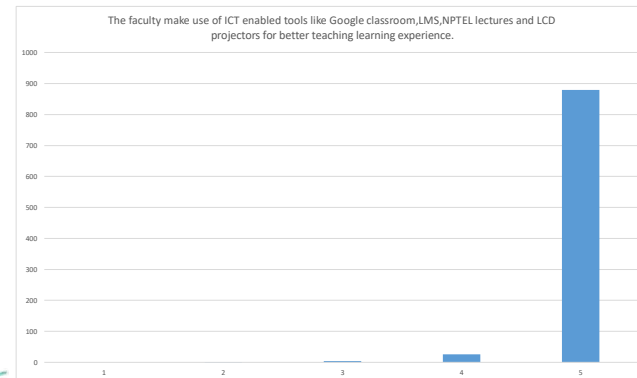
The institution motivates the students to learn beyond the curriculum through NPTEL, SWAYAM portal.



The classrooms, laboratories, library are spacious, well maintained and fully equipped with appropriate resources.



The faculty make use of ICT enabled tools like Google classroom, LMS, NPTEL lectures and LCD projectors for better teaching learning experience.



Dr. K. RAJAPPAN, Ph.D.
Principal
Mailam Engineering College
Mailam - 604 304, Villupuram (Dt.)



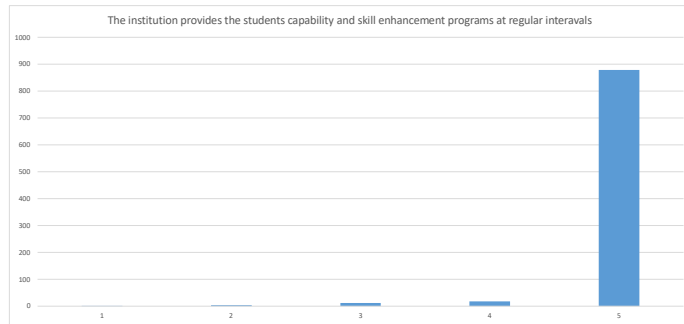
MAILAM ENGINEERING COLLEGE

(Approved by AICTE, New Delhi, Affiliated to Anna University Chennai
& Accredited by TATA Consultancy Services TCS, Accredited by NBA, New Delhi)

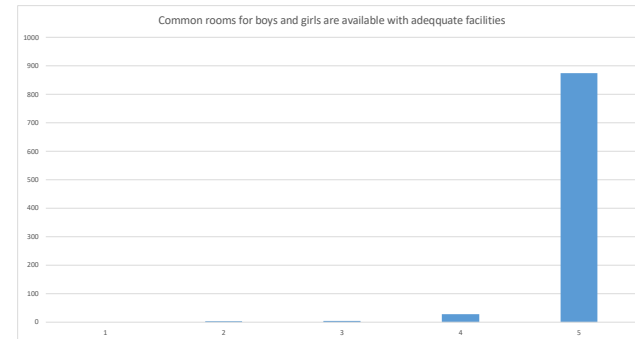
DEPARTMENT OF MECHANICAL ENGINEERING
Students Feedback Analysis report - Academic year:2017-2018

Date: 21.03.18

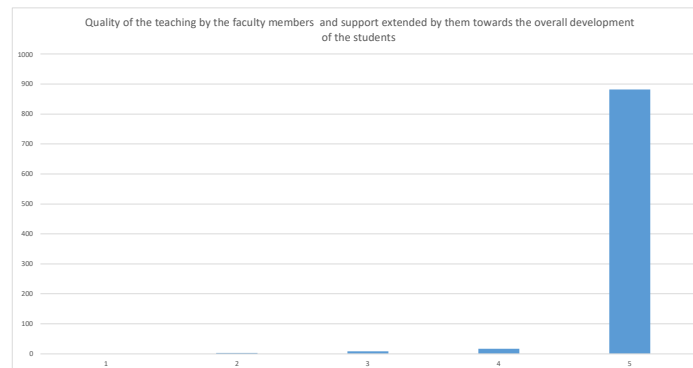
The institution provides the students capability and skill enhancement programs at regular intervals.



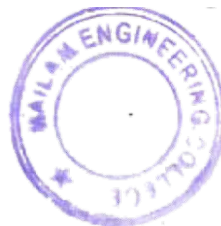
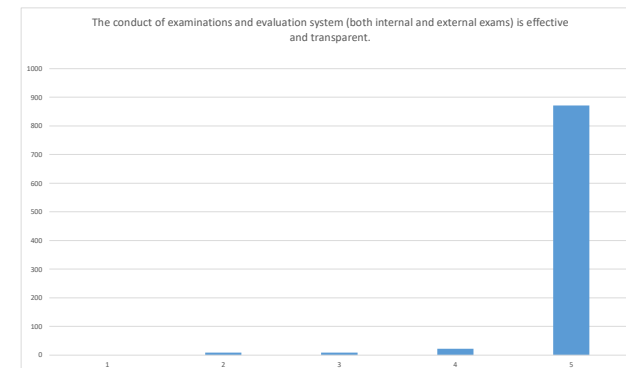
Common rooms for boys and girls are available with adequate facilities.



Quality of the teaching by the faculty members and support extended by them towards the overall development of the students.



The conduct of examinations and evaluation system (both internal and external exams) is effective and transparent.



Dr. K. RAJAPPAN, Ph.D.
Principal
Mailam Engineering College
Mailam - 604 304, Villupuram (Dt.)



MAILAM ENGINEERING COLLEGE


(Approved by AICTE, New Delhi, Affiliated to Anna University Chennai
& Accredited by TATA Consultancy Services TCS, Accredited by NBA, New Delhi)

DEPARTMENT OF MECHANICAL ENGINEERING
Students Feedback Analysis report - Academic year:2017-2018

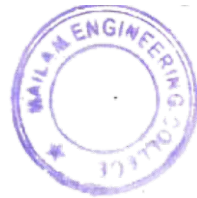
Date: 21.03.18

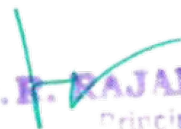
The quality of the food and hygiene maintenance in the hostel mess and canteen/cafeteria.




HOD


PRINCIPAL




Dr. K. RAJAPPAN, Ph.D.
Principal
Mailam Engineering College
Mailam - 604 304, Villupuram (DL)



MAILAM ENGINEERING COLLEGE

(Approved by AICTE, New Delhi, Affiliated to Anna University Chennai
& Accredited by TATA Consultancy Services TCS, Accredited by NBA, New Delhi)

DEPARTMENT OF MECHANICAL ENGINEERING

Students Feedback Analysis report - Academic year:2018-2019

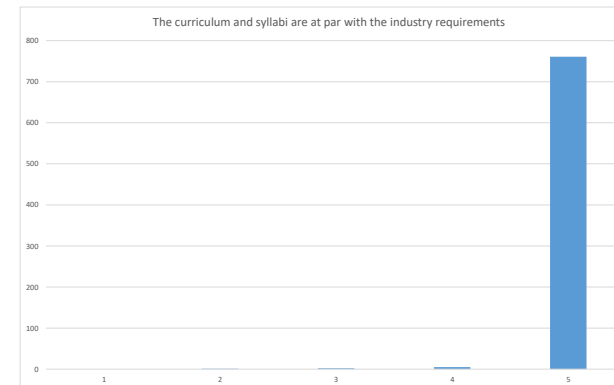
Date: 18.03.19

TOTAL FEEDBACK SUBMITTED

769

Questions	Number of students Marked-Poor	Number of students Marked-Fair	Number of students Marked-Good	Number of students Marked-Very Good	Number of students Marked - Excellent
The curriculum and syllabi are at par with the industry requirements.	0	1	2	5	761
The institution provides special training for slow learners and motivates the fast learners to excel in their ca	0	0	3	4	762
The institution motivates the students to learn beyond the curriculum through NPTEL, SWAYAM portal.	0	1	3	35	730
The classrooms, laboratories, library are spacious, well maintained and fully equipped with appropriate res	0	0	1	27	741
The faculty make use of ICT enabled tools like Google classroom, LMS, NPTEL lectures and LCD projectors for better teaching learning experience.	0	1	1	32	735
The institution provides the students capability and skill enhancement programs at regular intervals.	0	1	2	8	758
Common rooms for boys and girls are available with adequate facilities.	0	2	2	3	762
Quality of the teaching by the faculty members and support extended by them towards the overall development of the students.	0	1	1	2	765
The conduct of examinations and evaluation system (both internal and external exams) is effective and	0	0	2	4	763
The quality of the food and hygiene maintenance in the hostel mess and canteen/cafeateria.	0	2	4	18	745

The curriculum and syllabi are at par with the industry requirements.



[Handwritten Signature]

Dr. R. RAJAPPAN, Ph.D.
Principal
Mailam Engineering College
Mailam - 604 304, Villupuram (Dt.)



MAILAM ENGINEERING COLLEGE

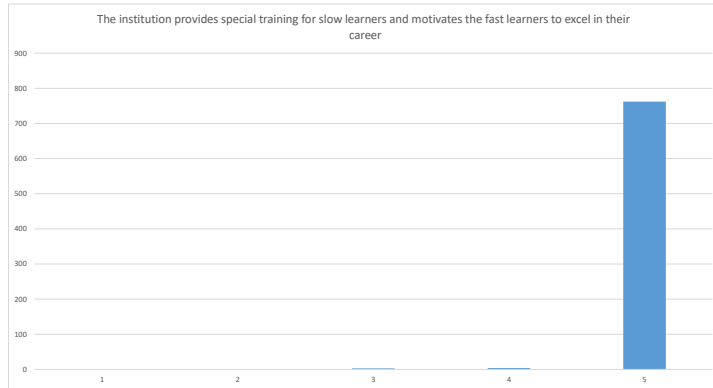
(Approved by AICTE, New Delhi, Affiliated to Anna University Chennai
& Accredited by TATA Consultancy Services TCS, Accredited by NBA, New Delhi)

DEPARTMENT OF MECHANICAL ENGINEERING

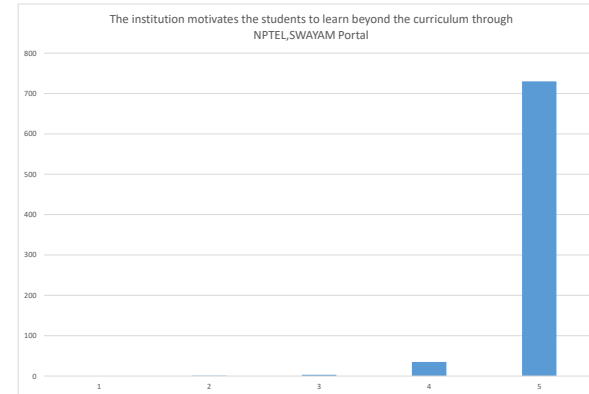
Students Feedback Analysis report - Academic year:2018-2019

Date: 18.03.19

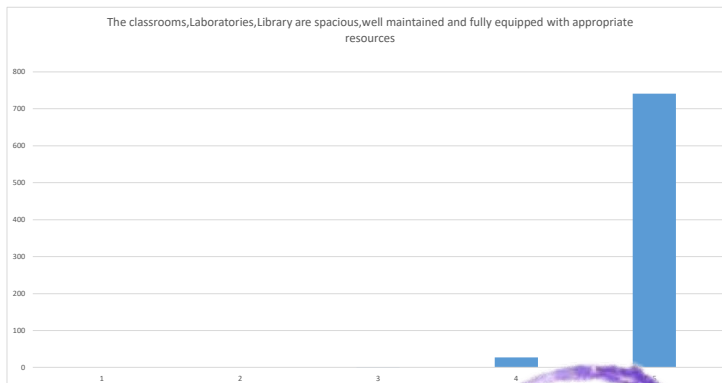
The institution provides special training for slow learners and motivates the fast learners to excel in their career.



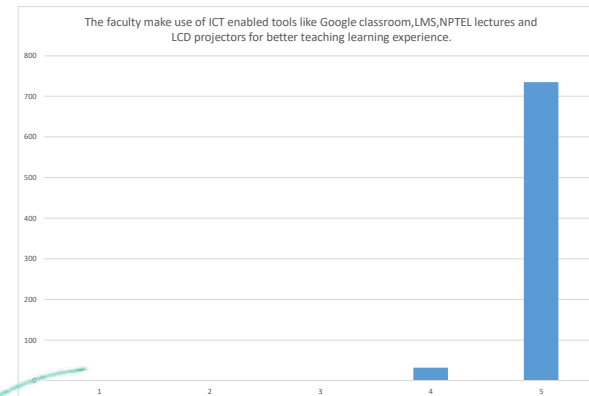
The institution motivates the students to learn beyond the curriculum through NPTEL, SWAYAM portal.



The classrooms, laboratories, library are spacious, well maintained and fully equipped with appropriate resources.



The faculty make use of ICT enabled tools like Google classroom, LMS, NPTEL lectures and LCD projectors for better teaching learning experience.



Dr. R. RAJAPPAN, Ph.D.
Principal
Mailam Engineering College
Mailam - 604 304, Villupuram (Dt.)



MAILAM ENGINEERING COLLEGE

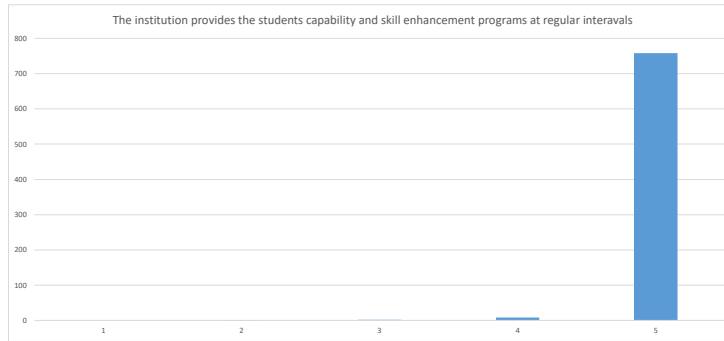
(Approved by AICTE, New Delhi, Affiliated to Anna University Chennai
& Accredited by TATA Consultancy Services TCS, Accredited by NBA, New Delhi)

DEPARTMENT OF MECHANICAL ENGINEERING

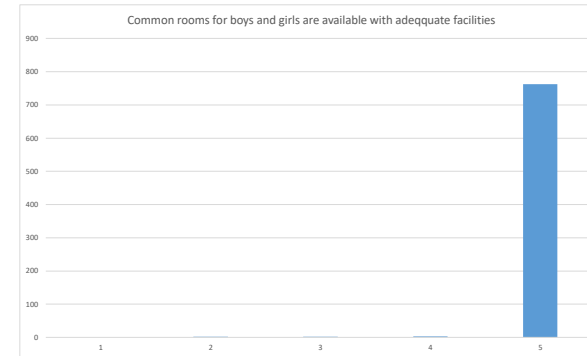
Students Feedback Analysis report - Academic year:2018-2019

Date: 18.03.19

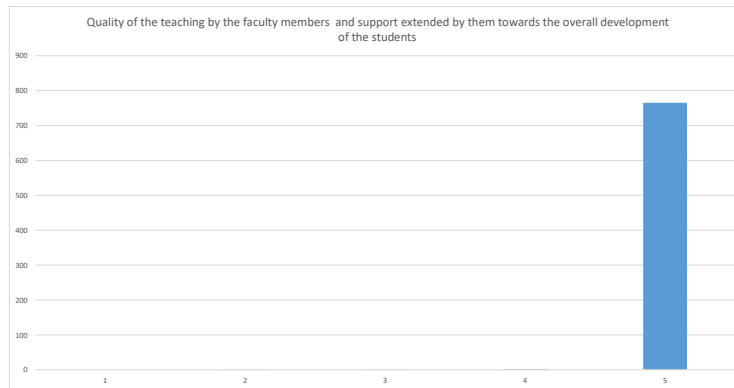
The institution provides the students capability and skill enhancement programs at regular intervals.



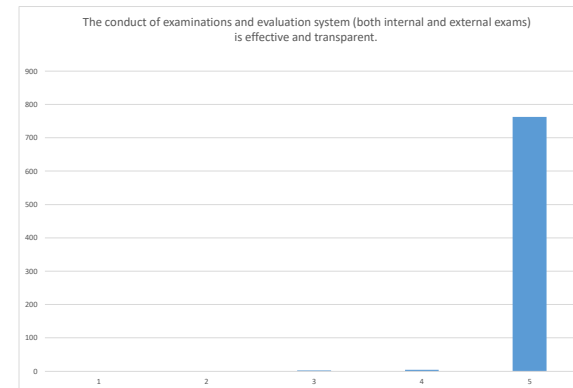
Common rooms for boys and girls are available with adequate facilities.



Quality of the teaching by the faculty members and support extended by them towards the overall development of the students.



The conduct of examinations and evaluation system (both internal and external exams) is effective and transparent.



[Handwritten Signature]
Dr. R. RAJAPPAN, Ph.D.
Principal
Mailam Engineering College
Mailam - 604 304, Villupuram (Dt.)



MAILAM ENGINEERING COLLEGE

(Approved by AICTE, New Delhi, Affiliated to Anna University Chennai
& Accredited by TATA Consultancy Services TCS, Accredited by NBA, New Delhi)


DEPARTMENT OF MECHANICAL ENGINEERING

Students Feedback Analysis report - Academic year:2018-2019

Date: 18.03.19

The quality of the food and hygiene maintenance in the hostel mess and canteen/cafeteria.




HoD


PRINCIPAL




Dr. R. RAJAPPAN, Ph.D.
Principal
Mailam Engineering College
Mailam - 604 304, Villupuram (Dt.)



MAILAM ENGINEERING COLLEGE

(Approved by AICTE, New Delhi, Affiliated to Anna University Chennai & Accredited by TATA Consultancy Services TCS, Accredited by NBA, New Delhi)

DEPARTMENT OF MECHANICAL ENGINEERING

Students Feedback Analysis report - Academic year:2019-2020

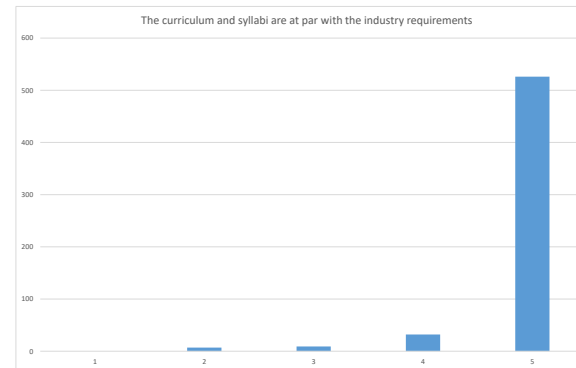
Date: 23.03.20

TOTAL FEEDBACK SUBMITTED

574

Questions	Number of students Marked-Poor	Number of students Marked-Fair	Number of students Marked-Good	Number of students Marked-Very Good	Number of students Marked-Excellent
The curriculum and syllabi are at par with the industry requirements.	0	7	9	32	526
The institution provides special training for slow learners and motivates the fast learners to excel in	0	6	6	31	531
The institution motivates the students to learn beyond the curriculum through NPTEL, SWAYAM po	0	2	8	34	530
The classrooms, laboratories, library are spacious, well maintained and fully equipped with appropr	0	3	10	32	529
The faculty make use of ICT enabled tools like Google classroom, LMS, NPTEL lectures and LCD projectors for better teaching learning experience.	0	10	14	31	519
The institution provides the students capability and skill enhancement programs at regular	0	7	17	34	516
Common rooms for boys and girls are available with adequate facilities.	0	6	8	27	533
Quality of the teaching by the faculty members and support extended by them towards the overall development of the students.	0	3	5	14	552
The conduct of examinations and evaluation system (both internal and external exams) is effective	0	5	8	31	530
The quality of the food and hygiene maintenance in the hostel mess and canteen/cafeteria.	0	7	11	19	537

The curriculum and syllabi are at par with the industry requirements.



Handwritten signature

Dr. R. RAJAPPAN, Ph.D.
Principal
Mailam Engineering College
Mailam - 604 304, Villupuram (Dt.)



MAILAM ENGINEERING COLLEGE

(Approved by AICTE, New Delhi, Affiliated to Anna University Chennai & Accredited by TATA Consultancy Services TCS, Accredited by NBA, New Delhi)

DEPARTMENT OF MECHANICAL ENGINEERING

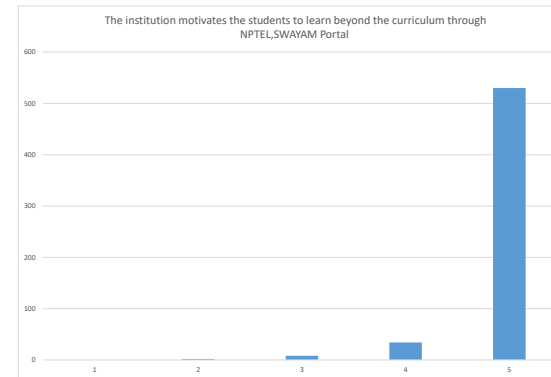
Students Feedback Analysis report - Academic year:2019-2020

Date: 23.03.20

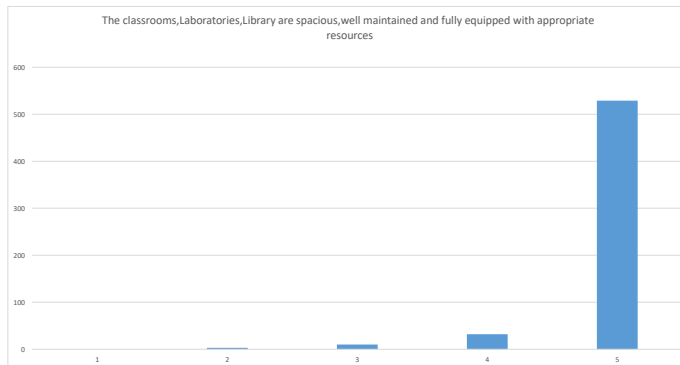
The institution provides special training for slow learners and motivates the fast learners to excel in their career.



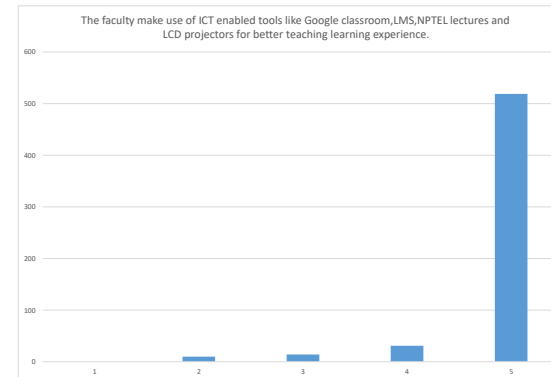
The institution motivates the students to learn beyond the curriculum through SWAYAM portal.



The classrooms, laboratories, library are spacious, well maintained and fully equipped with appropriate resources.



The faculty make use of ICT enabled tools like Google classroom, LMS, NPTEL lectures and LCD projectors for better teaching learning experience.




Dr. R. RAJAPPAN, Ph.D.
Principal
Mailam Engineering College
Mailam - 604 304, Villupuram (Ot.)



MAILAM ENGINEERING COLLEGE

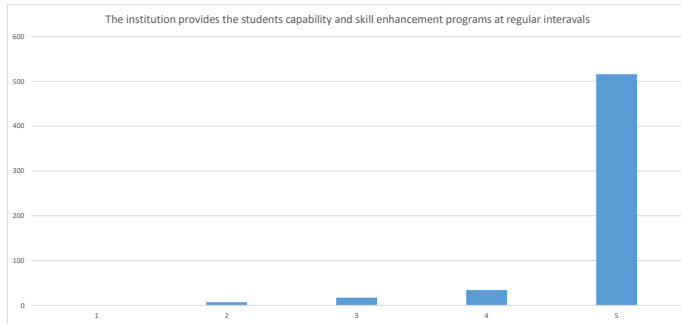
(Approved by AICTE, New Delhi, Affiliated to Anna University Chennai & Accredited by TATA Consultancy Services TCS, Accredited by NBA, New Delhi)

DEPARTMENT OF MECHANICAL ENGINEERING

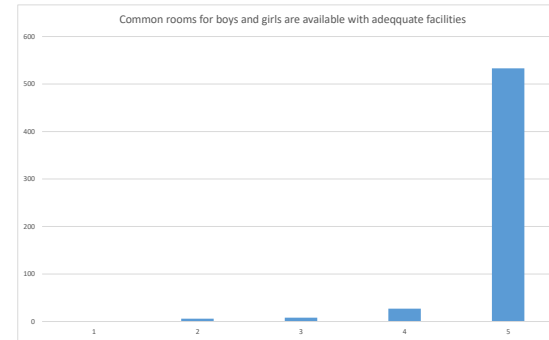
Students Feedback Analysis report - Academic year:2019-2020

Date: 23.03.20

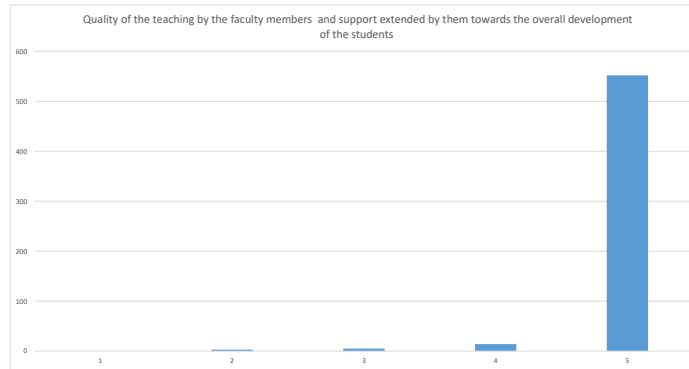
The institution provides the students capability and skill enhancement programs at regular intervals.



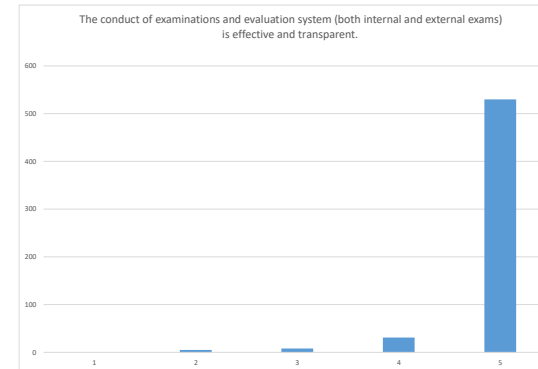
Common rooms for boys and girls are available with adequate facilities.



Quality of the teaching by the faculty members and support extended by them towards the overall development of the students.



The conduct of examinations and evaluation system (both internal and exams) is effective and transparent.



R. RAJAPPAN, Ph.D.
Principal
Mailam Engineering College
Mailam - 604 304, Villupuram (Dt.)



MAILAM ENGINEERING COLLEGE

(Approved by AICTE, New Delhi, Affiliated to Anna University Chennai
& Accredited by TATA Consultancy Services TCS, Accredited by NBA, New Delhi)


DEPARTMENT OF MECHANICAL ENGINEERING

Students Feedback Analysis report - Academic year:2019-2020

Date: 23.03.20

The quality of the food and hygiene maintenance in the hostel mess and canteen/cafeteria.




HoD


PRINCIPAL




Dr. R. RAJAPPAN, Ph.D.
Principal
Mailam Engineering College
Mailam - 604 304, Villupuram (Dt.)



MAILAM ENGINEERING COLLEGE

(Approved by AICTE, New Delhi, Affiliated to Anna University Chennai
& Accredited by TATA Consultancy Services TCS, Accredited by NBA, New Delhi)

DEPARTMENT OF MECHANICAL ENGINEERING

Students Feedback Analysis report - Academic year:2020-2021

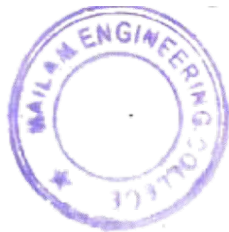
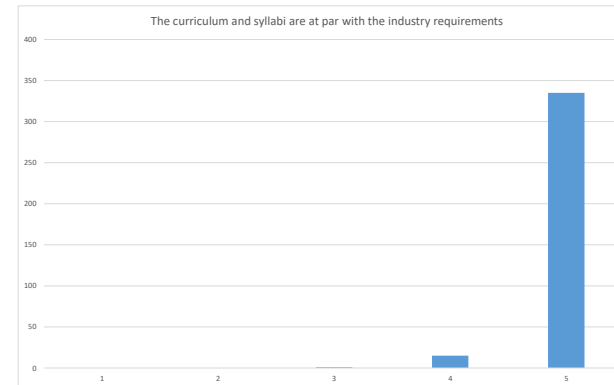
Date: 25.03.21

TOTAL FEEDBACK SUBMITTED

351

Questions	Number of students Marked-Poor	Number of students Marked-Fair	Number of students Marked-Good	Number of students Marked-Very Good	Number of students Marked-Excellent
The curriculum and syllabi are at par with the industry requirements.	0	0	1	15	335
The institution provides special training for slow learners and motivates the fast learners to excel in their ca	0	1	4	18	328
The institution motivates the students to learn beyond the curriculum through NPTEL, SWAYAM portal.	0	1	3	7	340
The classrooms, laboratories, library are spacious, well maintained and fully equipped with appropriate res	0	3	8	15	325
The faculty make use of ICT enabled tools like Google classroom, LMS, NPTEL lectures and LCD projectors for better teaching learning experience.	0	2	9	18	322
The institution provides the students capability and skill enhancement programs at regular intervals.	0	2	2	21	326
Common rooms for boys and girls are available with adequate facilities.	0	0	1	8	342
Quality of the teaching by the faculty members and support extended by them towards the overall development of the students.	0	0	3	7	341
The conduct of examinations and evaluation system (both internal and external exams) is effective and	0	3	3	5	340
The quality of the food and hygiene maintenance in the hostel mess and canteen/cafeteria.	0	1	2	6	342

The curriculum and syllabi are at par with the industry requirements.



Dr. K. RAJAPPAN, Ph.D.
Principal
Mailam Engineering College
Mailam - 604 304, Villupuram (Dt.)



MAILAM ENGINEERING COLLEGE

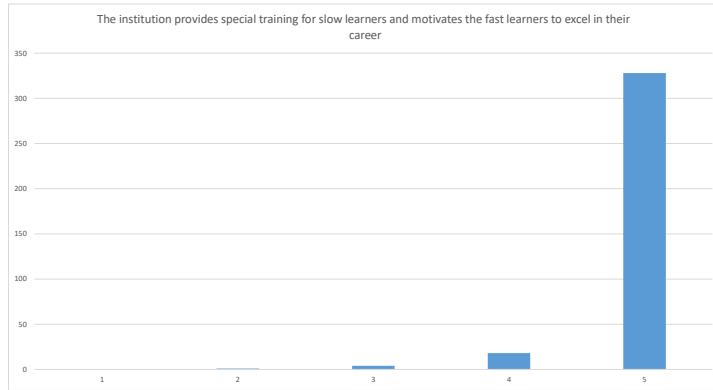
(Approved by AICTE, New Delhi, Affiliated to Anna University Chennai
& Accredited by TATA Consultancy Services TCS, Accredited by NBA, New Delhi)

DEPARTMENT OF MECHANICAL ENGINEERING

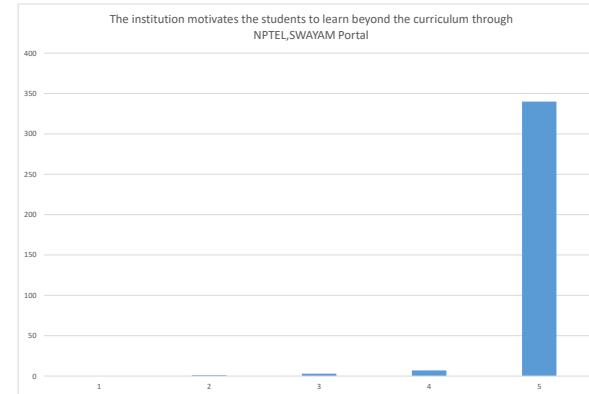
Students Feedback Analysis report - Academic year:2020-2021

Date: 25.03.21

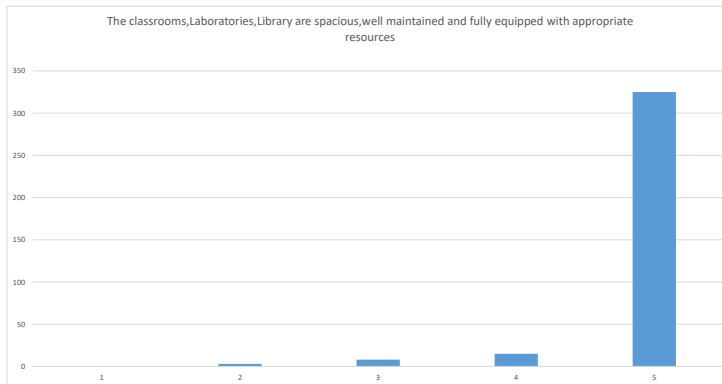
The institution provides special training for slow learners and motivates the fast learners to excel in their career.



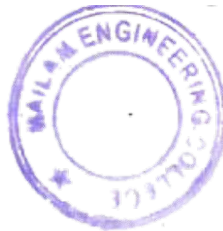
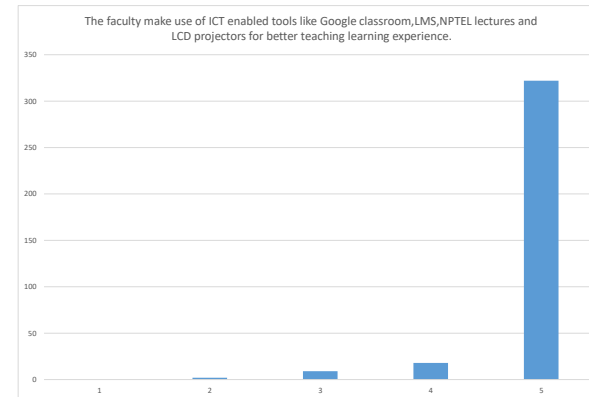
The institution motivates the students to learn beyond the curriculum through NPTEL, SWAYAM portal.



The classrooms, laboratories, library are spacious, well maintained and fully equipped with appropriate resources.



The faculty make use of ICT enabled tools like Google classroom, LMS, NPTEL lectures and LCD projectors for better teaching learning experience.



Dr. K. RAJAPPAN, Ph.D.
Principal
Mailam Engineering College
Mailam - 604 304, Villupuram (Dt.)



MAILAM ENGINEERING COLLEGE

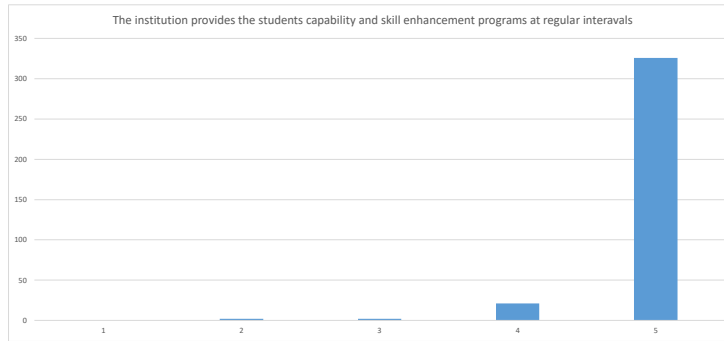
(Approved by AICTE, New Delhi, Affiliated to Anna University Chennai
& Accredited by TATA Consultancy Services TCS, Accredited by NBA, New Delhi)

DEPARTMENT OF MECHANICAL ENGINEERING

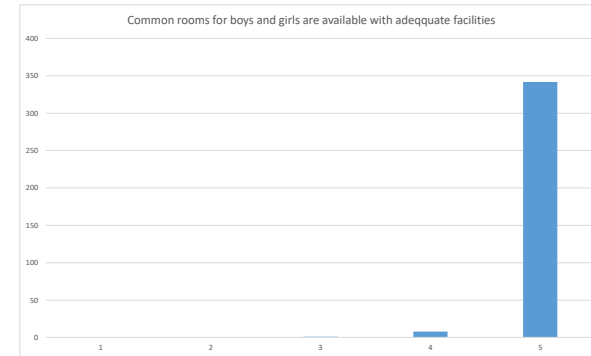
Students Feedback Analysis report - Academic year:2020-2021

Date: 25.03.21

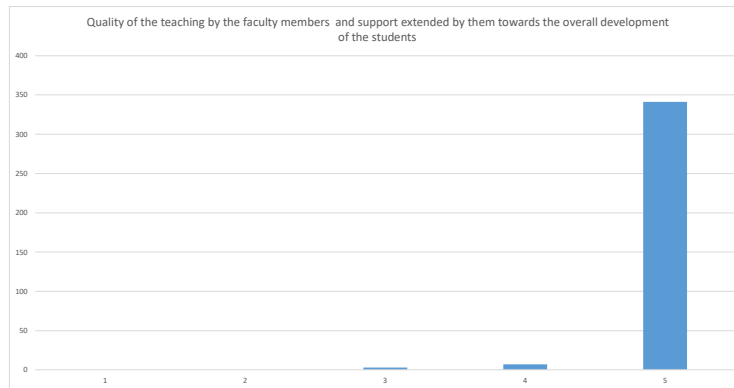
The institution provides the students capability and skill enhancement programs at regular intervals.



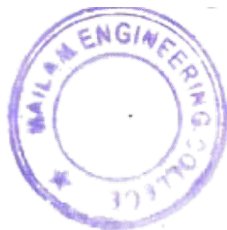
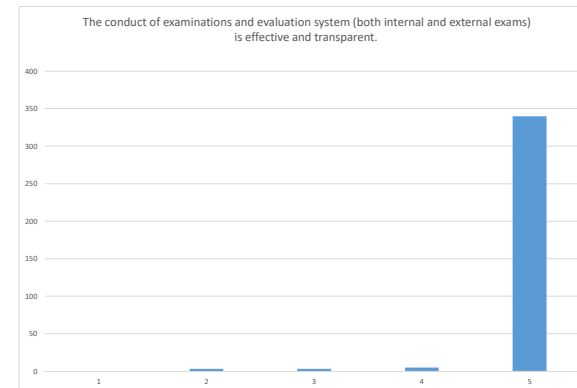
Common rooms for boys and girls are available with adequate facilities.



Quality of the teaching by the faculty members and support extended by them towards the overall development of the students.



The conduct of examinations and evaluation system (both internal and external exams) is effective and transparent.



Dr. K. RAJAPPAN, Ph.D.
Principal
Mailam Engineering College
Mailam - 604 304, Villupuram (Dt.)



MAILAM ENGINEERING COLLEGE

(Approved by AICTE, New Delhi, Affiliated to Anna University Chennai
& Accredited by TATA Consultancy Services TCS, Accredited by NBA, New Delhi)

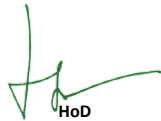
DEPARTMENT OF MECHANICAL ENGINEERING

Students Feedback Analysis report - Academic year:2020-2021

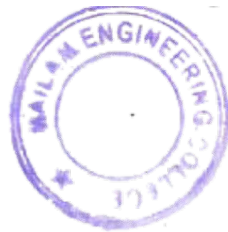
Date: 25.03.21


The quality of the food and hygiene maintenance in the hostel mess and canteen/cafeteria.




HoD


PRINCIPAL




Dr. K. RAJAPPAN, Ph.D.
Principal
Mailam Engineering College
Mailam - 604 394, Villupuram (Dt.)



MAILAM ENGINEERING COLLEGE

(Approved by AICTE, New Delhi, Affiliated to Anna University Chennai
& Accredited by TATA Consultancy Services TCS, Accredited by NBA, New Delhi)

DEPARTMENT OF MECHANICAL ENGINEERING

Students Feedback Analysis report - Academic year:2021-2022

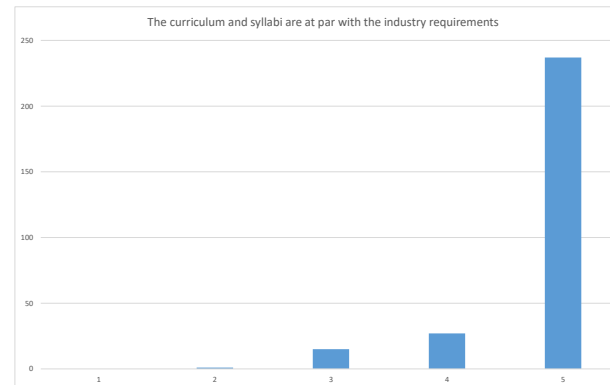
Date: 22.03.22

TOTAL FEEDBACK SUBMITTED

280

Questions	Number of students Marked-Poor	Number of students Marked-Fair	Number of students Marked-Good	Number of students Marked-Very Good	Number of students Marked-Excellent
The curriculum and syllabi are at par with the industry requirements.	0	1	15	27	237
The institution provides special training for slow learners and motivates the fast learners to excel in their course.	0	1	3	28	248
The institution motivates the students to learn beyond the curriculum through NPTEL, SWAYAM portal.	0	4	15	31	230
The classrooms, laboratories, library are spacious, well maintained and fully equipped with appropriate resources.	0	2	3	18	257
The faculty make use of ICT enabled tools like Google classroom, LMS, NPTEL lectures and LCD projectors for better teaching learning experience.	0	3	10	24	243
The institution provides the students capability and skill enhancement programs at regular intervals.	0	1	7	27	245
Common rooms for boys and girls are available with adequate facilities.	0	0	0	15	265
Quality of the teaching by the faculty members and support extended by them towards the overall development of the students.	0	0	1	9	270
The conduct of examinations and evaluation system (both internal and external exams) is effective and efficient.	0	1	1	8	270
The quality of the food and hygiene maintenance in the hostel mess and canteen/cafeteria.	0	4	17	21	238

The curriculum and syllabi are at par with the industry requirements.



R. RAJAPPAN, Ph.D.
Principal
Mailam Engineering College
Mailam - 604 304, Villupuram (Dt.)



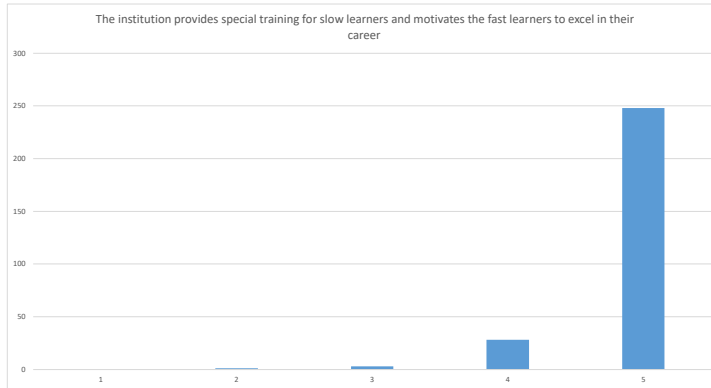
MAILAM ENGINEERING COLLEGE

(Approved by AICTE, New Delhi, Affiliated to Anna University Chennai
& Accredited by TATA Consultancy Services TCS, Accredited by NBA, New Delhi)

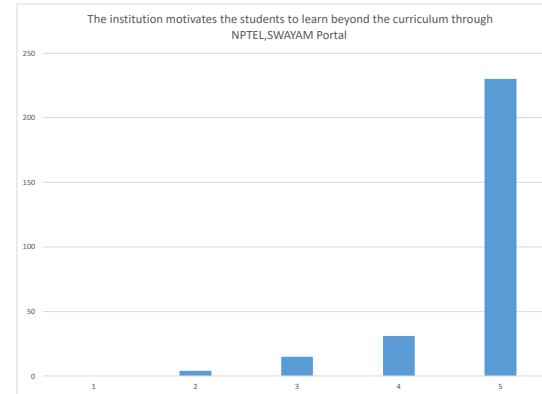
DEPARTMENT OF MECHANICAL ENGINEERING
Students Feedback Analysis report - Academic year:2021-2022

Date: 22.03.22

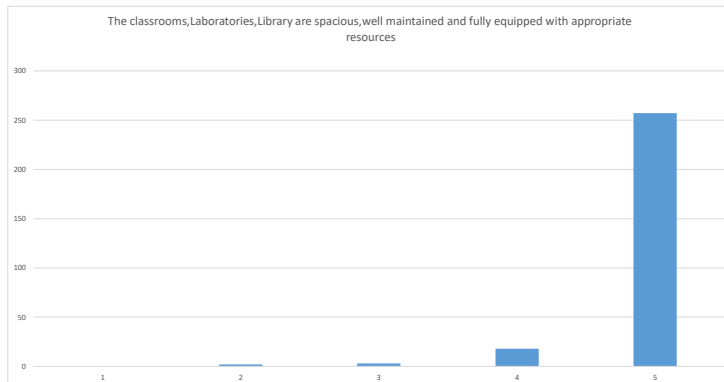
The institution provides special training for slow learners and motivates the fast learners to excel in their career.



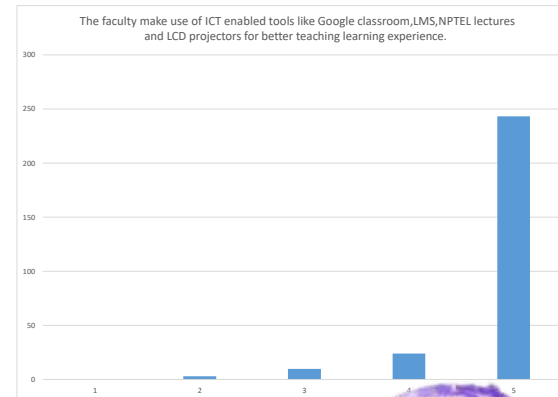
The institution motivates the students to learn beyond the curriculum through NPTEL, SWAYAM portal.



The classrooms, laboratories, library are spacious, well maintained and fully equipped with appropriate resources.



The faculty make use of ICT enabled tools like Google classroom, LMS, NPTEL lectures and LCD projectors for better teaching learning experience.




Dr. R. RAJAPPAN, Ph.D.
Principal
Mailam Engineering College
Mailam - 604 304, Villupuram (Ot.)



MAILAM ENGINEERING COLLEGE

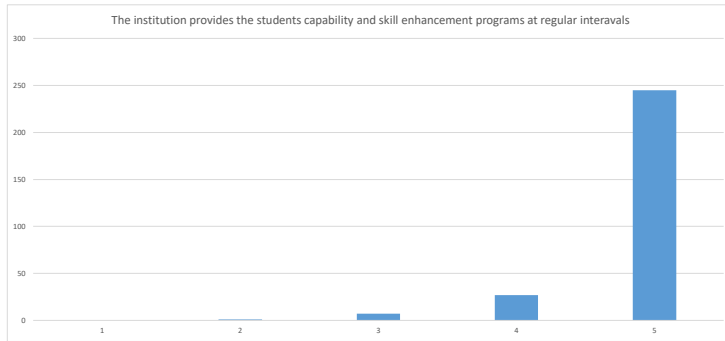
(Approved by AICTE, New Delhi, Affiliated to Anna University Chennai
& Accredited by TATA Consultancy Services TCS, Accredited by NBA, New Delhi)

DEPARTMENT OF MECHANICAL ENGINEERING

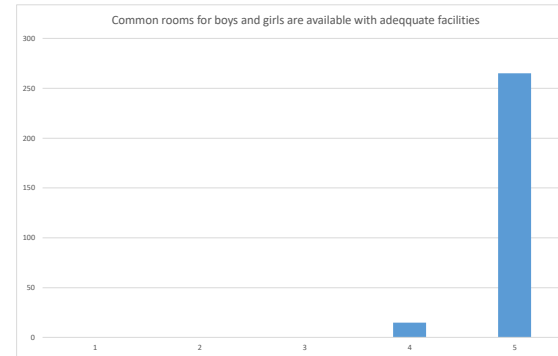
Students Feedback Analysis report - Academic year:2021-2022

Date: 22.03.22

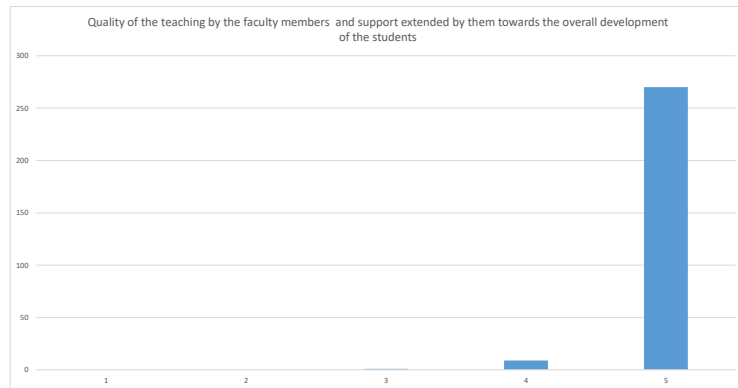
The institution provides the students capability and skill enhancement programs at regular intervals.



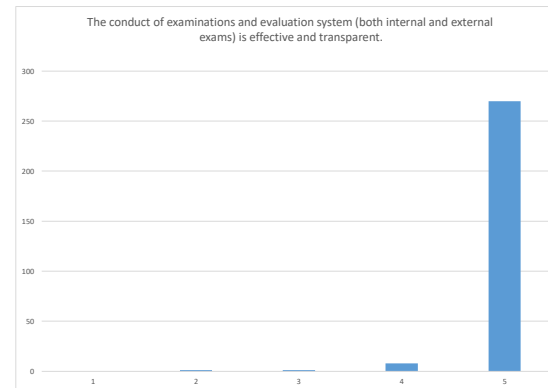
Common rooms for boys and girls are available with adequate facilities.



Quality of the teaching by the faculty members and support extended by them towards the overall development of the students.



The conduct of examinations and evaluation system (both internal and external exams) is effective and transparent.



Dr. R. RAJAPPAN, Ph.D.
Principal
Mailam Engineering College
Mailam - 604 304, Villupuram (Dt.)



MAILAM ENGINEERING COLLEGE

(Approved by AICTE, New Delhi, Affiliated to Anna University Chennai
& Accredited by TATA Consultancy Services TCS, Accredited by NBA, New Delhi)


DEPARTMENT OF MECHANICAL ENGINEERING

Students Feedback Analysis report - Academic year:2021-2022

Date: 22.03.22

The quality of the food and hygiene maintenance in the hostel mess and canteen/cafeteria.




HoD


PRINCIPAL





Dr. R. RAJAPPAN, Ph.D.
Principal
Mailam Engineering College
Mailam - 604 304, Villupuram (Dt.)



Mailam Engineering College

(Approved by AICTE, New Delhi, affiliated to Anna University Chennai & Accredited by NBA & TATA Consultancy Services)

ACTION TAKEN REPORT ON STAKEHOLDERS FEEDBACK ACADEMIC PERFORMANCE AND AMBIENCE


ACADEMIC YEAR: 2017-2018

S.NO	PROGRAM	STAKEHOLDER	ACTION REQUIRED	ACTION PROPOSED	ACTION TAKEN
1	B.E/MECH	STUDENTS	Need for job-oriented courses, training for facing interviews and career guidance by experts.	Instructions were circulated to Placement officer through Principal	New job-oriented courses & training was introduced; Training & courses for interview skills were organized by placement cell


HOD


PRINCIPAL




Dr. R. RAJAPPAN, Ph.D.
Principal
Mailam Engineering College
Mailam - 604 304, Villupuram (Dt.)



Mailam Engineering College

(Approved by AICTE, New Delhi, affiliated to Anna University Chennai & Accredited by NBA & TATA Consultancy Services)

ACTION TAKEN REPORT ON STAKEHOLDERS FEEDBACK ACADEMIC PERFORMANCE AND AMBIENCE


ACADEMIC YEAR: 2018-2019

S.NO	PROGRAM /BRANCH	STAKEHOLDER	ACTION REQUIRED	ACTION PROPOSED	ACTION TAKEN
1	B.E/MECH	STUDENTS	Exposure to latest developments and advances should be known to the students	Necessary action taken by HoD	Experts were invited to share their Knowledge to our faculty and students. This helped them to interact with the resource persons and was motivated to do higher studies and take up jobs which has challenging future ahead.


HOD


PRINCIPAL




Dr. R. RAJAPPAN, Ph.D.
Principal
Mailam Engineering College
Mailam - 604 304, Villupuram (Dt.)



Mailam Engineering College

(Approved by AICTE, New Delhi, affiliated to Anna University Chennai & Accredited by NBA & TATA Consultancy Services)


ACTION TAKEN REPORT ON STAKEHOLDERS FEEDBACK ACADEMIC PERFORMANCE AND AMBIENCE ACADEMIC YEAR: 2019-2020

S.NO	PROGRAM /BRANCH	STAKEHOLDER	ACTION REQUIRED	ACTION PROPOSED	ACTION TAKEN
1	B.E/MECH	STUDENTS	Wanted to strengthen communication skill	Placement cell and IQAC noted and action taken	Maintained language of instructions and made them participate in academic related programmes that helped them improve their communication skill


HOD


PRINCIPAL




Dr. R. RAJAPPAN, Ph.D.
Principal
Mailam Engineering College
Mailam - 604 304, Villupuram (Dt.)



Mailam Engineering College

(Approved by AICTE, New Delhi, affiliated to Anna University Chennai & Accredited by NBA & TATA Consultancy Services)

ACTION TAKEN REPORT ON STAKEHOLDERS FEEDBACK ACADEMIC PERFORMANCE AND AMBIENCE

ACADEMIC YEAR: 2020-2021

S.NO	PROGRAM /BRANCH	STAKEHOLDER	ACTION REQUIRED	ACTION PROPOSED	ACTION TAKEN
1	B.E/MECH	STUDENTS	More Co-Curricular activities that should include latest trends in technology are required	Taken into respective coordinators through HoD	Special Workshops with hands on sessions done periodically to address this.


HOD


PRINCIPAL



Dr. R. RAJAPPAN, Ph.D.
Principal
Mailam Engineering College
Mailam - 604 304, Villupuram (Dt.)

Mailam Engineering College

(Approved by AICTE, New Delhi, affiliated to Anna University Chennai & Accredited by NBA & TATA Consultancy Services)



ACTION TAKEN REPORT ON STAKEHOLDERS FEEDBACK ACADEMIC PERFORMANCE AND AMBIENCE ACADEMIC YEAR: 2021-2022

S.NO	PROGRAM /BRANCH	STAKEHOLDER	ACTION REQUIRED	ACTION PROPOSED	ACTION TAKEN
1	B.E/MECH	STUDENTS	Strengthening of extracurricular activities	Formal instructions were circulated to the authority to ensure the conduct of interdepartmental arts and sports competitions.	Department exhibitions, conferences, interdepartmental competitions, etc. facilitated the expressions of varied talents inherent in students, taking into consideration the individual differences in abilities and aptitudes.


HOD


PRINCIPAL



Dr. R. RAJAPPAN, Ph.D.
Principal
Mailam Engineering College
Mailam - 604 304, Villupuram (Dt.)