



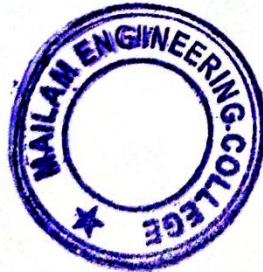
MAILAM ENGINEERING COLLEGE
(Approved by AICTE, New Delhi, Affiliated to Anna University Chennai
(Accredited by NBA, New Delhi & Accredited by TATA Consultancy Services TCS, Chennai)
DEPARTMENT OF ELECTRONICS AND COMMUNICATION ENGINEERING
Students Feedback Analysis report - Academic year:2022-2023

Date: 20.03.23

TOTAL FEEDBACK SUBMITTED

380

| Questions | Number of students Marked-Poor | Number of students Marked-Fair | Number of students Marked-Good | Number of students Marked-Very Good | Number of students Marked-Excellent |
|--------------------------------------------------------------------------------------------------------------------------------------------------|--------------------------------|--------------------------------|--------------------------------|-------------------------------------|-------------------------------------|
| The curriculum and syllabi are at par with the industry requirements. | 0 | 2 | 14 | 28 | 336 |
| The institution provides special training for slow learners and motivates the fast learners to excel in their career. | 0 | 2 | 2 | 25 | 351 |
| The institution motivates the students to learn beyond the curriculum through NPTEL, SWAYAM portal. | 0 | 5 | 14 | 30 | 331 |
| The classrooms, laboratories, library are spacious, well maintained and fully equipped with appropriate resources. | 0 | 3 | 2 | 19 | 356 |
| The faculty make use of ICT enabled tools like Google classroom, LMS, NPTEL lectures and LCD projectors for better teaching learning experience. | 0 | 4 | 9 | 23 | 344 |
| The institution provides the students capability and skill enhancement programs at regular intervals. | 0 | 2 | 6 | 26 | 346 |
| Common rooms for boys and girls are available with adequate facilities. | 0 | 0 | 0 | 14 | 366 |
| Quality of the teaching by the faculty members and support extended by them towards the overall development of the students. | 0 | 1 | 0 | 8 | 371 |
| The conduct of examinations and evaluation system (both internal and external exams) is effective and transparent. | 0 | 2 | 0 | 7 | 371 |
| The quality of the food and hygiene maintenance in the hostel mess and canteen/cafeteria. | 0 | 5 | 18 | 20 | 337 |



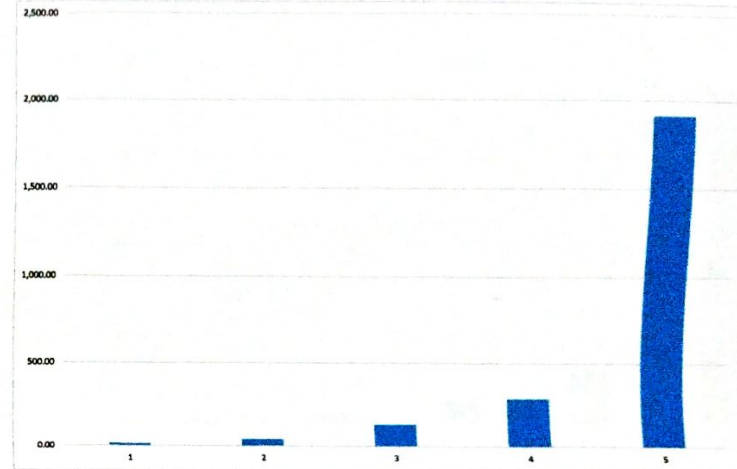

Dr. R. RAJAPPAN, Ph.D.
Principal
Mailam Engineering College
Mailam - 604 304, Villupuram (Dt.)



MAILAM ENGINEERING COLLEGE
 (Approved by AICTE, New Delhi, Affiliated to Anna University Chennai
 (Accredited by NBA, New Delhi & Accredited by TATA Consultancy Services TCS, Chennai)
 DEPARTMENT OF ELECTRONICS AND COMMUNICATION ENGINEERING
 Students Feedback Analysis report - Academic year:2022-2023

12

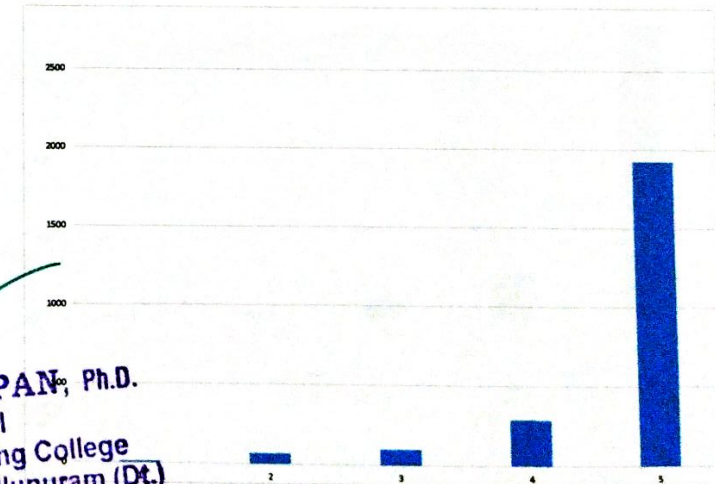
The curriculum and syllabi are at par with the industry requirements.



The institution provides special training for slow learners and motivates the fast learners to excel in their career.



The institution motivates the students to learn beyond the curriculum NPTEL, SWAYAM portal.



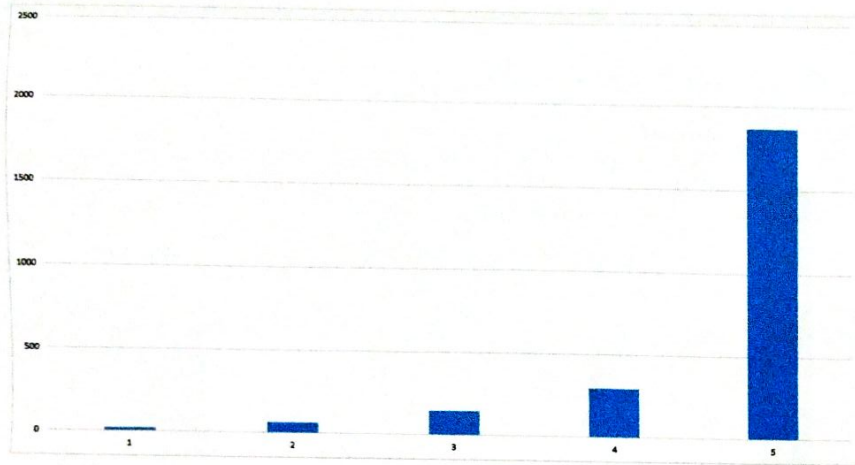
Dr. R. RAJAPPAN, Ph.D.
 Principal
 Mailam Engineering College
 Mailam - 604 304, Villupuram (Dt.)

The classrooms, laboratories, library are spacious, well maintained and fully equipped with appropriate resources.

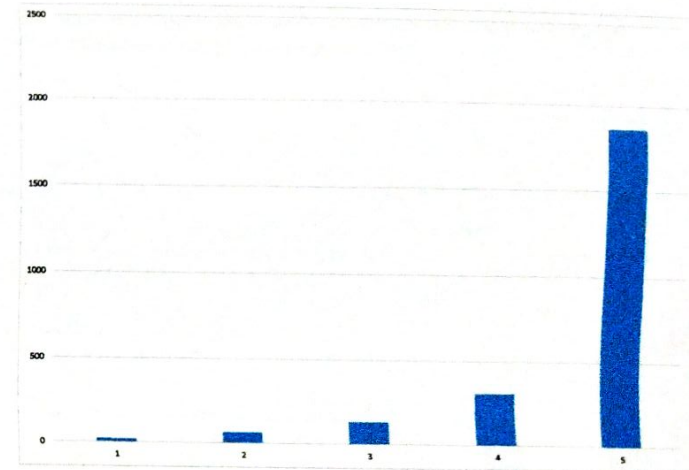
The faculty make use of ICT enabled tools like Google classroom, LMS, NPTEL lectures and LCD projectors for better teaching learning experience.



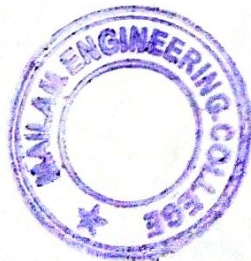
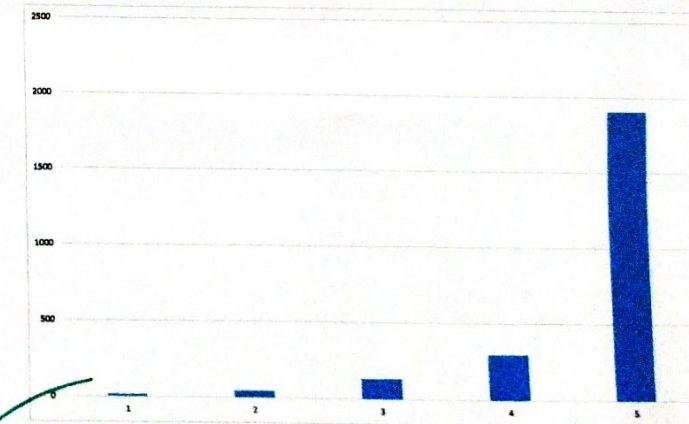
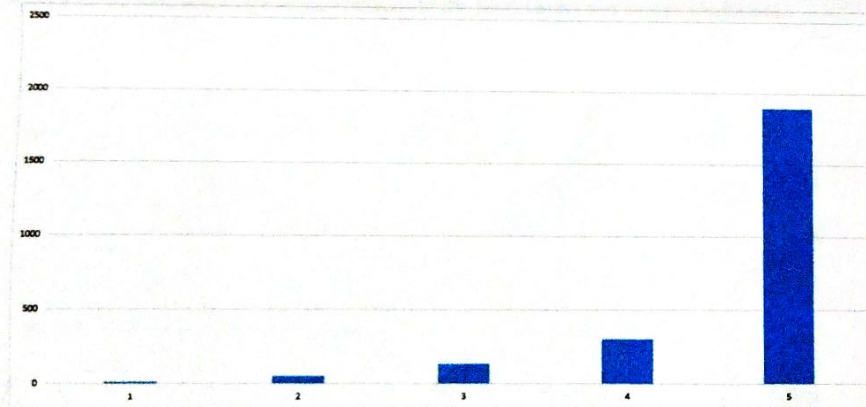
MAILAM ENGINEERING COLLEGE
(Approved by AICTE, New Delhi, Affiliated to Anna University Chennai
(Accredited by NBA, New Delhi & Accredited by TATA Consultancy Services TCS, Chennai)
DEPARTMENT OF ELECTRONICS AND COMMUNICATION ENGINEERING
Students Feedback Analysis report - Academic year:2022-2023



The institution provides the students capability and skill enhancement programs at regular intervals.



Common rooms for boys and girls are available with adequate facilities.



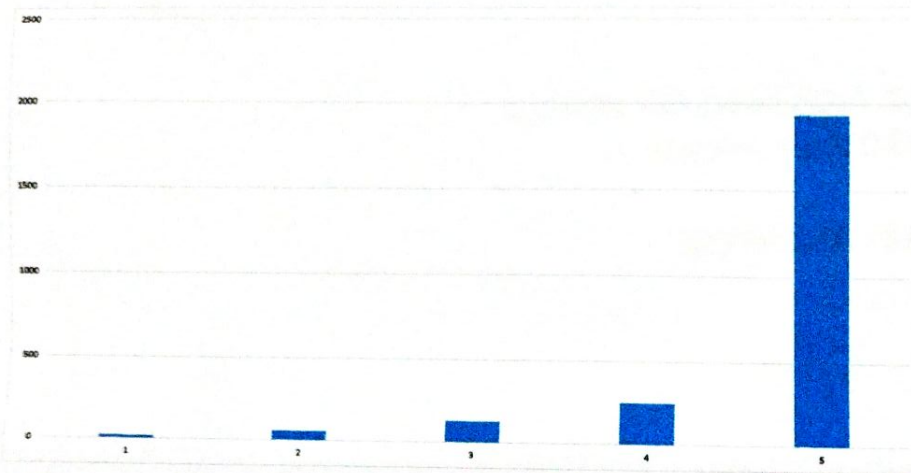
Dr. R. RAJAPPAN, Ph.D.
Principal
Mailam Engineering College
Mailam - 604 304, Villupuram (Dt.)



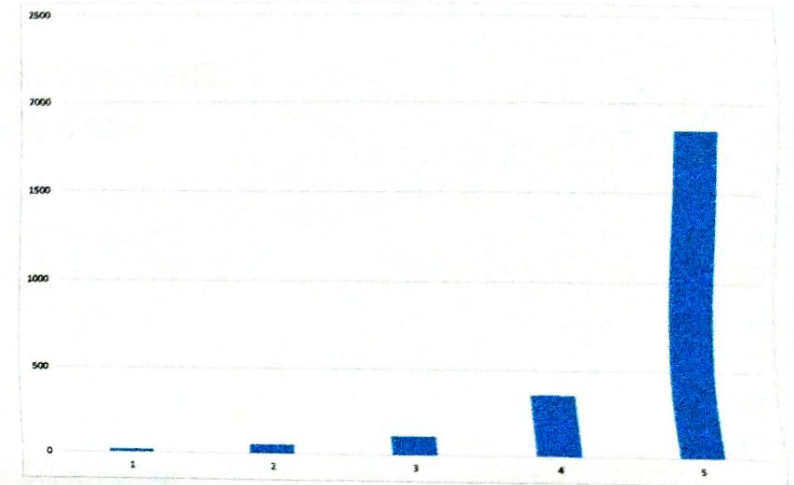
MAILAM ENGINEERING COLLEGE

(Approved by AICTE, New Delhi, Affiliated to Anna University Chennai
(Accredited by NBA, New Delhi & Accredited by TATA Consultancy Services TCS, Chennai)
DEPARTMENT OF ELECTRONICS AND COMMUNICATION ENGINEERING
Students Feedback Analysis report - Academic year:2022-2023

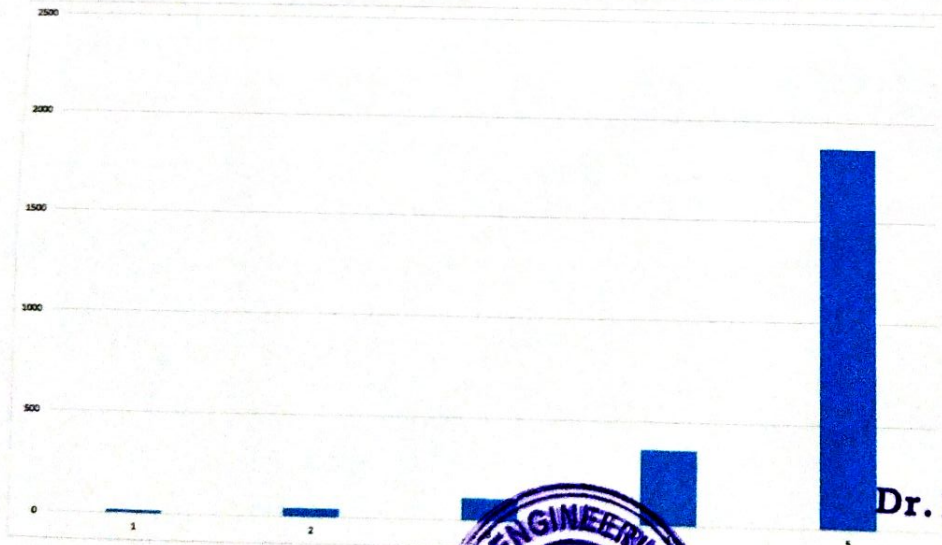
Quality of the teaching by the faculty members and support extended by them towards the overall development of the students.



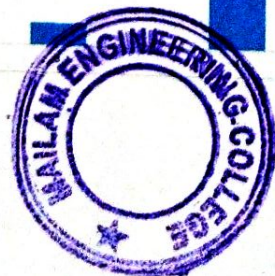
The conduct of examinations and evaluation system (both internal and external exams) is effective and transparent.



The quality of the food and hygiene maintenance in the hostel mess and canteen/cafeteria.




HOD




Dr. R. RAJAPPAN, Ph.D.
Principal
Mailam Engineering College
Mailam - 604 304, Villupuram (Dt.)


Principal



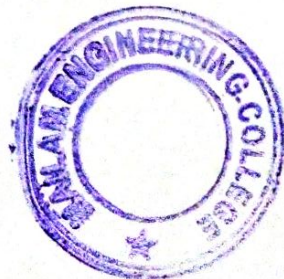
Mailam Engineering College
(Approved by AICTE, New Delhi, Affiliated to Anna University Chennai & Accredited by NBA & TCS)
Department of Electronics and Communication Engineering

**ACTION TAKEN REPORT ON STAKEHOLDERS FEEDBACK
ACADEMIC PERFORMANCE AND AMBIENCE**

ACADEMIC YEAR: 2022- 2023

| S.NO | PROGRAM /BRANCH | STAKE HOLDER | FEEDBACK QUESTIONS | RECOMMENDATION | ACTION TAKEN |
|------|-----------------|--------------|-------------------------------------------------------------------------------------|------------------------------------------------------------------------------------------|------------------------------------------------------------------------------------------------------------------------------------------------------------------------------------------------------------------|
| 1 | B.E/ECE | STUDENTS | More number of Technical event & competitions needed to promote technically strong. | HoD consider this an important for students growth and conveyed the message to principal | Comparing last year this year number of technical events & competitions such as seminar, workshop, Alumni talk, Debate, Quiz, Group discussion conducted and distributed certificate and cash prize to students. |


HoD




Dr. R. RAJAPPAN, Ph.D.
Principal
Mailam Engineering College
Mailam - 604 304, Villupuram (Dt.)


PRINCIPAL