



MAILAM ENGINEERING COLLEGE

(Approved by AICTE, New Delhi, Affiliated to Anna University Chennai
& Accredited by TATA Consultancy Services TCS, Accredited by NBA, New Delhi)

DEPARTMENT OF MECHANICAL ENGINEERING

Students Feedback Analysis report - Academic year:2022-2023

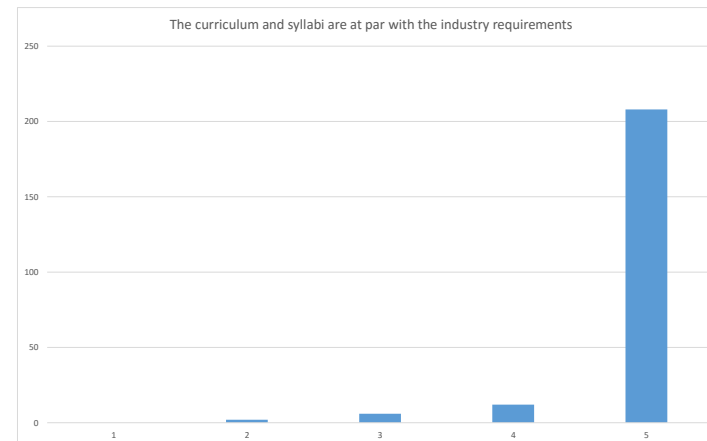
Date: 20.03.23

TOTAL FEEDBACK SUBMITTED

228

Questions	Number of students Marked-Poor	Number of students Marked-Fair	Number of students Marked-Good	Number of students Marked-Very Good	Number of students Marked-Excellent
The curriculum and syllabi are at par with the industry requirements.	0	2	6	12	208
The institution provides special training for slow learners and motivates the fast learners to excel in their career.	1	2	4	15	206
The institution motivates the students to learn beyond the curriculum through NPTEL, SWAYAM portal.	0	1	6	17	204
The classrooms, laboratories, library are spacious, well maintained and fully equipped with appropriate resources.	0	3	7	20	198
The faculty make use of ICT enabled tools like Google classroom, LMS, NPTEL lectures and LCD projectors for better teaching learning experience.	0	2	4	10	212
The institution provides the students capability and skill enhancement programs at regular intervals.	0	4	10	13	201
Common rooms for boys and girls are available with adequate facilities.	0	0	7	14	207
Quality of the teaching by the faculty members and support extended by them towards the overall development of the students.	1	3	7	17	200
The conduct of examinations and evaluation system (both internal and external exams) is effective and transparent.	0	4	7	12	205
The quality of the food and hygiene maintenance in the hostel mess and canteen/cafeteria.	0	3	8	18	199

The curriculum and syllabi are at par with the industry requirements.



Dr. R. RAJAPPAN, Ph.D.
Principal
Mailam Engineering College
Mailam - 604 304, Villupuram (DL)



MAILAM ENGINEERING COLLEGE

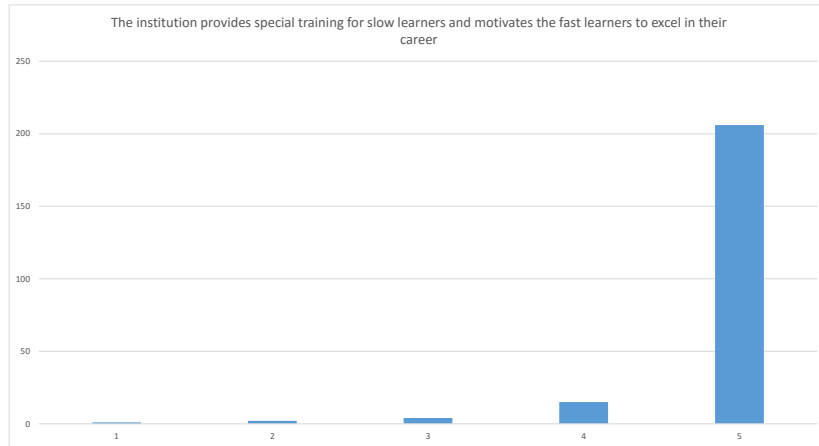
(Approved by AICTE, New Delhi, Affiliated to Anna University Chennai & Accredited by TATA Consultancy Services TCS, Accredited by NBA, New Delhi)

DEPARTMENT OF MECHANICAL ENGINEERING

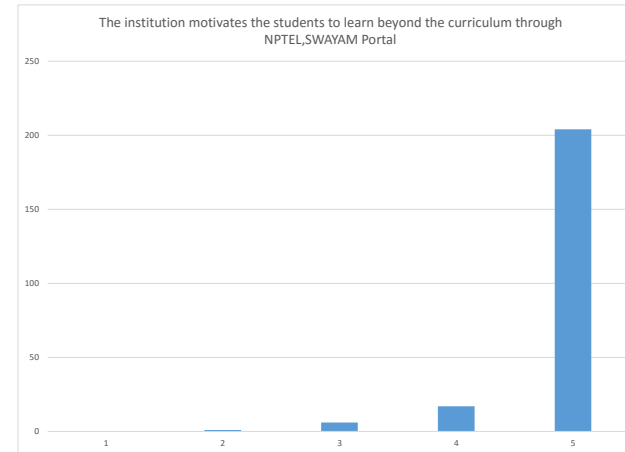
Students Feedback Analysis report - Academic year:2022-2023

Date: 20.03.23

The institution provides special training for slow learners and motivates the fast learners to excel in their career.



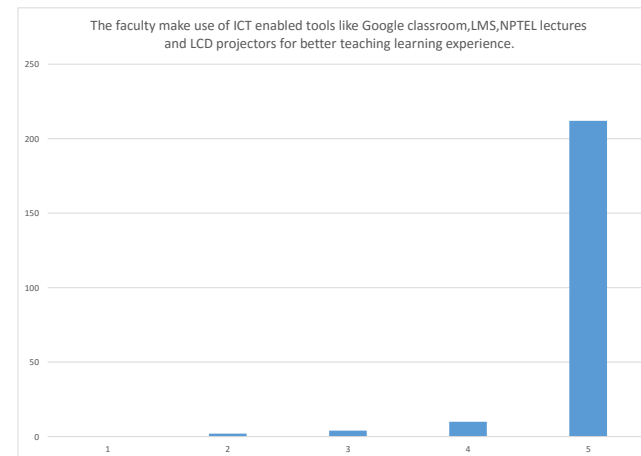
The institution motivates the students to learn beyond the curriculum through NPTEL, SWAYAM portal.



The classrooms, laboratories, library are spacious, well maintained and fully equipped with appropriate resources.



The faculty make use of ICT enabled tools like Google classroom, LMS, NPTEL lectures and LCD projectors for better teaching learning experience.



Dr. R. RAJAPPAN, Ph.D.
Principal
Mailam Engineering College
Mailam - 604 304, Villupuram (Dt.)



MAILAM ENGINEERING COLLEGE

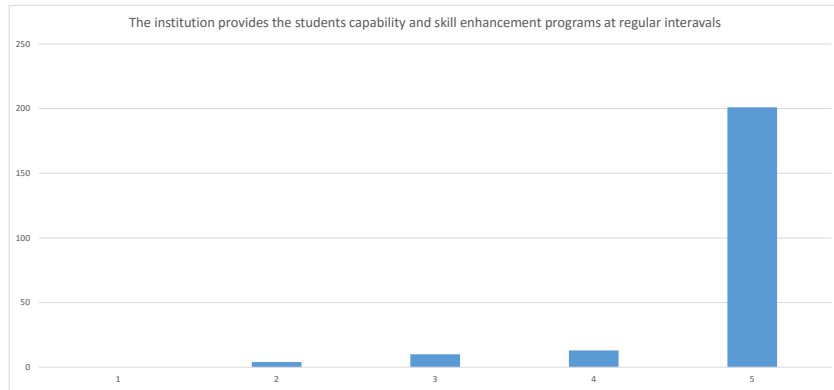
(Approved by AICTE, New Delhi, Affiliated to Anna University Chennai
& Accredited by TATA Consultancy Services TCS, Accredited by NBA, New Delhi)

DEPARTMENT OF MECHANICAL ENGINEERING

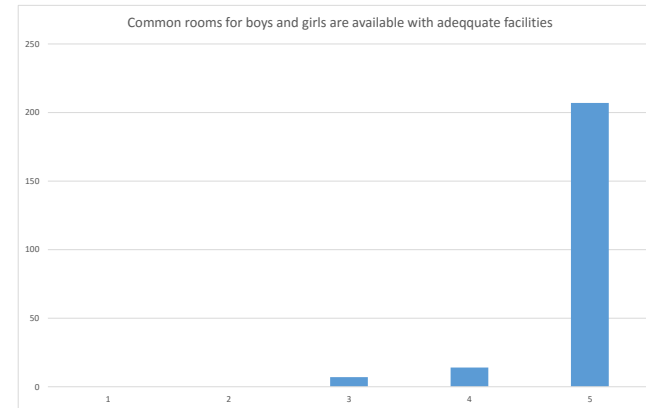
Students Feedback Analysis report - Academic year:2022-2023

Date: 20.03.23

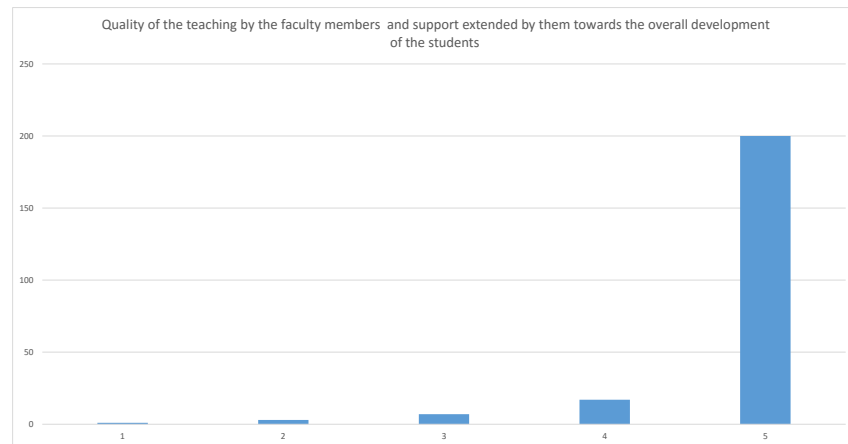
The institution provides the students capability and skill enhancement programs at regular intervals.



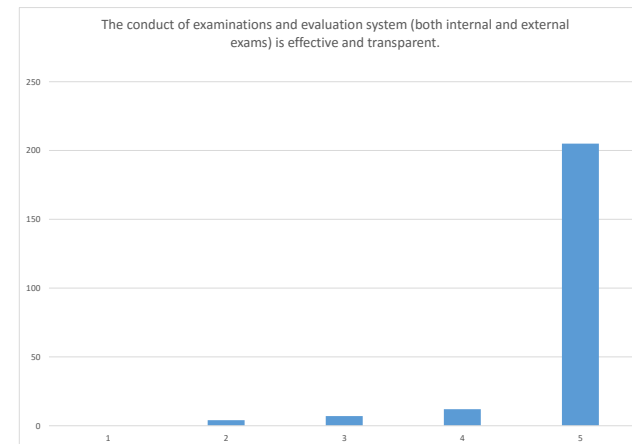
Common rooms for boys and girls are available with adequate facilities.



Quality of the teaching by the faculty members and support extended by them towards the overall development of the students.



The conduct of examinations and evaluation system (both internal and external exams) is effective and transparent.



Dr. R. RAJAPPAN, Ph.D.
Principal
Mailam Engineering College
Mailam - 604 304, Villupuram (Dt.)



MAILAM ENGINEERING COLLEGE

(Approved by AICTE, New Delhi, Affiliated to Anna University Chennai
& Accredited by TATA Consultancy Services TCS, Accredited by NBA, New Delhi)

DEPARTMENT OF MECHANICAL ENGINEERING

Students Feedback Analysis report - Academic year:2022-2023

Date: 20.03.23

The quality of the food and hygiene maintenance in the hostel mess and canteen/cafeteria.



HoD

PRINCIPAL



Dr. R. RAJAPPAN, Ph.D.
Principal
Mailam Engineering College
Mailam - 604 304, Villupuram (DT)



Mailam Engineering College

(Approved by AICTE, NewDelhi, affiliated to Anna University Chennai & Accredited by NBA & TATA Consultancy Services)

ACTION TAKEN REPORT ON STAKEHOLDERS FEEDBACK ACADEMIC PERFORMANCE AND AMBIENCE

ACADEMIC YEAR: 2022-2023

S.NO	PROGRAM	STAKEHOLDER	ACTION REQUIRED	ACTION PROPOSED	ACTION TAKEN
1	B.E/MECH	STUDENTS	The institution motivates the students to learn beyond the curriculum through NPTEL, SWAYAM portal.	Instructions were circulated to staff members through HoD	Following the same by the staff members in PPT presentation and also encouraging them to register and attend the NPTEL courses.


HOD


PRINCIPAL




Dr. R. RAJAPPAN, Ph.D.
Principal
Mailam Engineering College
Mailam - 604 304, Villupuram (Dt.)