



MAILAM ENGINEERING COLLEGE

(Approved by AICTE, New Delhi, Affiliated to Anna University Chennai
(Accredited by NBA, New Delhi & Accredited by TATA Consultancy Services TCS, Chennai)

Faculty Feedback Analysis report - Academic year:2022-2023

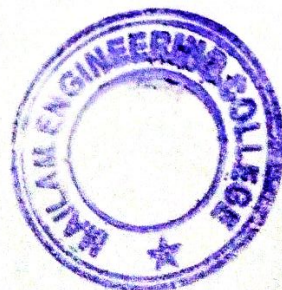
OVERALL FACULTY SURVEY ANALYSIS

Date: 14-Apr-2023

TOTAL FACULTY FEEDBACK SUBMITTED

252

Questions	Number of students Marked-Poor	Number of students Marked-Fair	Number of students Marked-Good	Number of students Marked-Very Good	Number of students Marked-Excellent
Students are encouraged to undergo training after the working hours to achieve better results	0	0	11	90	151
Faculty members are given appropriate training with modern tools to manage the classes effectively.	0	0	27	57	168
Faculty can handle special classes through blended mode to take care of slow learners for better results.	0	0	22	40	190
Space and infrastructure facility provided are sufficient and good for better teaching learning process.	0	0	27	60	165
The institution promotes faculty members towards their career development (FDP, Workshops, MOOC courses) and supports financially.	0	0	24	70	158
The curriculum has an appropriate blend of theory and practical component to meet the industry standards.	0	0	25	77	150
The evaluation and examination support system in existence for curriculum.	0	0	25	70	157



Dr. R. RAJAPPAN, Ph.D.
Principal
Mailam Engineering College
Mailam - 604 304, Villupuram (Dt.)

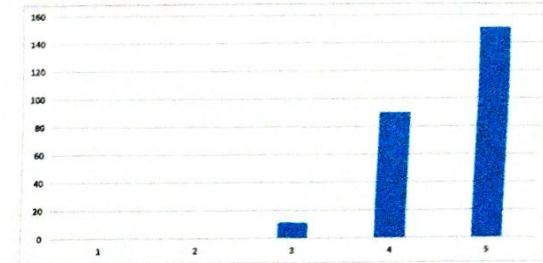


MAILAM ENGINEERING COLLEGE

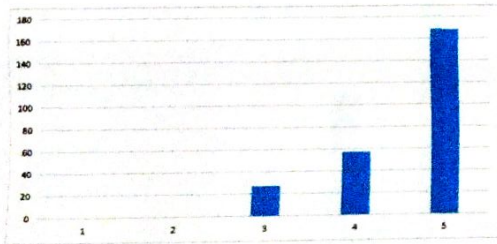
(Approved by AICTE, New Delhi, Affiliated to Anna University Chennai
(Accredited by NBA, New Delhi & Accredited by TATA Consultancy Services TCS, Chennai)

Faculty Feedback Analysis report - Academic year:2022-2023
OVERALL FACULTY SURVEY ANALYSIS

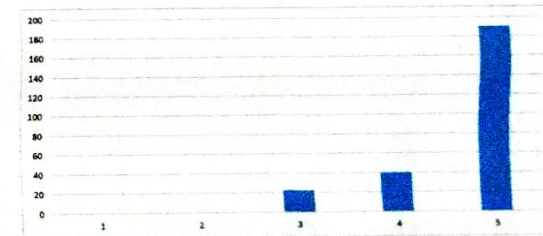
Students are encouraged to undergo training after the working hours to achieve better results



Faculty members are given appropriate training with modern tools to manage the classes effectively.



Faculty can handle special classes through blended mode to take care of slow learners for better results.



Dr. R. RAJAPPAN, Ph.D.
Principal
Mailam Engineering College
Mailam - 604 304, Villupuram (Dt.)

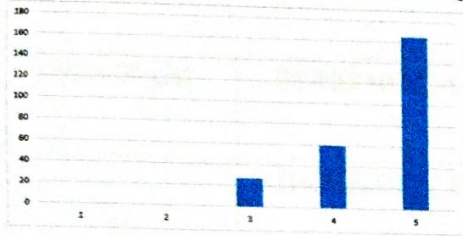


MAILAM ENGINEERING COLLEGE

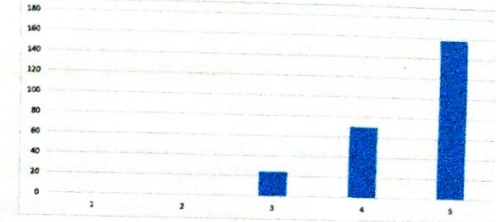
(Approved by AICTE, New Delhi, Affiliated to Anna University Chennai
(Accredited by NBA, New Delhi & Accredited by TATA Consultancy Services TCS, Chennai)

Faculty Feedback Analysis report - Academic year:2022-2023
OVERALL FACULTY SURVEY ANALYSIS

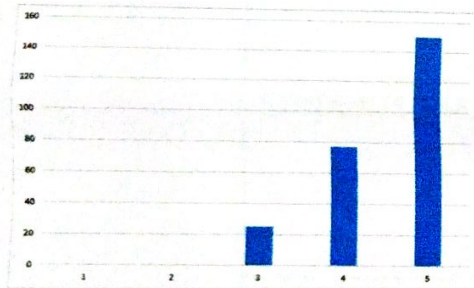
Space and infrastructure facility provided are sufficient and good for better teaching learning process.



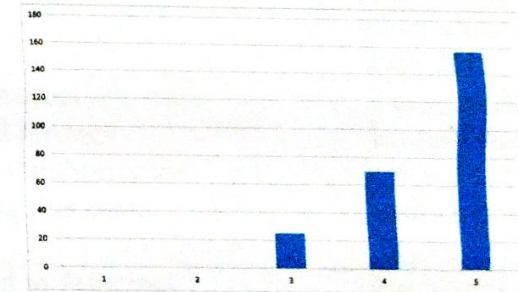
The institution promotes faculty members towards their career development (FDP, Workshops, I courses) and supports financially.



The curriculum has an appropriate blend of theory and practical component to meet the industry standards.

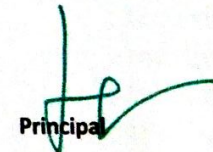


The evaluation and examination support system in existence for curriculum.




IQAC Coordinator




Principal

Dr. R. RAJAPPAN, Ph.D.
Principal
Mailam Engineering College
Mailam - 604 304, Villupuram (Dt.)

