



# MAILAM ENGINEERING COLLEGE

(Approved by AICTE, New Delhi, Affiliated to Anna University Chennai  
(Accredited by NBA, New Delhi & Accredited by TATA Consultancy Services TCS, Chennai)

Faculty Feedback Analysis report - Academic year:2017-2018  
OVERALL FACULTY SURVEY ANALYSIS

Date: 15/3/2018

TOTAL FACULTY COUNT  
TOTAL FEEDBACK SUBMITTED

304  
300

Questions	Number of students Marked-Poor	Number of students Marked-Fair	Number of students Marked-Good	Number of students Marked-Very Good	Number of students Marked-Excellent
Students are encouraged to undergo training after the working hours to achieve better results	0	0	82	113	105
Faculty members are given appropriate training with modern tools to manage the classes effectively.	0	0	47	132	121
Faculty can handle special classes through blended mode to take care of slow learners for better results.	0	0	32	128	140
Space and infrastructure facility provided are sufficient and good for better teaching learning process.	0	0	25	162	113
The institution promotes faculty members towards their career development (FDP, Workshops, MOOC courses) and supports financially.	0	0	38	154	108
The curriculum has an appropriate blend of theory and practical component to meet the industry standards.	0	0	23	129	148
The evaluation and examination support system in existence for curriculum.	0	0	50	150	100



  
**Dr. R. RAJAPPAN, Ph.D.**  
Principal  
Mailam Engineering College  
Mailam - 604 304, Villupuram (Dt.)

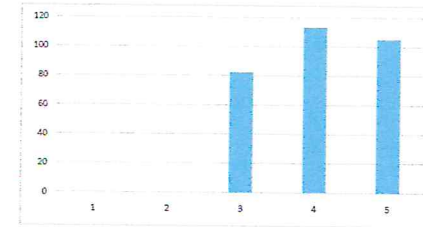


# MAILAM ENGINEERING COLLEGE

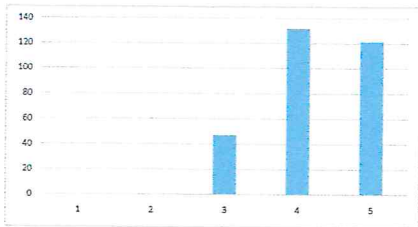
(Approved by AICTE, New Delhi, Affiliated to Anna University Chennai  
(Accredited by NBA, New Delhi & Accredited by TATA Consultancy Services TCS, Chennai)

Faculty Feedback Analysis report - Academic year:2017-2018  
OVERALL FACULTY SURVEY ANALYSIS

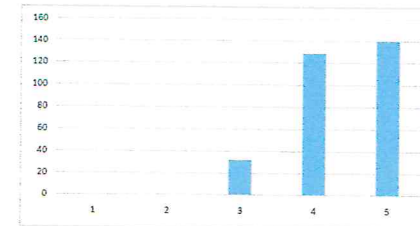
Students are encouraged to undergo training after the working hours to achieve better results



Faculty members are given appropriate training with modern tools to manage the classes effectively.



Faculty can handle special classes through blended mode to take care of slow learners for better results.



  
**Dr. R. RAJAPPAN, Ph.D.**  
Principal  
Mailam Engineering College  
Mailam - 604 304, Villupuram (Dt.)

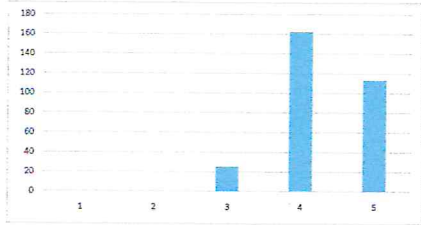


# MAILAM ENGINEERING COLLEGE

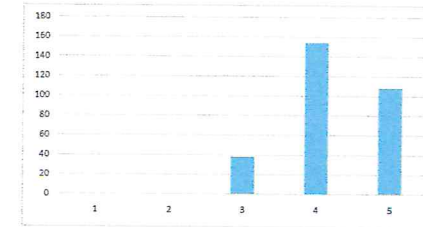
(Approved by AICTE, New Delhi, Affiliated to Anna University Chennai  
(Accredited by NBA, New Delhi & Accredited by TATA Consultancy Services TCS, Chennai)

Faculty Feedback Analysis report - Academic year:2017-2018  
OVERALL FACULTY SURVEY ANALYSIS

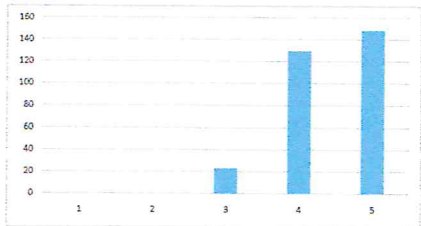
Space and infrastructure facility provided are sufficient and good for better teaching learning process.



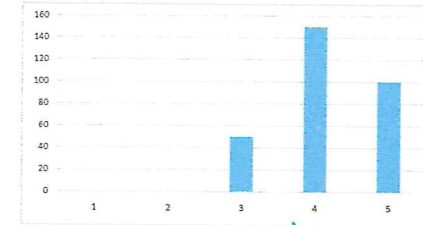
The institution promotes faculty members towards their career development (FDP, Workshops, MOOC courses) and supports financially.



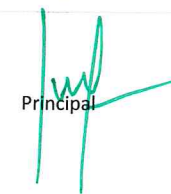
The curriculum has an appropriate blend of theory and practical component to meet the industry standards.



The evaluation and examination support system in existence for curriculum.



  
IQAC COORDINATOR

  
Principal



  
**Dr. R. RAJAPPAN, Ph.D.**  
Principal  
Mailam Engineering College  
Mailam - 604 304, Villupuram (DL)