



MAILAM ENGINEERING COLLEGE

(Approved by AICTE, New Delhi, Affiliated to Anna University Chennai
(Accredited by NBA, New Delhi & Accredited by TATA Consultancy Services TCS, Chennai)

Faculty Feedback Analysis report - Academic year:2018-2019
OVERALL FACULTY SURVEY ANALYSIS

Date: 20/4/2019

TOTAL FACULTY COUNT 274
TOTAL FEEDBACK SUBMITTED 270

Questions	Number of students Marked-Poor	Number of students Marked-Fair	Number of students Marked-Good	Number of students Marked-Very Good	Number of students Marked-Excellent
Students are encouraged to undergo training after the working hours to achieve better results	0	0	70	100	100
Faculty members are given appropriate training with modern tools to manage the classes effectively.	0	0	61	119	90
Faculty can handle special classes through blended mode to take care of slow learners for better results.	0	0	77	128	63
Space and infrastructure facility provided are sufficient and good for better teaching learning process.	0	0	45	139	86
The institution promotes faculty members towards their career development (FDP, Workshops, MOOC courses) and supports financially.	0	0	29	141	100
The curriculum has an appropriate blend of theory and practical component to meet the industry standards.	0	0	52	141	79
The evaluation and examination support system in existence for curriculum.	0	0	37	124	109




Dr. R. RAJAPPAN, Ph.D.
Principal
Mailam Engineering College
Mailam - 604 304, Villupuram (Dt.)

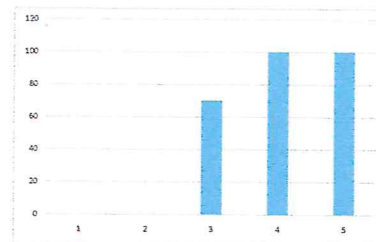


MAILAM ENGINEERING COLLEGE

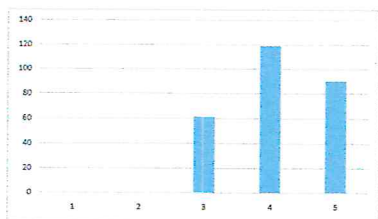
(Approved by AICTE, New Delhi, Affiliated to Anna University Chennai
(Accredited by NBA, New Delhi & Accredited by TATA Consultancy Services TCS, Chennai)

Faculty Feedback Analysis report - Academic year:2018-2019
OVERALL FACULTY SURVEY ANALYSIS

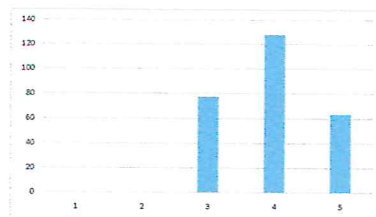
Students are encouraged to undergo training
after the working hours to achieve better results



Faculty members are given appropriate training with modern tools to manage the classes effectively.



Faculty can handle special classes through blended mode to take care of slow learners
results.




Dr. R. RAJAPPAN, Ph.D.
Principal
Mailam Engineering College
Mailam - 604 304, Villupuram (Dt.)

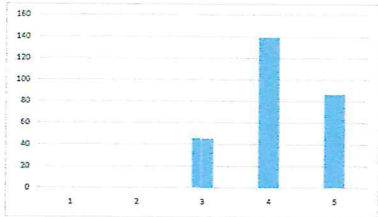


MAILAM ENGINEERING COLLEGE

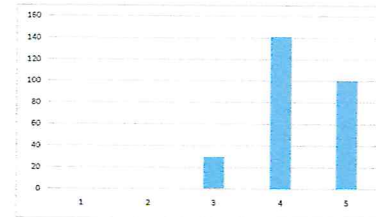
(Approved by AICTE, New Delhi, Affiliated to Anna University Chennai
(Accredited by NBA, New Delhi & Accredited by TATA Consultancy Services TCS, Chennai))

Faculty Feedback Analysis report - Academic year:2018-2019
OVERALL FACULTY SURVEY ANALYSIS

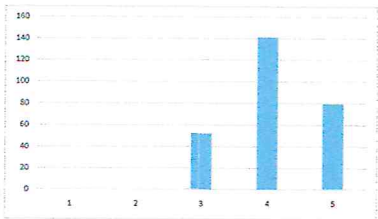
Space and infrastructure facility provided are sufficient and good for better teaching learning process.



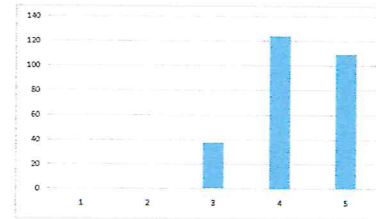
The institution promotes faculty members towards their career development (FDP, Workshops, MOOC courses) and supports financially.



The curriculum has an appropriate blend of theory and practical component to meet the industry standards.



The evaluation and examination support system in existence for curriculum.




IQAC COORDINATOR


Principal




Dr. R. RAJAPPAN, Ph.D.
Principal
Mailam Engineering College
Mailam - 604 304, Villupuram (Dt.)