



MAILAM ENGINEERING COLLEGE

(Approved by AICTE, New Delhi, Affiliated to Anna University Chennai
(Accredited by NBA, New Delhi & Accredited by TATA Consultancy Services TCS, Chennai)

Faculty Feedback Analysis report - Academic year:2019-2020
OVERALL FACULTY SURVEY ANALYSIS

Date: 16/04/2020

TOTAL FACULTY COUNT 286
TOTAL FEEDBACK SUBMITTED 279

Questions	Number of students Marked-Poor	Number of students Marked-Fair	Number of students Marked-Good	Number of students Marked-Very Good	Number of students Marked-Excellent
Students are encouraged to undergo training after the working hours to achieve better results	0	0	52	135	92
Faculty members are given appropriate training with modern tools to manage the classes effectively.	0	0	49	115	115
Faculty can handle special classes through blended mode to take care of slow learners for better results.	0	0	35	153	91
Space and infrastructure facility provided are sufficient and good for better teaching learning process.	0	0	55	112	112
The institution promotes faculty members towards their career development (FDP, Workshops, MOOC courses) and supports financially.	0	0	65	139	75
The curriculum has an appropriate blend of theory and practical component to meet the industry standards.	0	0	59	136	84
The evaluation and examination support system in existence for curriculum.	0	0	61	107	111




Dr. R. RAJAPPAN, Ph.D.
Principal
Mailam Engineering College
Mailam - 604 304, Villupuram (Dt.)

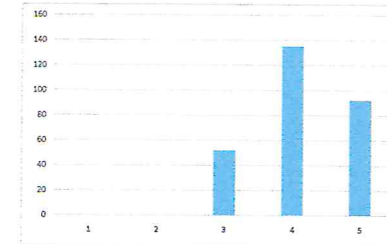


MAILAM ENGINEERING COLLEGE

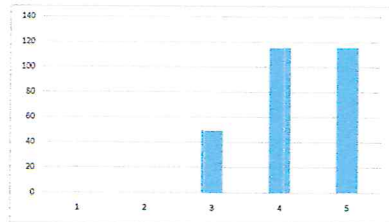
(Approved by AICTE, New Delhi, Affiliated to Anna University Chennai
(Accredited by NBA, New Delhi & Accredited by TATA Consultancy Services TCS, Chennai)

Faculty Feedback Analysis report - Academic year:2019-2020
OVERALL FACULTY SURVEY ANALYSIS

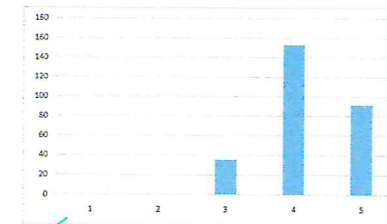
Students are encouraged to undergo training after the working hours to achieve better results



Faculty members are given appropriate training with modern tools to manage the classes effectively.



Faculty can handle special classes through blended mode to take care of slow learners for better results.



Dr. R. RAJAPPAN, Ph.D.
Principal
Mailam Engineering College
Mailam - 604 304, Villupuram (Dt.)

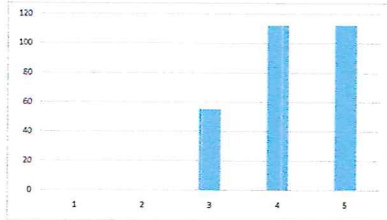


MAILAM ENGINEERING COLLEGE

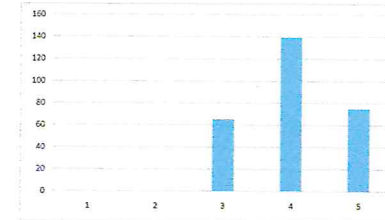
(Approved by AICTE, New Delhi, Affiliated to Anna University Chennai
(Accredited by NBA, New Delhi & Accredited by TATA Consultancy Services TCS, Chennai)

Faculty Feedback Analysis report - Academic year:2019-2020
OVERALL FACULTY SURVEY ANALYSIS

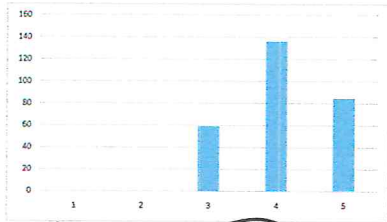
Space and infrastructure facility provided are sufficient and good for better teaching learning process.



The institution promotes faculty members towards their career development (FDP, Workshops, MOOC courses) and supports financially.

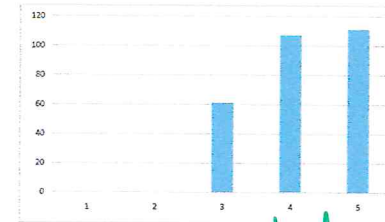


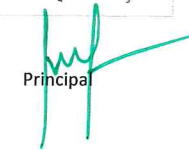
The curriculum has an appropriate blend of theory and practical component to meet the industry standards.




IQAC COORDINATOR

The evaluation and examination support system in existence for curriculum.




Principal




Dr. R. RAJAPPAN, Ph.D.
Principal
Mailam Engineering College
Mailam - 604 304, Villupuram (Dt.)