



## MAILAM ENGINEERING COLLEGE

(Approved by AICTE, New Delhi, Affiliated to Anna University Chennai  
(Accredited by NBA, New Delhi & Accredited by TATA Consultancy Services TCS, Chennai)

Faculty Feedback Analysis report - Academic year: 2021-2022

### OVERALL FACULTY SURVEY ANALYSIS

Date: 13/4/2022

TOTAL FACULTY COUNT  
TOTAL FEEDBACK SUBMITTED

306  
302

| Questions  | Number of students Marked-Poor | Number of students Marked-Fair | Number of students Marked-Good | Number of students Marked-Very Good | Number of students Marked-Excellent |
|--|--------------------------------|--------------------------------|--------------------------------|-------------------------------------|-------------------------------------|
| Students are encouraged to undergo training after the working hours to achieve better results                                      | 0                              | 0                              | 25                             | 126                                 | 151                                 |
| Faculty members are given appropriate training with modern tools to manage the classes effectively.                                | 0                              | 0                              | 47                             | 137                                 | 118                                 |
| Faculty can handle special classes through blended mode to take care of slow learners for better results.                          | 0                              | 0                              | 27                             | 135                                 | 140                                 |
| Space and infrastructure facility provided are sufficient and good for better teaching learning process.                           | 0                              | 0                              | 25                             | 162                                 | 115                                 |
| The institution promotes faculty members towards their career development (FDP, Workshops, MOOC courses) and supports financially. | 0                              | 0                              | 38                             | 156                                 | 108                                 |
| The curriculum has an appropriate blend of theory and practical component to meet the industry standards.                          | 0                              | 0                              | 55                             | 147                                 | 100                                 |
| The evaluation and examination support system in existence for curriculum.   | 0                              | 0                              | 85                             | 110                                 | 107                                 |



  
**Dr. R. RAJAPPAN, Ph.D.**  
Principal  
Mailam Engineering College  
Mailam - 604 304, Villupuram (Dt.)

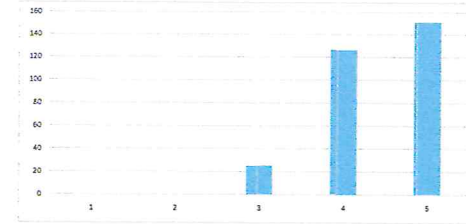


# MAILAM ENGINEERING COLLEGE

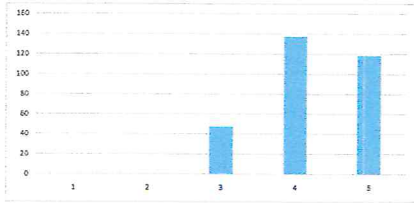
(Approved by AICTE, New Delhi, Affiliated to Anna University Chennai  
(Accredited by NBA, New Delhi & Accredited by TATA Consultancy Services TCS, Chennai)

Faculty Feedback Analysis report - Academic year:2021-2022  
OVERALL FACULTY SURVEY ANALYSIS

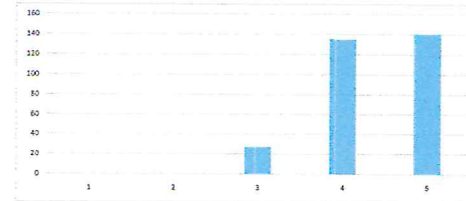
Students are encouraged to undergo training after the working hours to achieve better results



Faculty members are given appropriate training with modern tools to manage the classes effectively.



Faculty can handle special classes through blended mode to take care of slow learners for better results.



  
**Dr. R. RAJAPPAN, Ph.D.**  
Principal  
Mailam Engineering College  
Mailam - 604 304, Villupuram (Dt.)

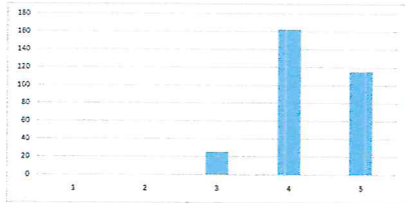


# MAILAM ENGINEERING COLLEGE

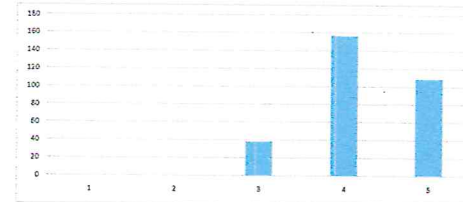
(Approved by AICTE, New Delhi, Affiliated to Anna University Chennai  
(Accredited by NBA, New Delhi & Accredited by TATA Consultancy Services TCS, Chennai)

Faculty Feedback Analysis report - Academic year:2021-2022  
OVERALL FACULTY SURVEY ANALYSIS

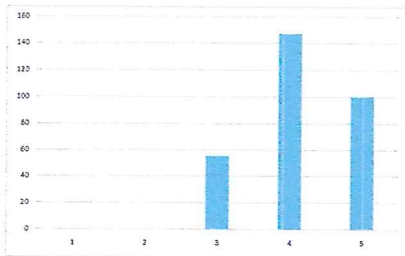
Space and infrastructure facility provided are sufficient and good for better teaching learning process.



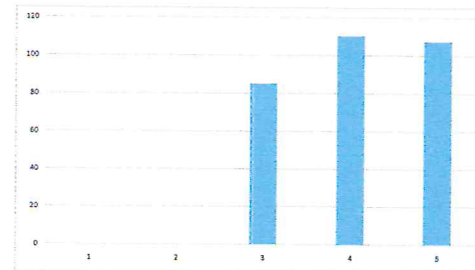
The institution promotes faculty members towards their career development (FDP, Workshops, MOOC courses) and supports financially.



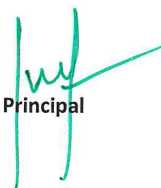
The curriculum has an appropriate blend of theory and practical component to meet the industry standards.



The evaluation and examination support system in existence for curriculum.



  
IQAC Coordinator

  
Principal



  
**Dr. R. RAJAPPAN, Ph.D.**  
Principal  
Mailam Engineering College  
Mailam - 604 304, Villupuram (Dt.)