



# MAILAM ENGINEERING COLLEGE

(Approved by AICTE, New Delhi, Affiliated to Anna University Chennai  
(Accredited by NBA, New Delhi & Accredited by TATA Consultancy Services TCS, Chennai)

Students Feedback Analysis report - Academic year:2022-2023  
OVERALL STUDENTS SURVEY ANALYSIS

Date: 24.03.23

TOTAL FEEDBACK SUBMITTED

2051

Questions	Number of students Marked-Poor	Number of students Marked-Fair	Number of students Marked-Good	Number of students Marked-Very Good	Number of students Marked-Excellent
The curriculum and syllabi are at par with the industry requirements.	16	38	126	239	1632
The institution provides special training for slow learners and motivates the fast learners to excel in their career.	13	44	116	257	1621
The institution motivates the students to learn beyond the curriculum through NPTEL, SWAYAM portal.	7	44	128	225	1647
The classrooms, laboratories, library are spacious, well maintained and fully equipped with appropriate resources.	10	33	117	235	1656
The faculty make use of ICT enabled tools like Google classroom, LMS, NPTEL lectures and LCD projectors for better teaching learning experience.	7	34	141	255	1614
The institution provides the students capability and skill enhancement programs at regular intervals.	12	39	132	232	1636
Common rooms for boys and girls are available with adequate facilities.	8	28	118	214	1683
Quality of the teaching by the faculty members and support extended by them towards the overall development of the students.	10	34	112	207	1688
The conduct of examinations and evaluation system (both internal and external exams) is effective and transparent.	8	35	132	235	1641
The quality of the food and hygiene maintenance in the hostel mess and canteen/cafeteria.	20	61	144	189	1635



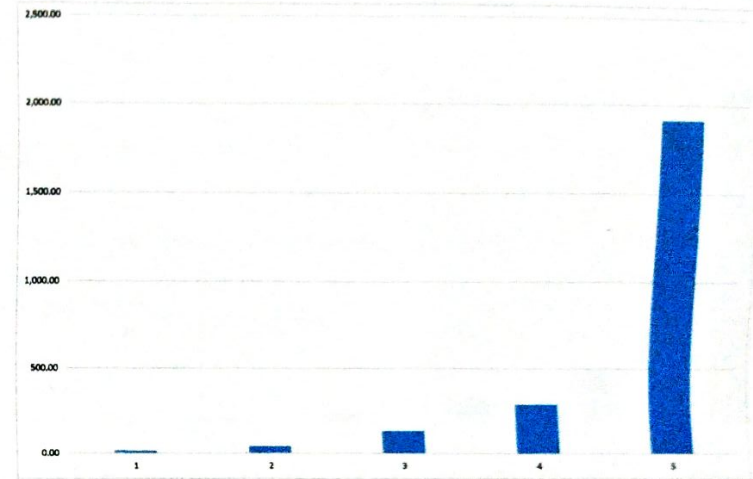
  
Dr. R. RAJAPPAN, Ph.D.  
Principal  
Mailam Engineering College  
Mailam - 604 304, Villupuram (Dt.)



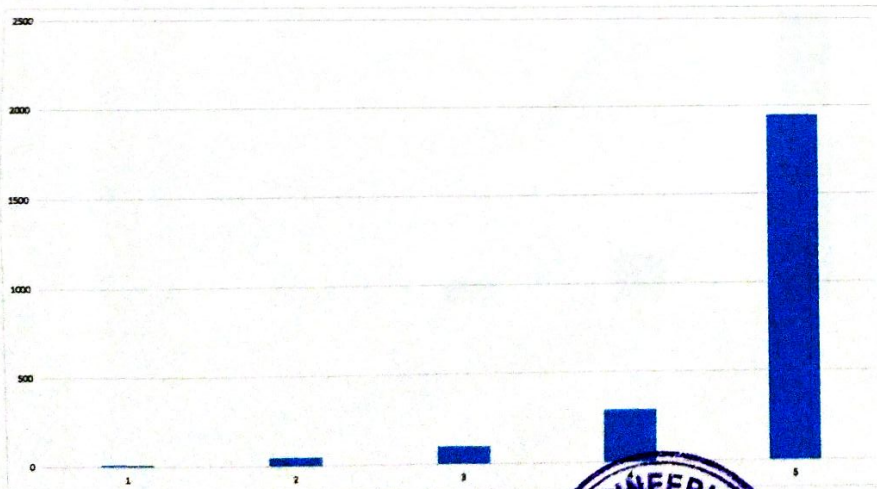
**MAILAM ENGINEERING COLLEGE**  
 (Approved by AICTE, New Delhi, Affiliated to Anna University Chennai  
 (Accredited by NBA, New Delhi & Accredited by TATA Consultancy Services TCS, Chennai)

Students Feedback Analysis report - Academic year:2022-2023  
 OVERALL STUDENTS SURVEY ANALYSIS

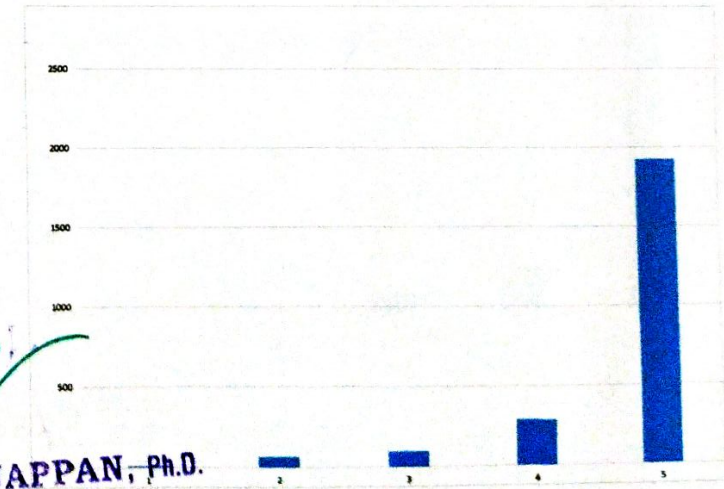
The curriculum and syllabi are at par with the industry requirements.



The institution provides special training for slow learners and motivates the fast learners to excel in their career.

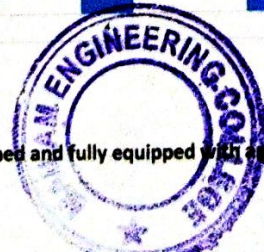


The institution motivates the students to learn beyond the curriculum NPTEL, SWAYAM portal.



*Dr. R. Rajappan*

**Dr. R. RAJAPPAN, Ph.D.**  
 Principal  
 Mailam Engineering College  
 Mailam - 604 304, Villupuram



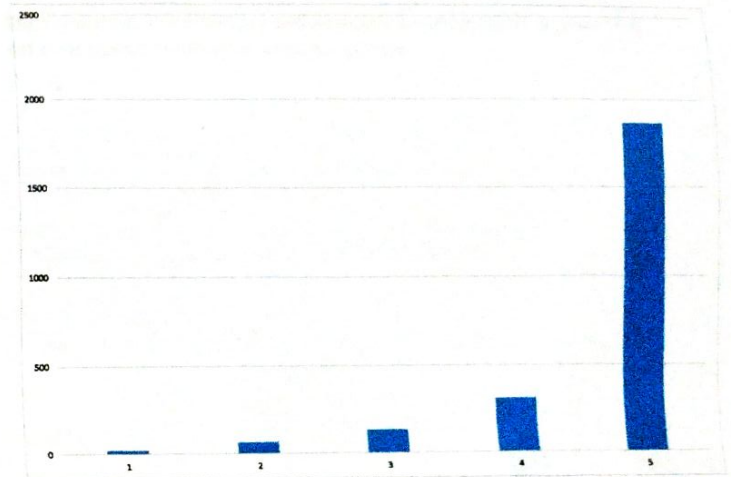
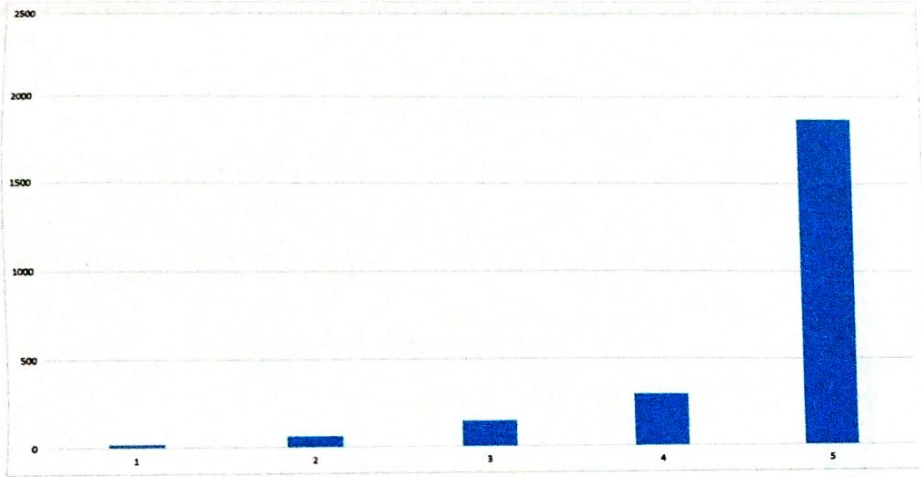
The classrooms, laboratories, library are spacious, well maintained and fully equipped with appropriate resources.

The faculty make use of ICT enabled tools like Google classroom, LMS, NPTEL lectures and LCD projectors for better teaching learning experience.



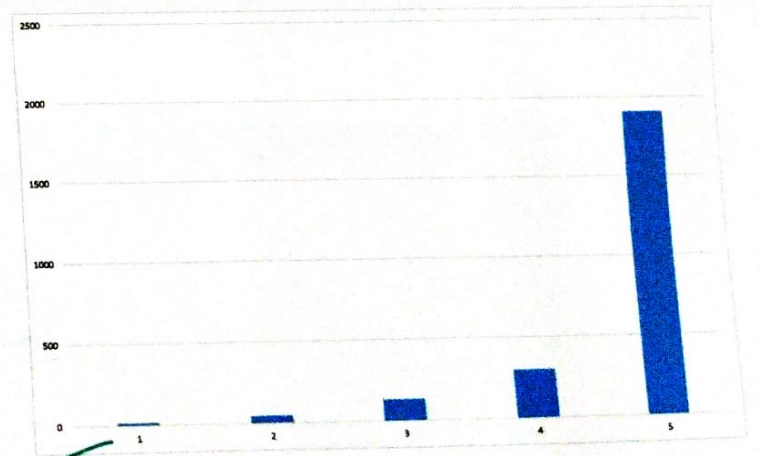
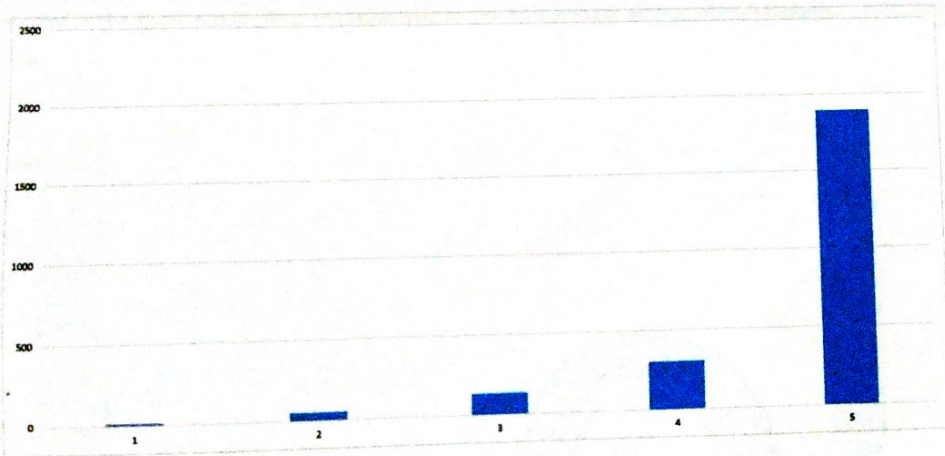
**MAILAM ENGINEERING COLLEGE**  
(Approved by AICTE, New Delhi, Affiliated to Anna University Chennai  
(Accredited by NBA, New Delhi & Accredited by TATA Consultancy Services TCS, Chennai))

Students Feedback Analysis report - Academic year:2022-2023  
OVERALL STUDENTS SURVEY ANALYSIS



The institution provides the students capability and skill enhancement programs at regular intervals.

Common rooms for boys and girls are available with adequate facilities.

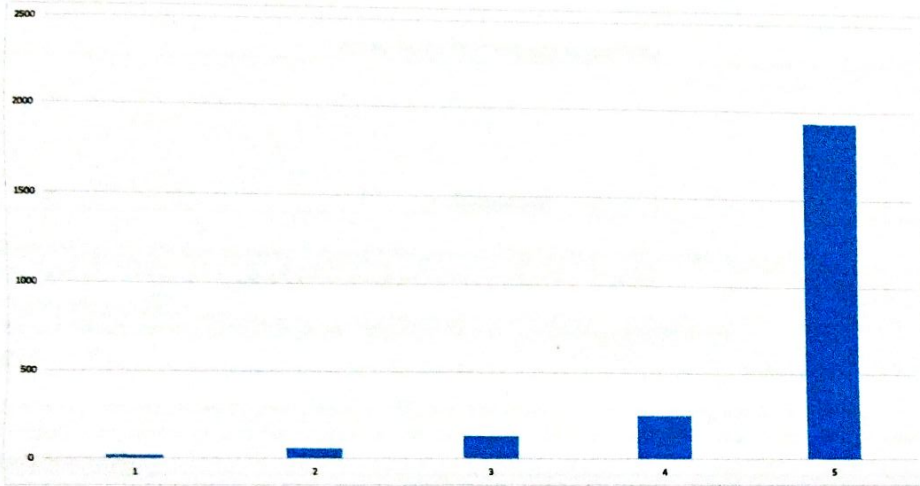


*Dr. R. Rajappan*  
Dr. R. RAJAPPAN, Ph.D.  
Principal  
Mailam Engineering College  
Mailam - 604 304, Villupuram (Dt.)

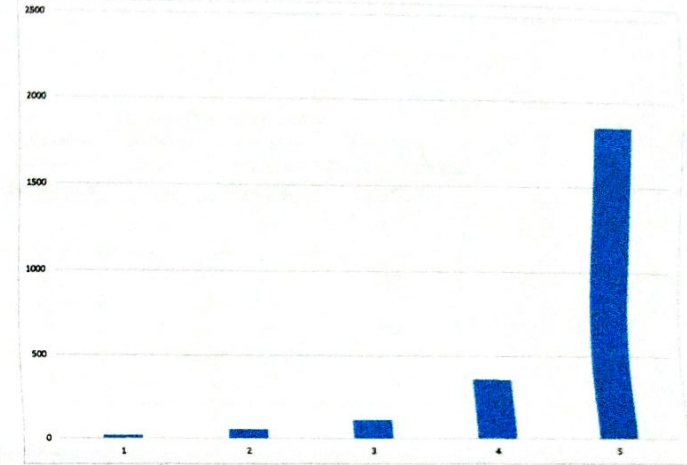


Students Feedback Analysis report - Academic year:2022-2023  
 OVERALL STUDENTS SURVEY ANALYSIS

Quality of the teaching by the faculty members and support extended by them towards the overall development of the students.



The conduct of examinations and evaluation system (both internal and external exams) is effective and transparent.



The quality of the food and hygiene maintenance in the hostel mess and canteen/cafeteria.



*[Signature]*  
 IQAC Coordinator

*[Signature]*  
**Dr. R. RAJAPPAN, Ph.D.**  
 Principal  
 Mailam Engineering College  
 Mailam - 604 304, Villupuram (Dt.)

*[Signature]*  
 Principal