



**MAILAM ENGINEERING COLLEGE**  
(Approved by AICTE, New Delhi, Affiliated to Anna University Chennai  
(Accredited by NBA, New Delhi & Accredited by TATA Consultancy Services TCS, Chennai)

Students Feedback Analysis report - Academic year:2019-2020  
OVERALL STUDENTS SURVEY ANALYSIS

Date: 03.04.20

TOTAL FEEDBACK SUBMITTED

1836

Questions	Number of students Marked-Poor	Number of students Marked-Fair	Number of students Marked-Good	Number of students Marked-Very Good	Number of students Marked-Excellent
The curriculum and syllabi are at par with the industry requirements.	15	34	91	279	1417
The institution provides special training for slow learners and motivates the fast learners to excel in their career.	15	28	102	279	1412
The institution motivates the students to learn beyond the curriculum through NPTEL, SWAYAM portal.	14	30	96	301	1395
The classrooms, laboratories, library are spacious, well maintained and fully equipped with appropriate resources.	10	31	94	277	1424
The faculty make use of ICT enabled tools like Google classroom, LMS, NPTEL lectures and LCD projectors for better teaching learning experience.	5	40	116	267	1408
The institution provides the students capability and skill enhancement programs at regular intervals.	13	44	98	285	1396
Common rooms for boys and girls are available with adequate facilities.	9	34	95	270	1428
Quality of the teaching by the faculty members and support extended by them towards the overall development of the students.	7	40	136	237	1416
The conduct of examinations and evaluation system (both internal and external exams) is effective and transparent.	6	38	92	263	1437
The quality of the food and hygiene maintenance in the hostel mess and canteen/cafeteria.	18	33	113	274	1398



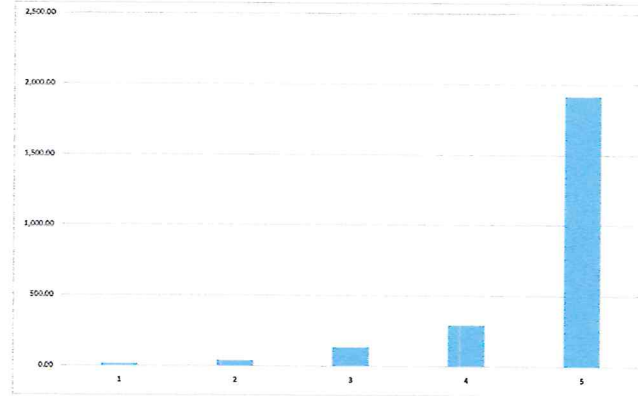
  
**Dr. R. RAJAPPAN, Ph.D.**  
Principal  
Mailam Engineering College  
Mailam - 604 304, Villupuram (Dt.)



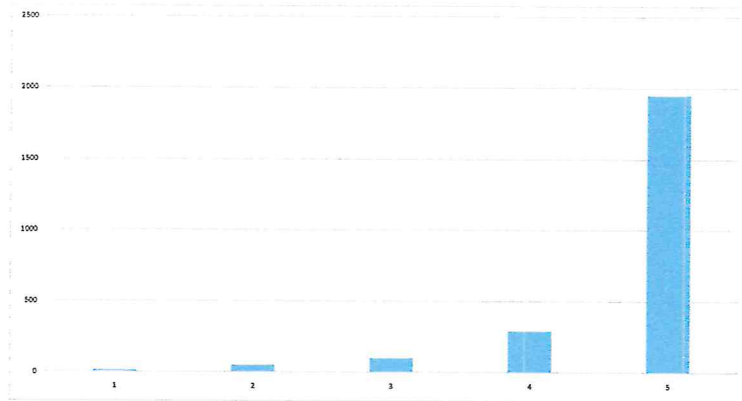
**MAILAM ENGINEERING COLLEGE**  
(Approved by AICTE, New Delhi, Affiliated to Anna University Chennai  
(Accredited by NBA, New Delhi & Accredited by TATA Consultancy Services TCS, Chennai)

Students Feedback Analysis report - Academic year:2019-2020  
OVERALL STUDENTS SURVEY ANALYSIS

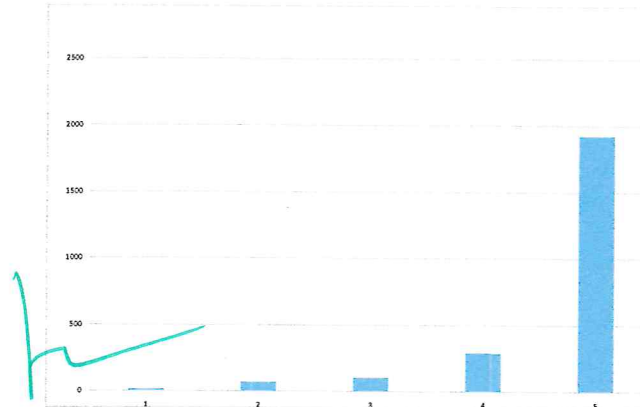
The curriculum and syllabi are at par with the industry requirements.



The institution provides special training for slow learners and motivates the fast learners to excel in their career.



The institution motivates the students to learn beyond the curriculum through NPTEL, SWAYAM portal.



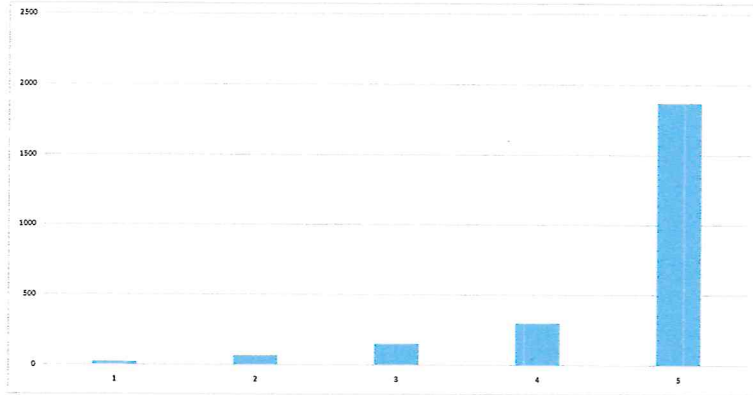
**Dr. R. RAJAPPAN, Ph.D.**  
Principal  
Mailam Engineering College  
Mailam - 604 304, Villupuram (Dt.)



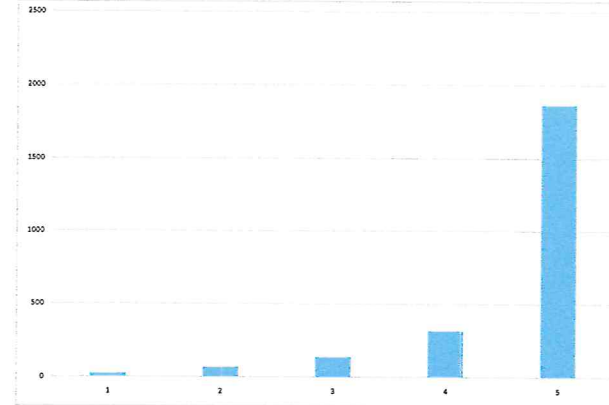
**MAILAM ENGINEERING COLLEGE**  
 (Approved by AICTE, New Delhi, Affiliated to Anna University Chennai  
 (Accredited by NBA, New Delhi & Accredited by TATA Consultancy Services TCS, Chennai)

Students Feedback Analysis report - Academic year:2019-2020  
 OVERALL STUDENTS SURVEY ANALYSIS

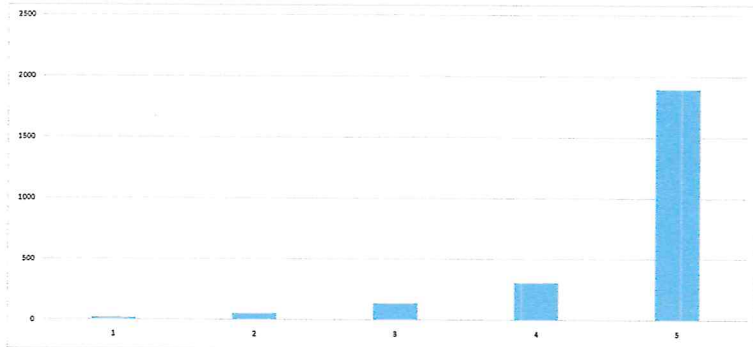
The classrooms, laboratories, library are spacious, well maintained and fully equipped with appropriate resources.



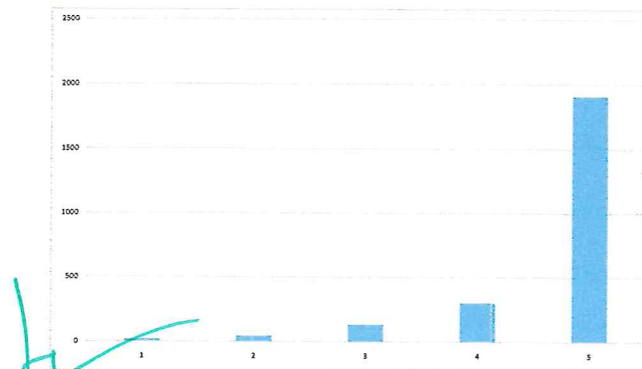
The faculty make use of ICT enabled tools like Google classroom, LMS, NPTEL lectures and LCD projectors for better teaching learning experience.



The institution provides the students capability and skill enhancement programs at regular intervals.



Common rooms for boys and girls are available with adequate facilities.



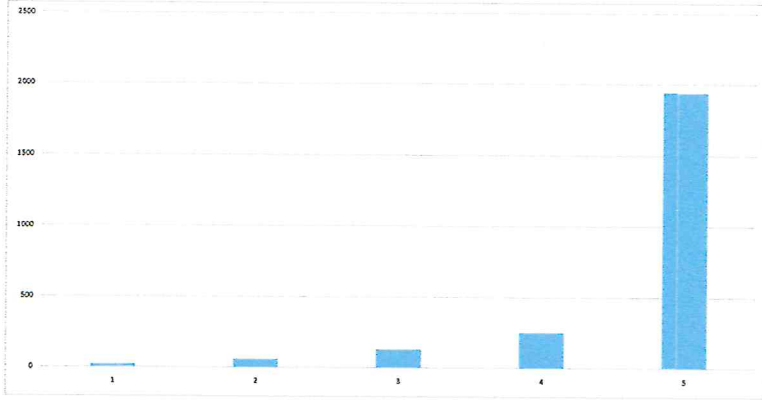
**Dr. R. RAJAPPAN, Ph.D.**  
 Principal  
 Mailam Engineering College  
 Mailam - 604 304, Villupuram (Dt.)



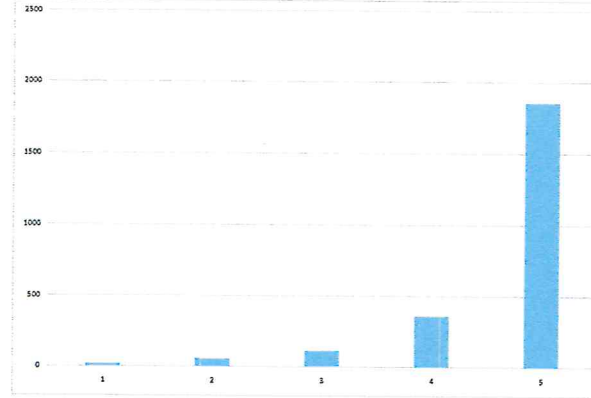
**MAILAM ENGINEERING COLLEGE**  
(Approved by AICTE, New Delhi, Affiliated to Anna University Chennai  
(Accredited by NBA, New Delhi & Accredited by TATA Consultancy Services TCS, Chennai)

Students Feedback Analysis report - Academic year:2019-2020  
OVERALL STUDENTS SURVEY ANALYSIS

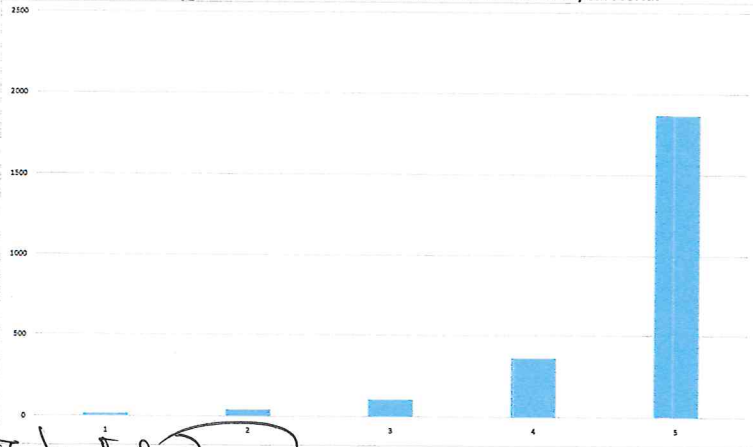
Quality of the teaching by the faculty members and support extended by them towards the overall development of the students.



The conduct of examinations and evaluation system (both internal and external exams) is effective and transparent.



The quality of the food and hygiene maintenance in the hostel mess and canteen/cafeteria.



*[Signature]*  
IQAC Coordinator



*[Signature]*  
**Dr. R. RAJAPPAN, Ph.D.**  
Principal  
Mailam Engineering College  
Mailam - 604 304, Villupuram (Dt.)

*[Signature]*  
Principal