



MAILAM ENGINEERING COLLEGE

(Approved by AICTE, New Delhi, Affiliated to Anna University Chennai
(Accredited by NBA, New Delhi & Accredited by TATA Consultancy Services TCS, Chennai)

Students Feedback Analysis report - Academic year:2021-2022 OVERALL STUDENTS SURVEY ANALYSIS

Date: 08.04.22

TOTAL FEEDBACK SUBMITTED

1337

Questions	Number of students Marked-Poor	Number of students Marked-Fair	Number of students Marked-Good	Number of students Marked-Very Good	Number of students Marked-Excellent
The curriculum and syllabi are at par with the industry requirements.	18	40	124	237	918
The institution provides special training for slow learners and motivates the fast learners to excel in their career.	14	46	114	255	908
The institution motivates the students to learn beyond the curriculum through NPTEL, SWAYAM portal.	8	46	126	223	934
The classrooms, laboratories, library are spacious, well maintained and fully equipped with appropriate resources.	12	35	115	232	943
The faculty make use of ICT enabled tools like Google classroom, LMS, NPTEL lectures and LCD projectors for better teaching learning experience.	8	36	139	253	901
The institution provides the students capability and skill enhancement programs at regular intervals.	13	41	130	230	923
Common rooms for boys and girls are available with adequate facilities.	9	30	116	212	970
Quality of the teaching by the faculty members and support extended by them towards the overall development of the students.	11	36	110	205	975
The conduct of examinations and evaluation system (both internal and external exams) is effective and transparent.	9	37	130	233	928
The quality of the food and hygiene maintenance in the hostel mess and canteen/cafeteria.	23	63	142	187	922




Dr. R. RAJAPPAN, Ph.D.
Principal
Mailam Engineering College
Mailam - 604 304, Villupuram (Dt.)

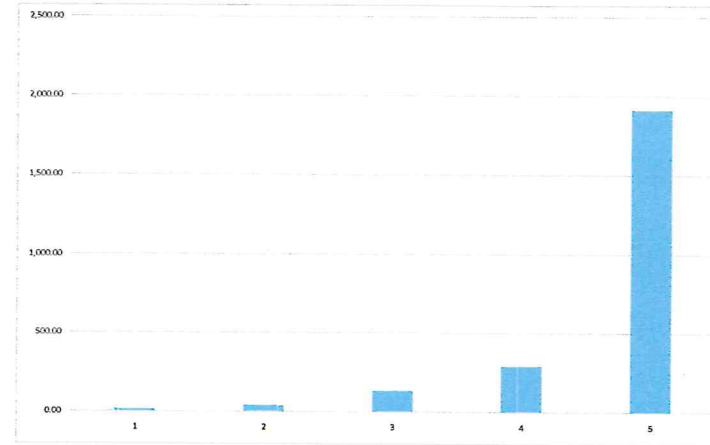


MAILAM ENGINEERING COLLEGE

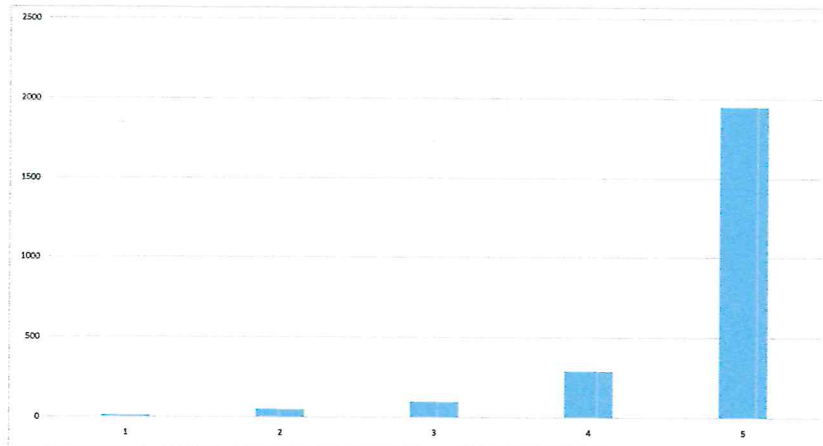
(Approved by AICTE, New Delhi, Affiliated to Anna University Chennai
(Accredited by NBA, New Delhi & Accredited by TATA Consultancy Services TCS, Chennai)

Students Feedback Analysis report - Academic year:2021-2022
OVERALL STUDENTS SURVEY ANALYSIS

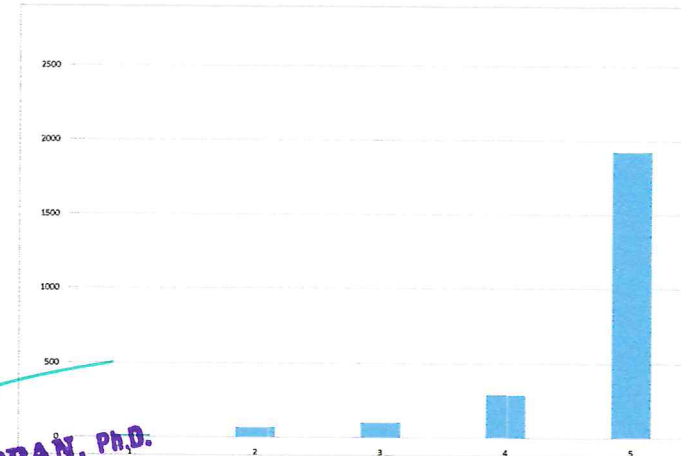
The curriculum and syllabi are at par with the industry requirements.



The institution provides special training for slow learners and motivates the fast learners to excel in their career.



The institution motivates the students to learn beyond the curriculum NPTEL, SWAYAM portal.



Dr. R. RAJAPPAN, Ph.D.
Principal
Mailam Engineering College
Mailam - 604 304, Villupuram (Dt.)

The classrooms, laboratories, library are spacious, well maintained and fully equipped with appropriate resources.

The faculty make use of ICT enabled tools like Google classroom, LMS, NPTEL, and LCD projectors for better teaching learning experience.



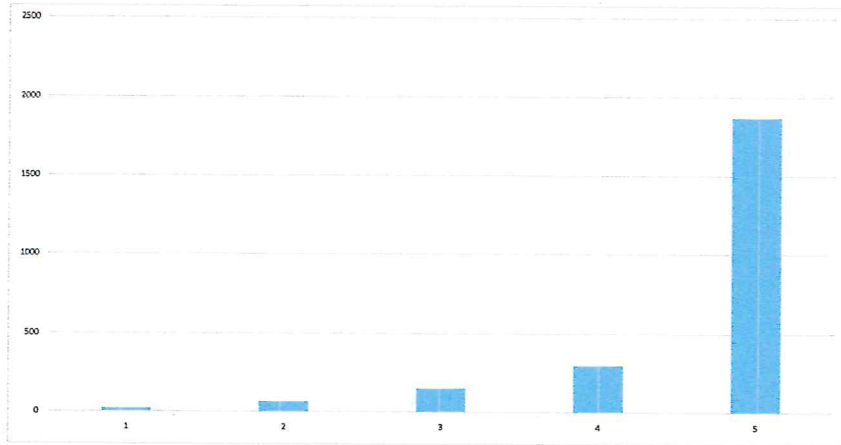


MAILAM ENGINEERING COLLEGE

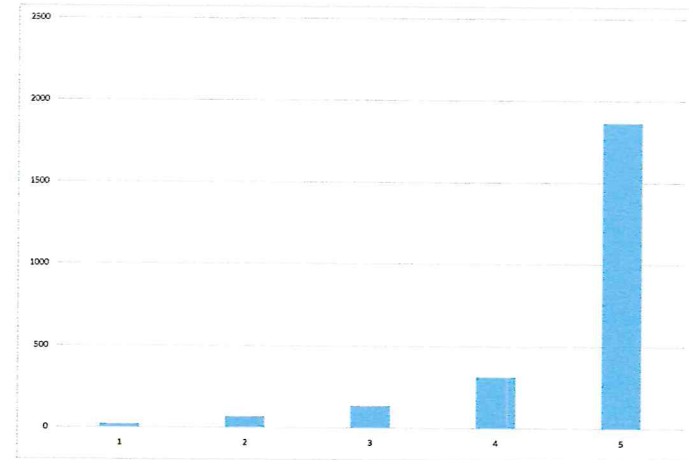
(Approved by AICTE, New Delhi, Affiliated to Anna University Chennai
(Accredited by NBA, New Delhi & Accredited by TATA Consultancy Services TCS, Chennai)

Students Feedback Analysis report - Academic year:2021-2022

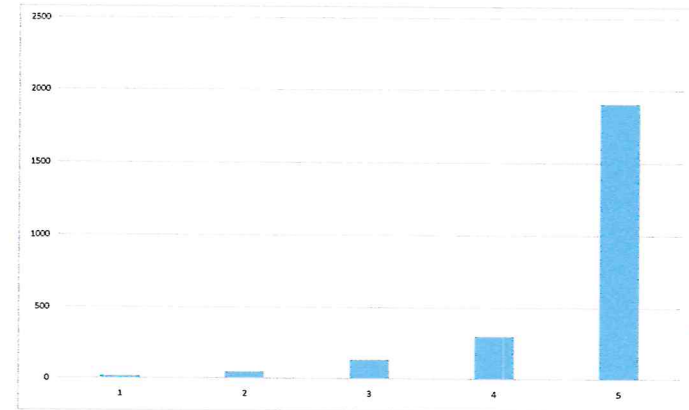
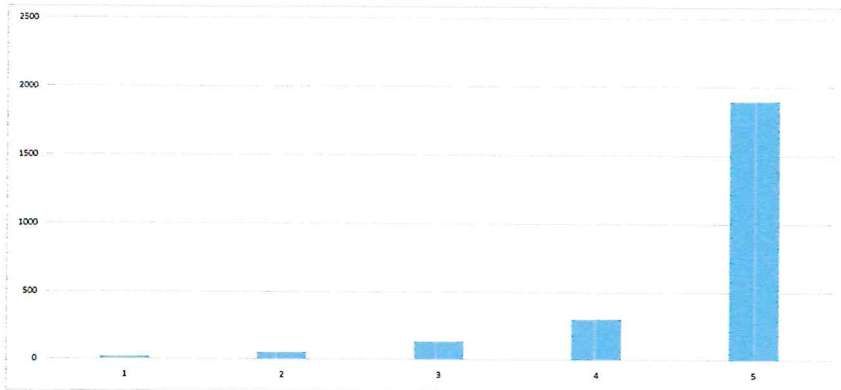
OVERALL STUDENTS SURVEY ANALYSIS



The institution provides the students capability and skill enhancement programs at regular intervals.



Common rooms for boys and girls are available with adequate facilities.



Dr. R. RAJAPPAN, Ph.D.
Principal
Mailam Engineering College
Mailam - 604 304, Villupuram (Dt.)



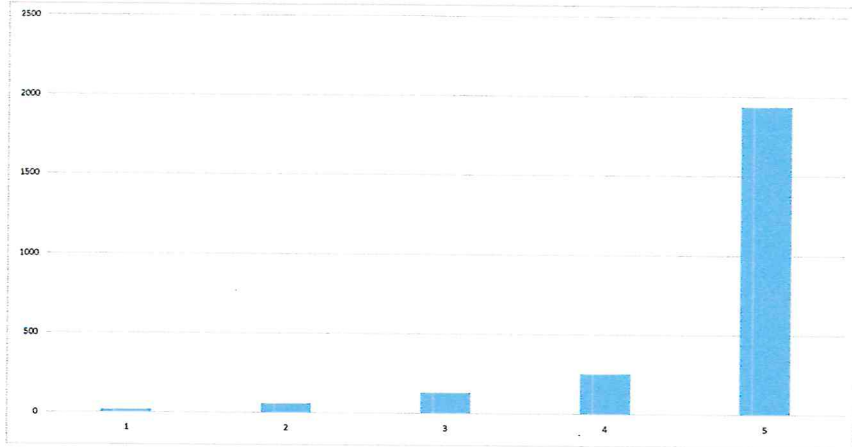
MAILAM ENGINEERING COLLEGE

(Approved by AICTE, New Delhi, Affiliated to Anna University Chennai
(Accredited by NBA, New Delhi & Accredited by TATA Consultancy Services TCS, Chennai)

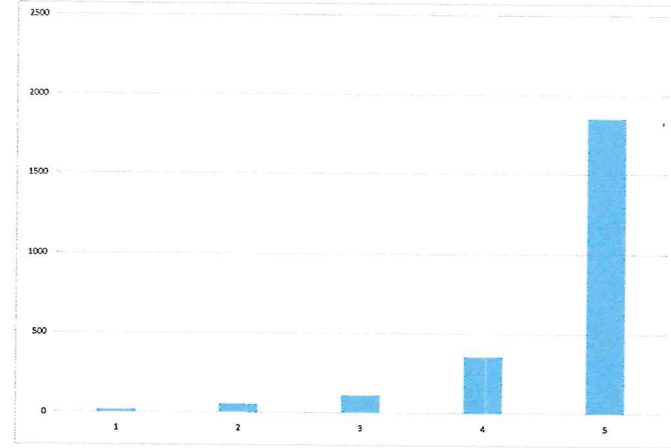
Students Feedback Analysis report - Academic year:2021-2022

OVERALL STUDENTS SURVEY ANALYSIS

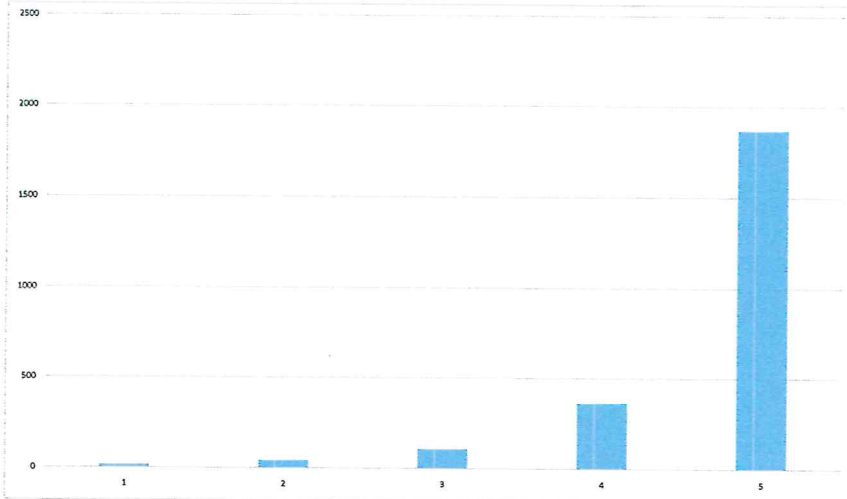
Quality of the teaching by the faculty members and support extended by them towards the overall development of the students.



The conduct of examinations and evaluation system (both internal and external exams) is effective and transparent.



The quality of the food and hygiene maintenance in the hostel mess and canteen/cafeteria.




IQAC Coordinator




Dr. R. RAJAPPAN, Ph.D.
Principal
Mailam Engineering College
Mailam - 604 304, Villupuram (Dt.)


Principal